

HUNGARY

Phone:+361 293 4459

HungaroControl Pte. Ltd. Co.

AIP SUP: 001/2024

AFS:LHBPYNYN

Hungarian Air Navigation Services

Effective Date: 04-FEB-2024

Email:pubsdo@hungarocontrol.hu Aeronautical Information Service

End Date: 31-MAR-2024

URL:www.hungarocontrol.hu

H-1675 Budapest, POB 80

Publication Date: 25-JAN-2024

Debrecen International Airport (LHDC) Demolition works

1. GENERAL

The Demolition of disused paved surfaces at LHDC:

- Demolition of disused RWY 04L/22R, TWY C, TWY D;
- Demolition of other disused paved surfaces;
- Transportation of demolition debris.

2. PERIOD OF DEMOLITION WORKS

The demolition project starts in Q2 2023 and the completion is scheduled for the Q1 2024. The works are phased and the relevant traffic and closure restrictions may be published by NOTAM.

3. PHASE A

Commence and actual finish of the phase will be notified by NOTAM.

No movement areas are involved in this phase.

3.1 TRAFFIC INFORMATION AND RESTRICTIONS

No traffic restrictions are expected at phase A.

4. PHASE B

Commence and actual finish of the phase will be notified by NOTAM.

Involved areas: TWY A, TWY B, APRON.

4.1 TRAFFIC INFORMATION AND RESTRICTIONS

Traffic and closure restrictions may be published by NOTAM.

5. PHASE C

Commence and actual finish of the phase will be notified by NOTAM.

Involved areas: RWY 04R/22L, TWY A.

5.1 TRAFFIC INFORMATION AND RESTRICTIONS

Traffic and closure restrictions may be published by NOTAM.

6. PHASE D

Commence and actual finish of the phase will be notified by NOTAM.

Involved areas: RWY 04R/22L, TWY A.

6.1 TRAFFIC INFORMATION AND RESTRICTIONS

Traffic and closure restrictions may be published by NOTAM.

7. PHASE E

Commence and actual finish of the phase will be notified by NOTAM.

Involved areas: RWY 04R/22L.

7.1 TRAFFIC INFORMATION AND RESTRICTIONS

Traffic and closure restrictions may be published by NOTAM.

8. REPLACED SUP

This SUP replaces the AIP SUP 004/2023.



Figure 1. Demolition works phase A

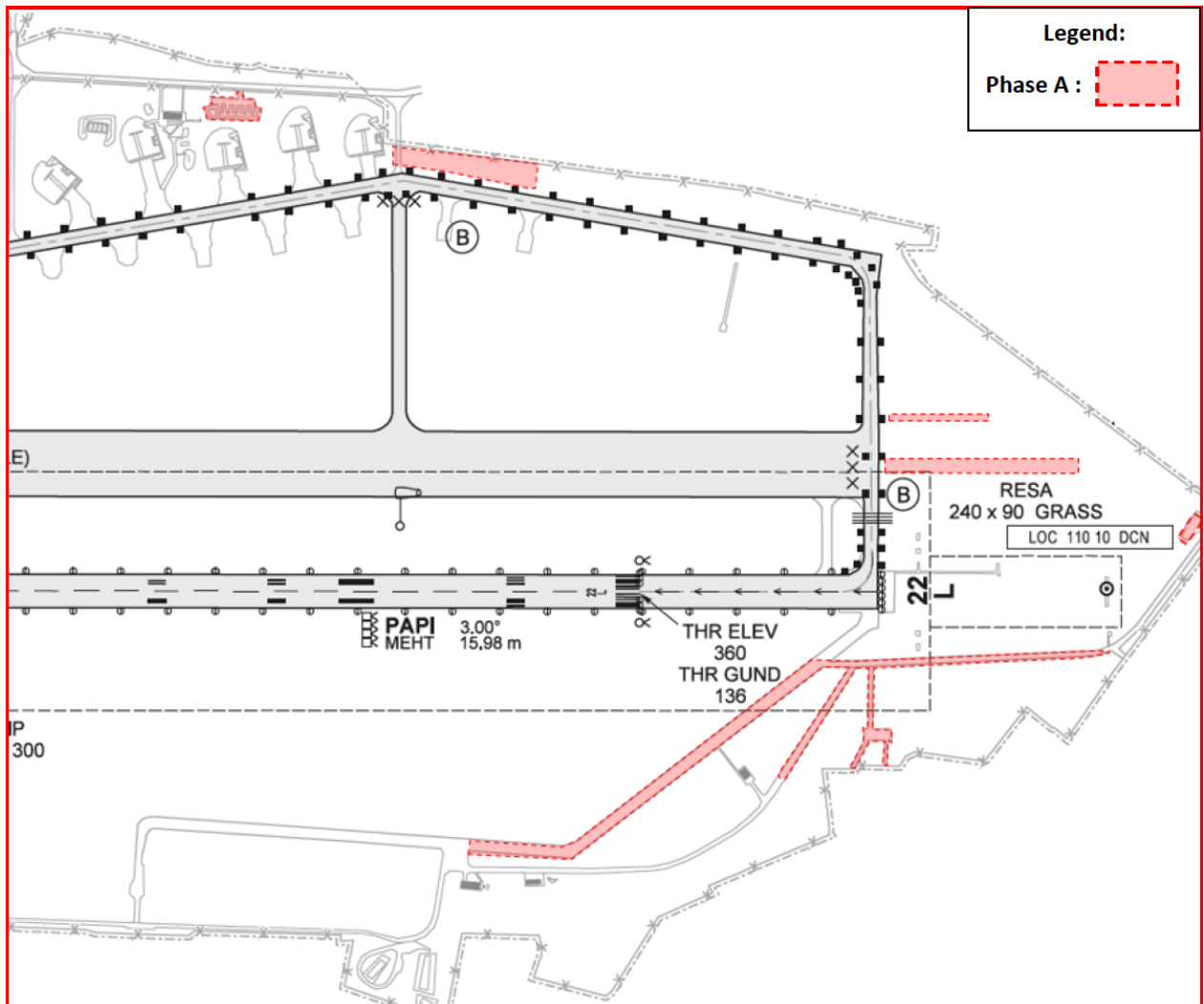


Figure 2. Demolition works phase B

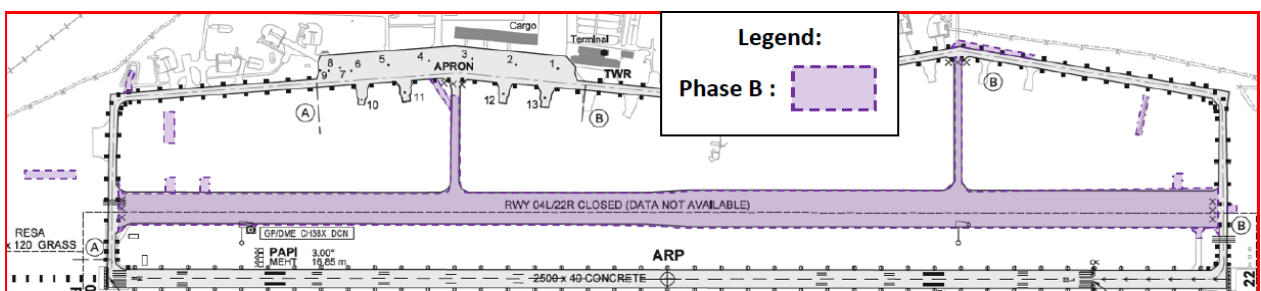


Figure 3. Demolition works phase C

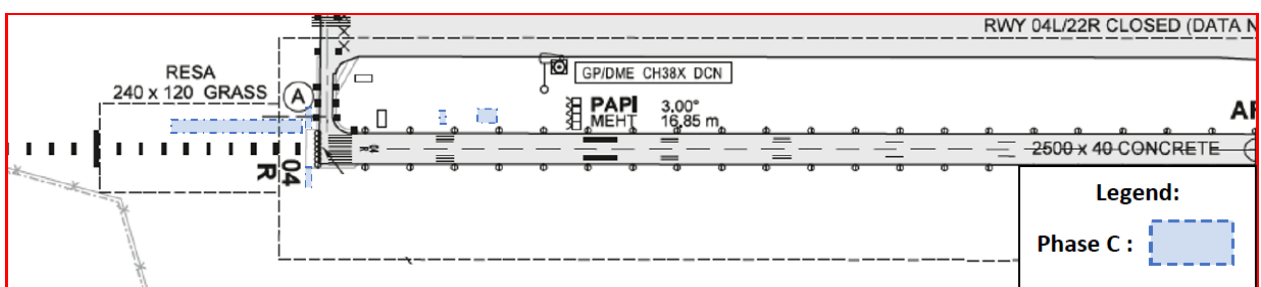


Figure 4. Demolition works phase D

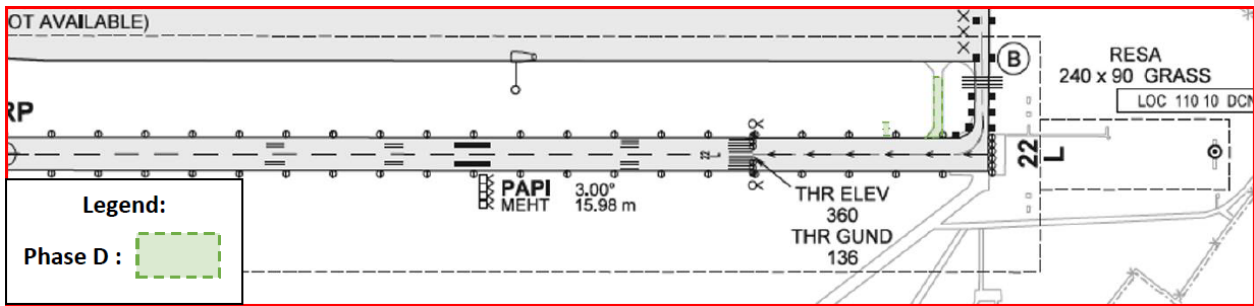


Figure 5. Demolition works phase E

