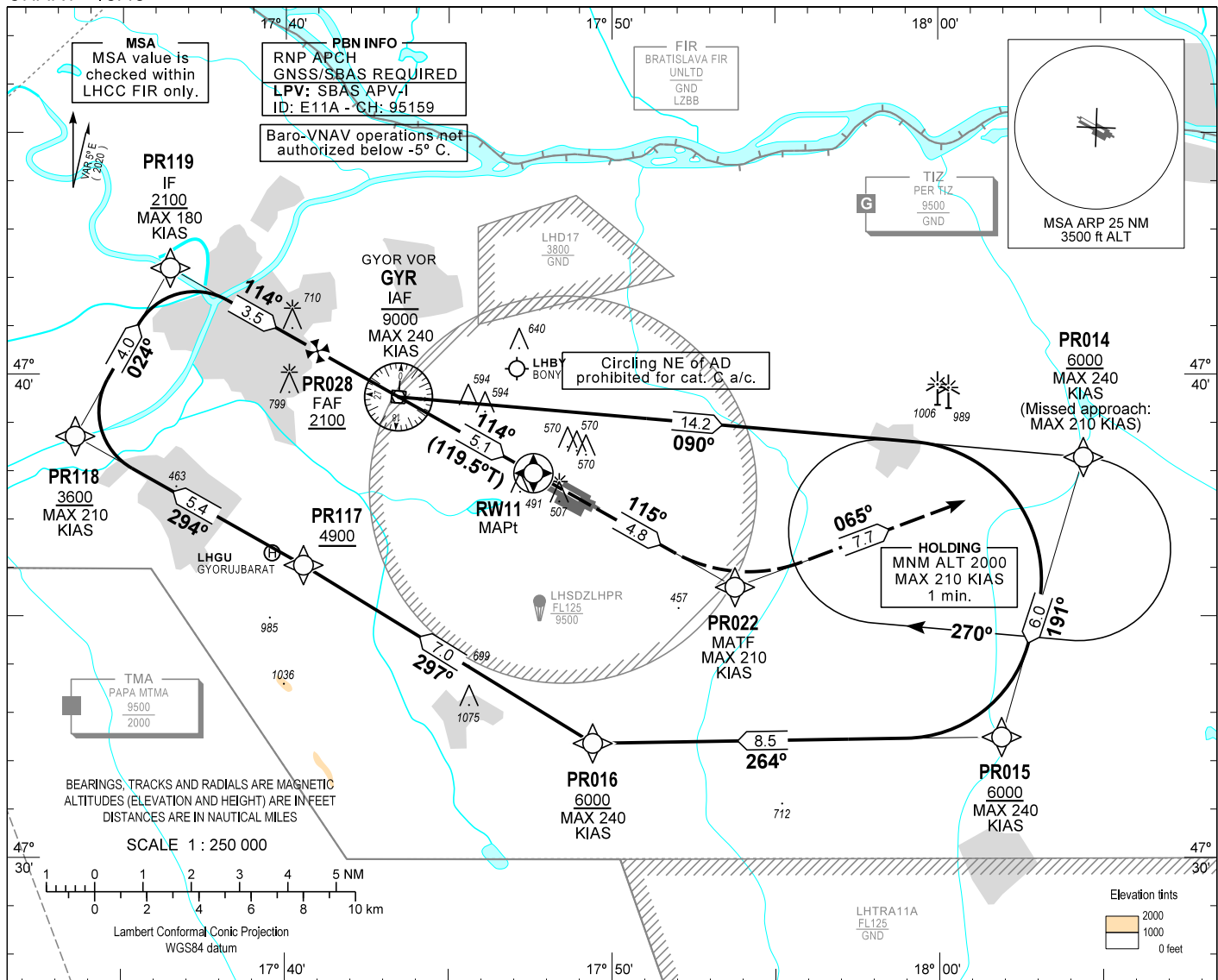


AIP HUNGARY

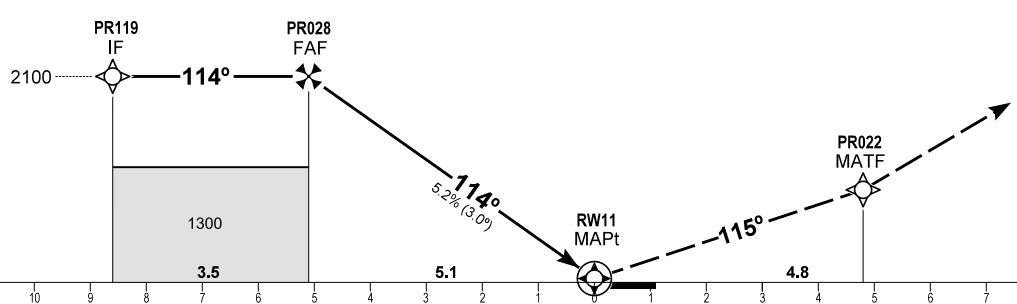
INSTRUMENT APPROACH CHART - ICAO  
AERODROME ELEV 426  
HEIGHTS RELATED TO THR RWY 11 - ELEV 415

PÉR INFORMATION 129.910  
BUDAPEST INFORMATION (WEST) 125.500

GYÖR/PÉR  
RNP RWY 11  
(ACFT CAT A, B, C)



TRANSITION ALTITUDE 10000  
MISSED APPROACH: Climb to PR022. Turn left to PR014 and enter holding at or above 2000. Maximum turning speed: 210 KIAS.



CHANGE: AFIS call sign changed

OCA (OCH)		A	B	C	DIST THR / RWY11				
					NM	5.0	4.0	3.0	2.0
STRAIGHT-IN APPROACH	LNAV	820 (410)			ALTITUDE				
	LNAV / VNAV	664 (249)	673 (258)	682 (267)	ft	2060	1740	1420	1100
	LPV	639 (224)	651 (236)	659 (244)	Timing not authorized to define the MAPt.				
CIRCLING APPROACH	ft AMSL	890	940	1180 <small>SW of AD only</small>	GROUND SPEED				
	VIS. m	1900	2800	3700	kt	60	90	120	150
					FAF - RWY11 5.1 NM				
					Rate of descent (319 ft/NM)				
					min:sec	5:06	3:24	2:33	2:03
					ft/min	320	480	640	800

### AD 2 LHPR INSTRUMENT APPROACH CHART RNP RWY 11

PT	WP ID	Role	OverFly	Bearing/ (Len Dur)	Turn Direction	Altitude (FT)	IAS (KT)	VRT ANG	NAV PERF
IF	GYR	IAF				-9000	-240		RNP APCH
TF	PR014			095.2 T/14.2 NM		+6000	-240		RNP APCH
TF	PR015			196.4 T/6.0 NM	R	+6000	-240		RNP APCH
TF	PR016			269.1 T/8.5 NM		+6000	-240		RNP APCH
TF	PR117			301.5 T/7.0 NM		+4900			RNP APCH
TF	PR118			299.3 T/5.4 NM		+3600	-210		RNP APCH
TF	PR119	IF		029.3 T/4.0 NM		+2100	-180		RNP APCH
TF	PR028	FAF		119.4 T/3.5 NM		+2100			RNP APCH
TF	RW11	MAPt	Y	119.5 T/5.1 NM		+465		-3.0°	RNP APCH
TF	PR022	MATF		119.5 T/4.8 NM			-210		RNP APCH
TF	PR014			069.7 T/7.7 NM	L	+2000	-210		RNP APCH
HM	PR014	MAHF		095.2 T/1 min	R	+2000	-210		RNP APCH

#### SBAS FAS Data Block Coding Data

FAS-DB (CRC wrapped data)	
Operation type	0
SBAS Provider	1
Airport identifier	LHPR
Runway	11
Approach Performance Designator	0
Route indicator	
Reference Path Data Selector	0
Reference Path Identifier	E11A
LTP/FTP Latitude	473758.3400N
LTP/FTP Longitude	0174735.6300E
LTP/FTP Ellipsoidal Height (m)	170.8
FPAP Latitude	473726.0200N
FPAP Longitude	0174900.3000E
Threshold Crossing Height	50
TCH Units Selector	0
Glidepath Angle (degrees)	3.00
Course Width (m)	105
Length Offset (m)	0
HAL (m)	40
VAL (m)	50
Data Block	10 12 10 08 0C 0B 00 00 01 31 31 05 88 1A 71 14 9C D2 A2 07 AC 1A 80 03 FF 7C 95 02 F4 01 2C 01 64 00 C8 FA EE 41 C1 02
Calculated CRC Value	EE41C102
FAS-DB (not CRC wrapped data)	
ICAO Code	LH
LTP/FTP Orthometric Height (m)	126.5

#### WAYPOINT COORDINATES

WP ID	Latitude	Longitude
GYR	N47 39 32.8	E017 43 27.7
PR014	N47 38 17.4	E018 04 25.7
PR015	N47 32 30.2	E018 01 54.4
PR016	N47 32 22.9	E017 49 24.5
PR117	N47 36 03.8	E017 40 33.6
PR118	N47 38 43.1	E017 33 33.9
PR119	N47 42 12.3	E017 36 27.7
PR028	N47 40 29.5	E017 40 58.7
RW11	N47 37 58.3	E017 47 35.6
PR022	N47 35 36.7	E017 53 45.6

#### Holding procedure

Holding fix: PR014  
 Right hand holding pattern.  
 Maximum speed: 210 KIAS  
 Inbound track: 090°  
 Outbound track: 270°  
 Rate of turn: 3°/sec. or 25° bank angle  
 (whichever requires lesser bank)  
 Outbound times: 1 min.  
 Minimum holding altitude: 2000  
 Maximum holding altitude: 8500  
 Entry: Sector 1 (parallel) and  
 Sector 2 (offset)  
 entries prohibited