

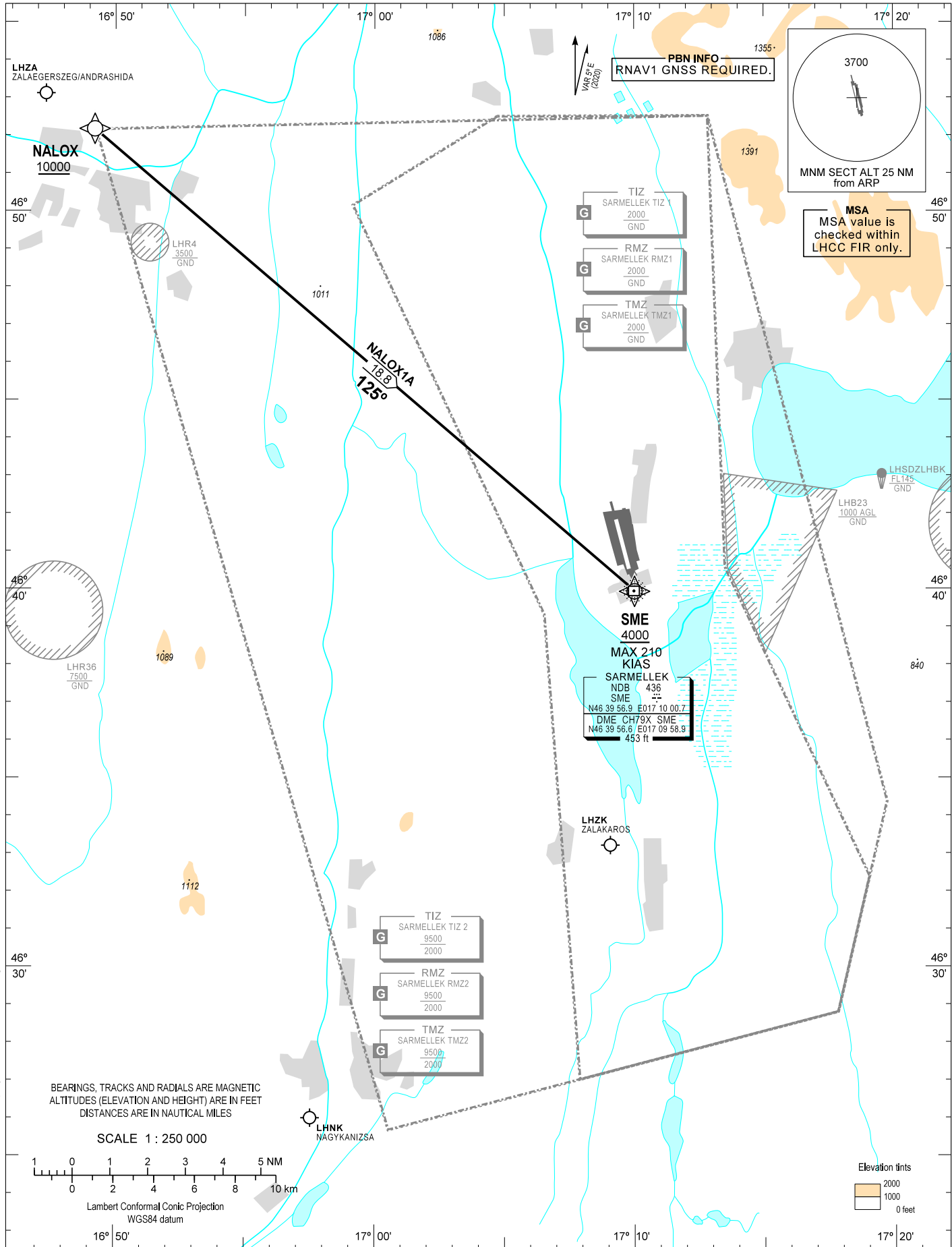
AIP HUNGARY

STANDARD ARRIVAL CHART -  
INSTRUMENT (STAR) -  
ICAO

TRANSITION ALTITUDE  
10000

BALATON INFO 134.585  
BUDAPEST INFORMATION (WEST) 125.500

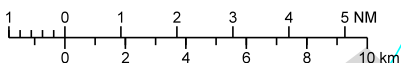
HÉVÍZ/BALATON  
RNAV RWY 16 / 34  
NALOX1A



CHANGE: display of the SME DME's longitude in DMS format

BEARINGS, TRACKS AND RADIALS ARE MAGNETIC  
ALTITUDES (ELEVATION AND HEIGHT) ARE IN FEET  
DISTANCES ARE IN NAUTICAL MILES

SCALE 1 : 250 000



Lambert Conformal Conic Projection  
WGS84 datum

Elevation tints  
2000  
1000  
0 feet

**AD 2 LHSM STANDARD ARRIVAL CHART INSTRUMENT RWY 16 / 34**

STAR NAME	PROCEDURE
<b>NALOX1A</b> (NALOX ONE ALPHA ARRIVAL)	From NALOX at or above 10000. To SME at or above 4000, maximum speed 210 KIAS.

**WAYPOINT COORDINATES**

WP ID	Latitude	Longitude
NALOX	N46 52 10.5	E016 49 12.3
SME	N46 39 56.9	E017 10 00.7