

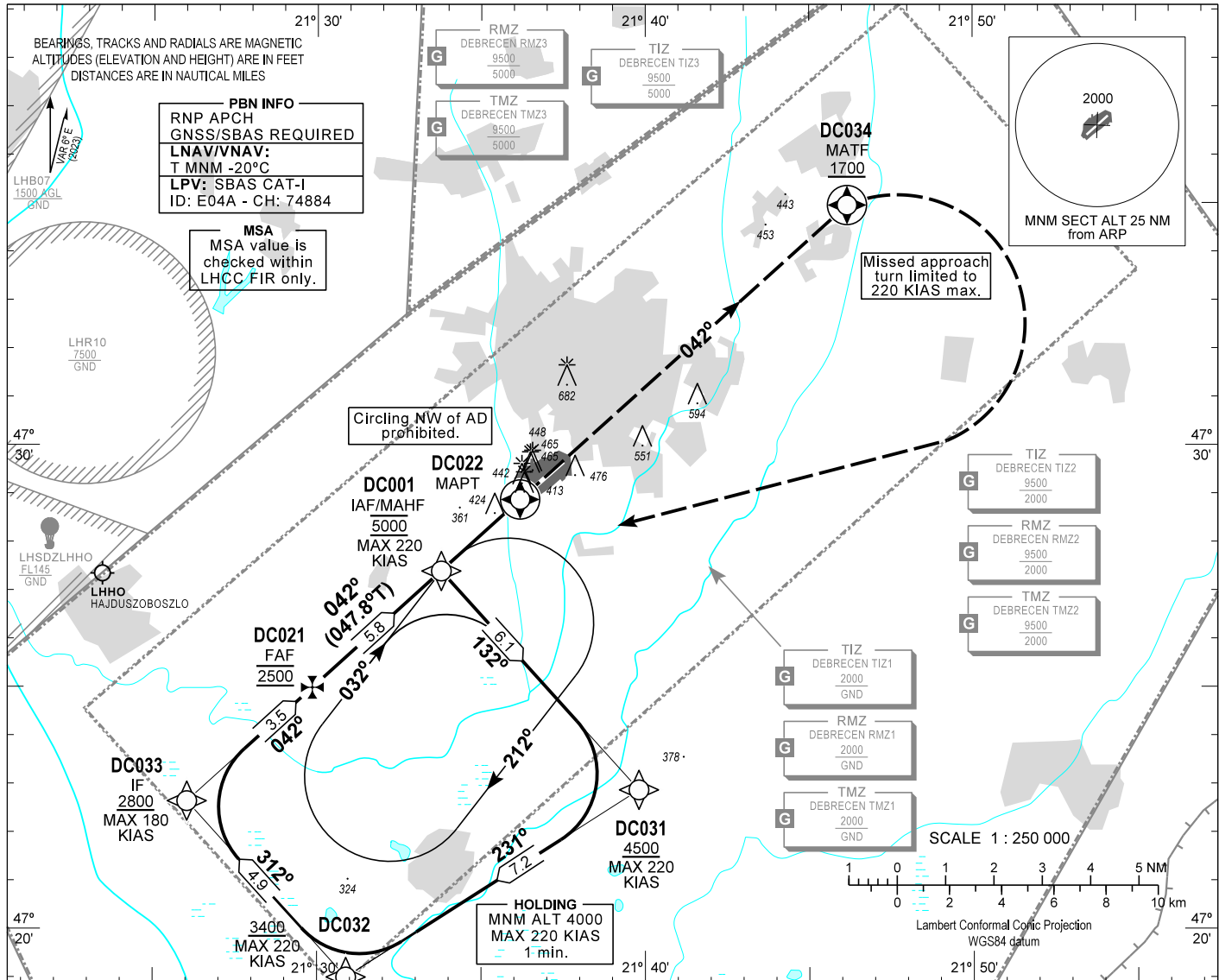
AIP HUNGARY

INSTRUMENT  
APPROACH  
CHART - ICAO

AERODROME ELEV 361  
HEIGHTS RELATED TO  
THR RWY 04R - ELEV 355

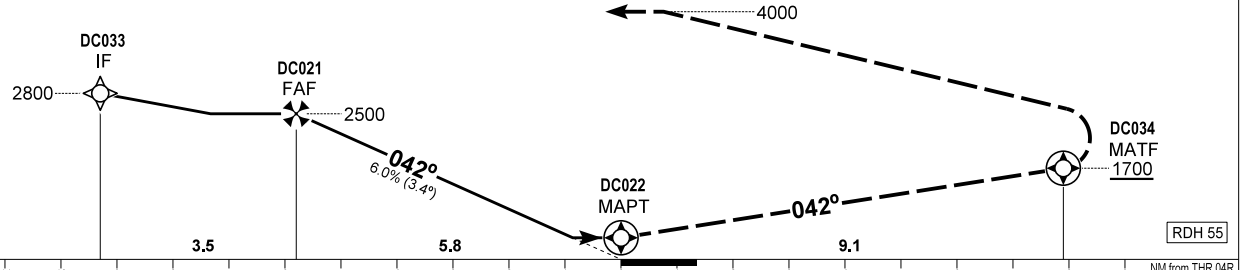
DEBRECEN INFO 125.910  
BUDAPEST INFORMATION (EAST) 133.000

DEBRECEN  
RNP RWY 04R  
(ACFT CAT A, B, C, D)



TRANSITION ALTITUDE  
10000

MISSED APPROACH  
Climbing straight ahead to 4000.  
Reach at least 1700 by DC034 and turn right direct DC001.  
Missed approach turn limited to 220 KIAS maximum.  
Proceed to DC001, and enter holding at 4000,  
or follow basic procedure according to ATC.



OCA (OCH)		A	B	C	D
STRAIGHT-IN APPROACH	LNAV	670 (310)	670 (310)	680 (320)	690 (330)
	LNAV/VNAV	578 (223)	591 (236)	625 (270)	636 (281)
	LPV	550 (195)	562 (207)	573 (218)	584 (229)
CIRCLING APPROACH SE of AD only	ft AMSL	850	860	990	1050
	VIS. m	1900	2800	3700	4600

DIST THR / RWY 04R	NM	5.0	4.0	3.0	2.0	1.0
ALTITUDE	ft	2230	1870	1500	1140	770
Timing not authorized to define the MAPT.						
GROUND SPEED	kt	60	90	120	150	180
FAWP - MAWP 5.79 NM	min:sec	5:48	3:51	2:54	2:19	1:56

CHANGE: chart symbols (RMZ, TMZ) updated, airspaces updated

## AD 2 LHDC INSTRUMENT APPROACH CHART RNP RWY 04R

Only aircraft, equipment and aircrew **approved by the State of the Operator** to carry out GNSS approaches, may use the procedure.

PT	WP ID	Role	OverFly	Bearing/ (Len Dur)	Turn Direction	Altitude (FT)	IAS (KT)	VRT ANG	NAV PERF
IF	DC001	IAF				@5000	-220		RNP APCH
TF	DC031			137.9 T/6.1 NM		+4500	-220		RNP APCH
TF	DC032			237.4 T/7.2 NM		+3400	-220		RNP APCH
TF	DC033	IF		317.9 T/4.9 NM		+2800	-180		RNP APCH
TF	DC021	FAF		047.8 T/3.5 NM		@2500			RNP APCH
TF	DC022	MAPT	Y	047.8 T/5.8 NM		+700		-3.4°	RNP APCH
TF	DC034	MATF	Y	047.9 T/9.1 NM		+1700	-220		RNP APCH
DF	DC001	MAHF			R	@4000	-220		RNP APCH
HM	DC001			038.0 T/1 min	R	@4000	-220		RNP APCH

### SBAS FAS Data Block Coding Data

#### FAS-DB (CRC wrapped data)

Operation type	0
SBAS Provider	1 (ENGOS)
Airport identifier	LHDC
Runway	04R
Approach Performance Designator	0
Route indicator	
Reference Path Data Selector	0
Reference Path Identifier	E04A
LTP/FTP Latitude	472853.0100N
LTP/FTP Longitude	0213610.8700E
LTP/FTP Ellipsoidal Height (m)	149.2
FPAP Latitude	472947.3095N
FPAP Longitude	0213739.4325E
Threshold Crossing Height	55
TCH Units Selector	0
Glidepath Angle (degrees)	3.40
Course Width (m)	105.00
Length Offset (m)	0
HAL (m)	40.0
VAL (m)	35.0
Data Block	10 03 04 08 0C 44 00 00 01 34 30 05 24 76 60 14 EC 60 45 09 D4 19 37 A8 01 E5 B3 02 26 02 54 01 64 00 C8 AF 58 36 6F 30
Calculated CRC Value	58366F30

#### FAS-DB (not CRC wrapped data)

ICAO Code	LH
LTP/FTP Orthometric Height (m)	108.2

### WAYPOINT COORDINATES

WP ID	Latitude	Longitude
DC001	N47 27 24.2	E021 33 46.9
DC031	N47 22 52.9	E021 39 48.3
DC032	N47 19 00.5	E021 30 53.1
DC033	N47 22 38.8	E021 26 02.3
DC021	N47 24 59.7	E021 29 51.3
DC022	N47 28 53.0	E021 36 10.9
DC034	N47 34 58.0	E021 46 09.8
DC001	N47 27 24.2	E021 33 46.9

#### Holding procedure

Holding fix: DC001  
 Right hand holding pattern.  
 Maximum speed: 220 KIAS  
 Inbound track: 032°  
 Outbound track: 212°  
 Rate of turn: 3°/sec. or 25° bank angle  
 (whichever requires lesser bank)  
 Outbound times: 1 min.  
 Minimum holding altitude: 5000  
 4000 for Missed Approach

Final approach descent: 3.40°