

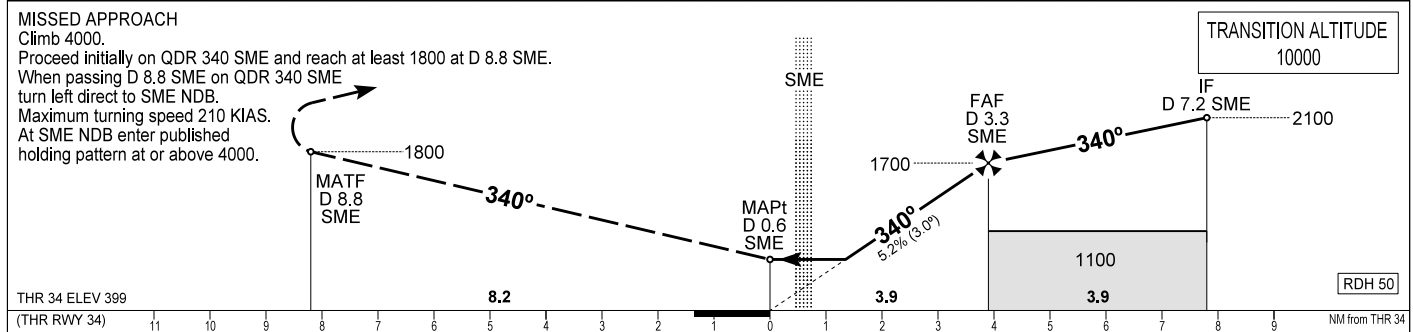
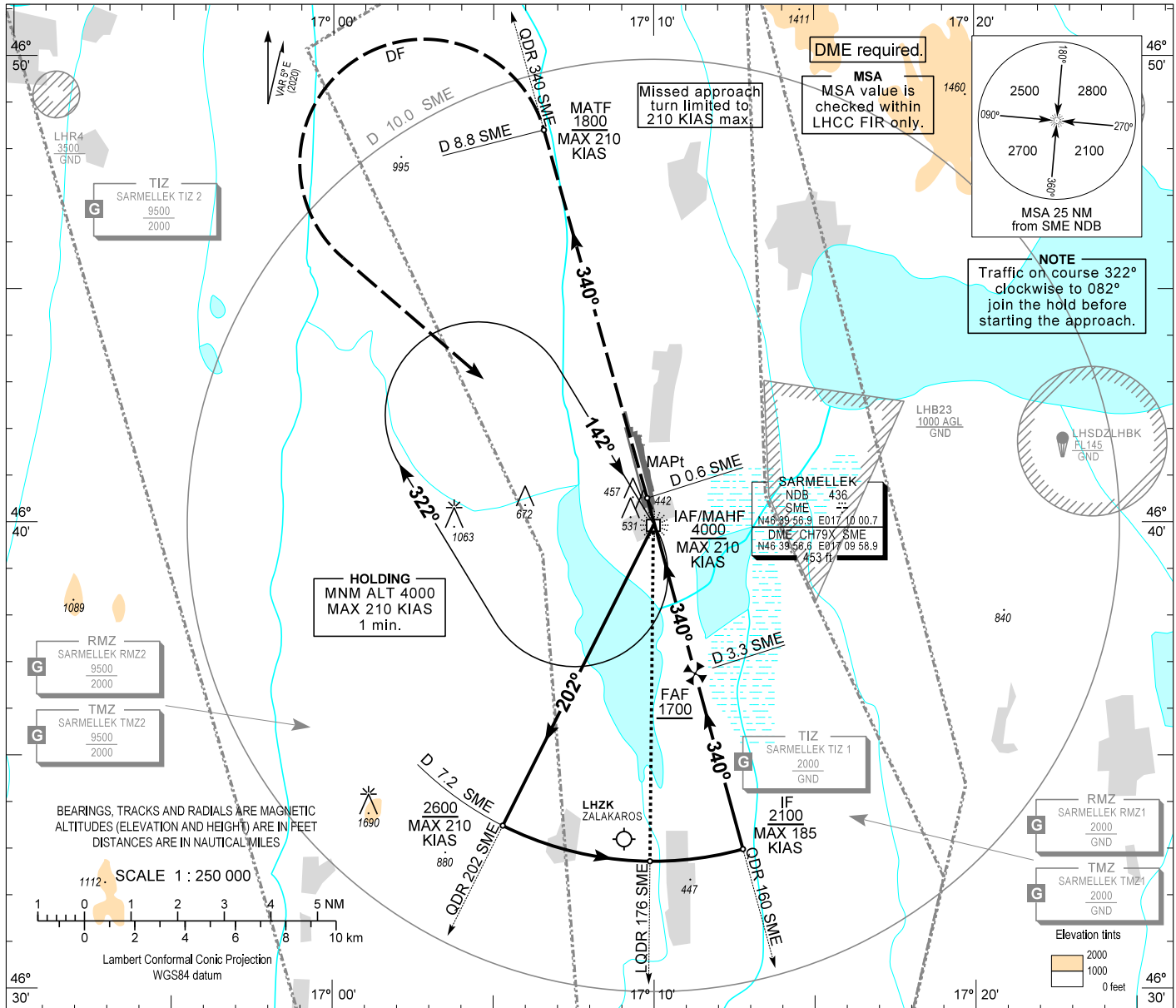
AIP HUNGARY

INSTRUMENT  
APPROACH  
CHART - ICAO

AERODROME ELEV 408  
HEIGHTS RELATED TO  
THR RWY 34 - ELEV 399

BALATON INFO 134.585  
BUDAPEST INFORMATION (WEST) 125.500

HÉVÍZ/BALATON  
NDB, RWY 34  
(ACFT CAT A, B, C, D)



OCA (OCH)					DIST THR / RWY 34					
	A	B	C	D	NM	3.9	3.0	2.0		
STRAIGHT-IN APPROACH	790 (400)				ft	1700	1400	1090		
CIRCLING APPROACH	ft AMSL	840	980	NOT AUTHORIZED	NOT AUTHORIZED					
	VIS. m	1900	2800							
Timing not authorized to define the MAPt.										
GROUND SPEED					kt	60	90	120	150	180
FAF - MAPt 3.9 NM					min:sec	3:54	2:36	1:57	1:34	1:18
Rate of descent (319 ft/NM)					ft/min	320	480	640	800	960

## AD 2 LHSM INSTRUMENT APPROACH CHART NDB RWY 34

### NDB approach procedure:

Initial altitude at or above 4000.  
Leave SME NDB on QDR 202 SME and descend 2600.  
At D 7.2 SME turn left and join CCW D 7.2 SME DME arc.  
After crossing LQDR 176 SME leading QDR turn left and intercept QDM 340 SME (final track), descend 1700.  
When crossing D 3.3 SME DME (FAF) descend to published minimum altitude.

### Holding procedure:

Holding fix: SME NDB.  
Right hand holding pattern.  
Maximum speed: 210 KIAS  
Inbound track: 142°  
Outbound track: 322°  
Rate of turn: 3°/sec. or 25° bank angle  
(whichever requires lesser bank)  
Outbound timing: 1 min  
Minimum holding altitude: 4000