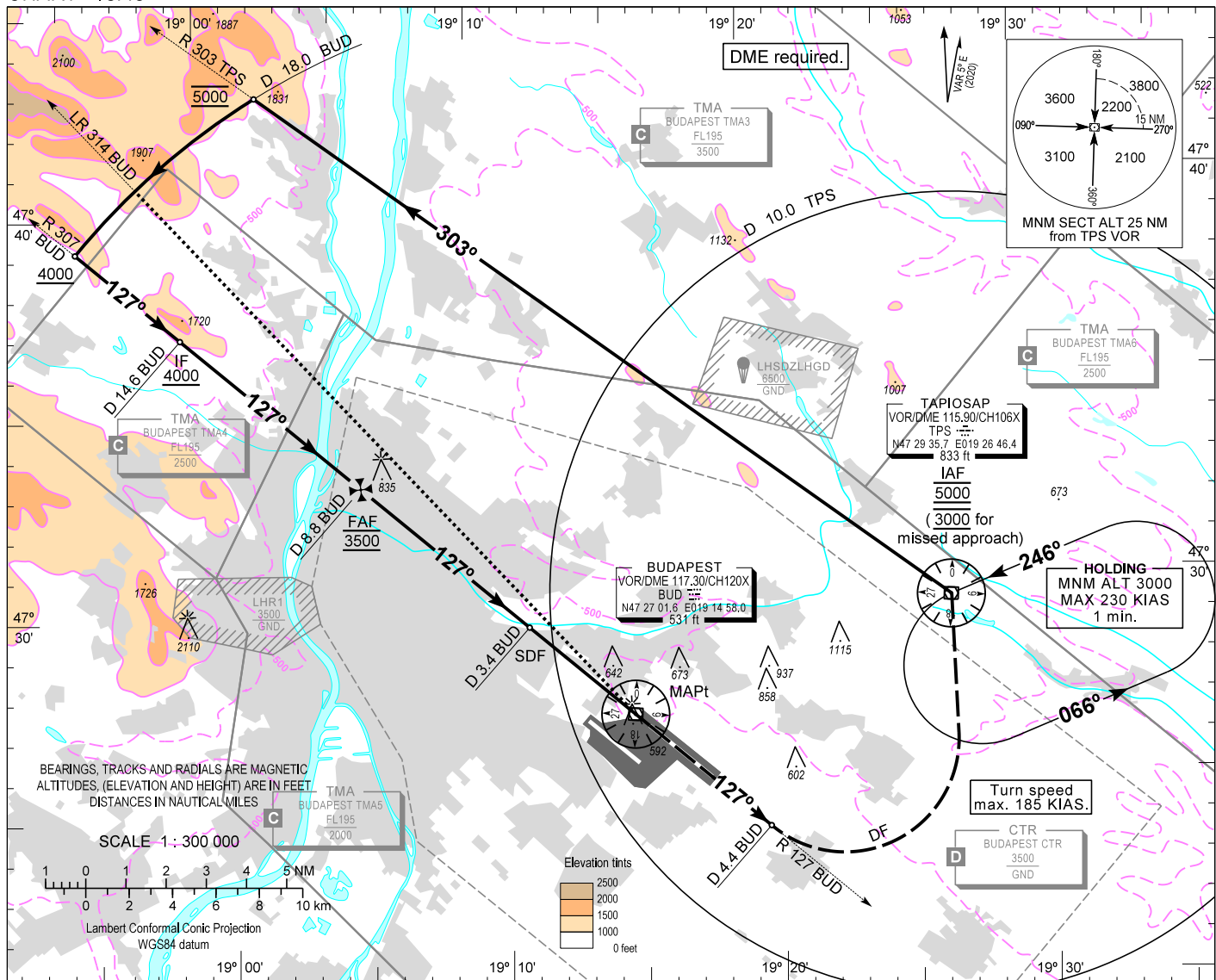


AIP HUNGARY

INSTRUMENT APPROACH CHART - ICAO  
AERODROME ELEV 496  
HEIGHTS RELATED TO THR RWY 13L - ELEV 496

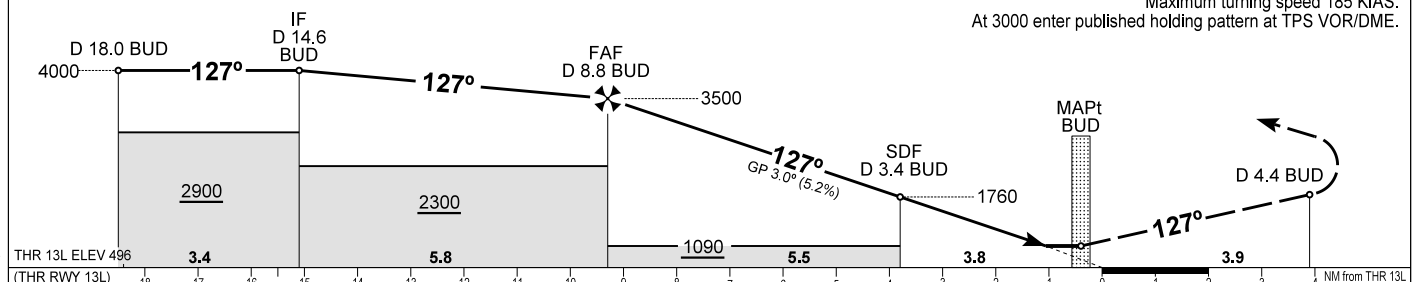
BUDAPEST APP 122.980 123.860  
BUDAPEST GROUND 121.905  
BUDAPEST DELIVERY 134.540  
BUDAPEST TOWER 118.715 ATIS 132.380 (117.300)  
BUDAPEST INFORMATION (NORTH) 119.350, (NORTH-EAST) 134.855

BUDAPEST/LISZT FERENC  
VOR RWY 13L  
(ACFT CAT A, B, C, D)



TRANSITION ALTITUDE  
10000

MISSED APPROACH  
Climb to 3000 and continue on R 127 BUD outbound.  
When passing D 4.4 BUD on R 127 BUD turn left direct to TPS VOR/DME.  
Maximum turning speed 185 KIAS.  
At 3000 enter published holding pattern at TPS VOR/DME.



OCA (H)	A	B	C	D
STRAIGHT-IN APPROACH	890 (400)			

DME BUD	NM	8.0	7.0	6.0	5.0	4.0	3.0	2.0	1.0
DIST THR / RWY 13L	NM	8.5	7.5	6.5	5.5	4.5	3.5	2.5	1.5
ALTITUDE	ft	3250	2930	2620	2300	1980	1660	1340	1020

Timing not authorized to define the MAPt.

GS	kt	60	90	120	150	180
FAF - THR 13L (9.3 NM)	min:sec	9:18	6:12	4:39	3:43	3:06
Rate of descent (319 ft/NM)	ft/min	320	480	640	800	960

CHANGE: radio communication frequenc

## AD 2 LHBP INSTRUMENT APPROACH CHART VOR RWY 13L

### VOR approach procedure:

Initial altitude: 5000.

Leave TPS on R 303 TPS and maintain 5000.

When reaching D 18.0 BUD turn left and join D 18.0 BUD DME arc CCW and descend 4000.  
After crossing R 314 BUD leading radial turn left and intercept R 307 BUD (final track) inbound.  
When crossing D 8.8 BUD at 3500, descend to published minimum altitude.