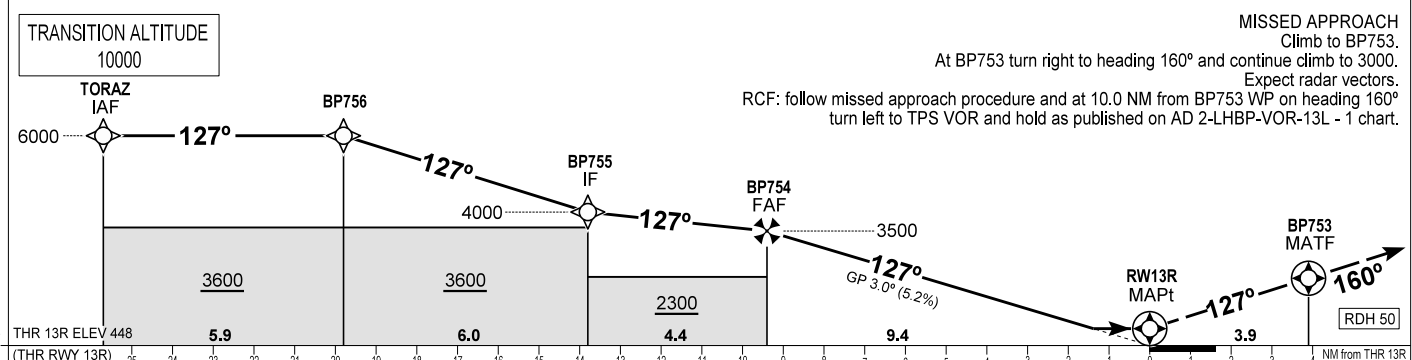
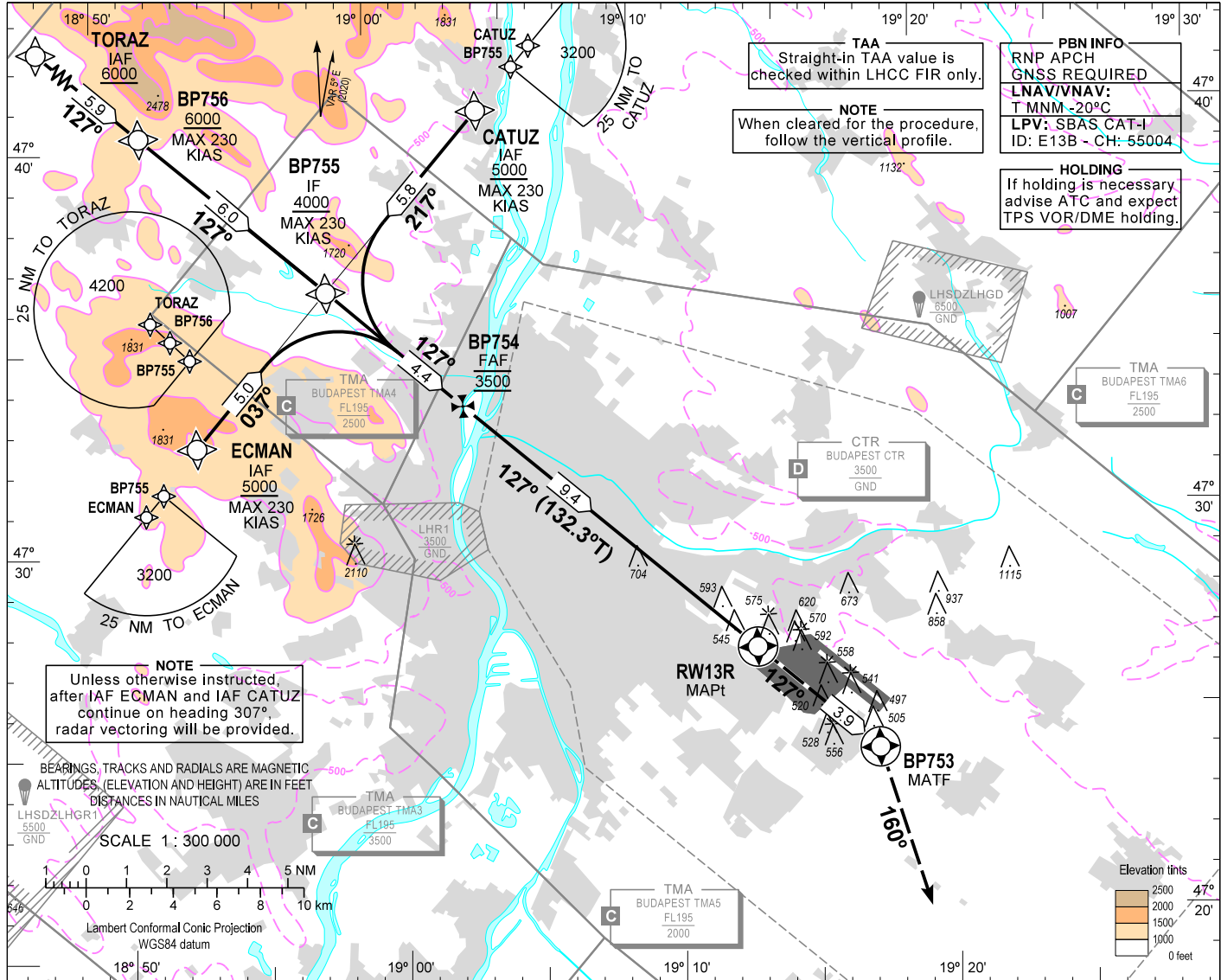


AIP HUNGARY

INSTRUMENT APPROACH CHART - ICAO
AERODROME ELEV 496
HEIGHTS RELATED TO THR RWY 13R - ELEV 448

BUDAPEST APP 122.980 123.860
BUDAPEST GROUND 121.905
BUDAPEST DELIVERY 134.540
BUDAPEST TOWER 118.715 ATIS 132.380 (117.300)
BUDAPEST INFORMATION (NORTH) 119.350, (NORTH-EAST) 134.855

BUDAPEST/LISZT FERENC
RNP RWY 13R
(ACFT CAT A, B, C, D)



TRANSITION ALTITUDE 10000		MISSED APPROACH Climb to BP753. At BP753 turn right to heading 160° and continue climb to 3000. Expect radar vectors. RCF: follow missed approach procedure and at 10.0 NM from BP753 WP on heading 160° turn left to TPS VOR and hold as published on AD 2-LHBP-VOR-13L - 1 chart.							
TORAZ IAF		BP756		BP755 IF		BP754 FAF		BP753 MATF	
6000		6000		4000		3500		3500	
127°		127°		127°		127°		127°	
3600		3600		2300		3500		RDH 50	
5.9		6.0		4.4		9.4		3.9	
THR 13R ELEV 448		THR RWY 13R		THR RWY 13R		THR RWY 13R		THR RWY 13R	
OCA (H)		A		B		C		D	
LNAV		960 (520)		960 (520)		960 (520)		960 (520)	
STRAIGHT-IN APPROACH		LNAV/VNAV		725 (277)		737 (289)		746 (298)	
		LPV		676 (228)		688 (240)		697 (249)	
				707 (259)					
DIST THR / RWY13L		NM		9.0		8.0		7.0	
				6.0		5.0		4.0	
				3.0		2.0			
ALTITUDE		ft		3360		3050		2730	
				2410		2090		1770	
				1450		1130			
Timing not authorized to define the MAPt.		GS		kt		60		90	
						120		150	
						180			
BP754 - RWY13R (9.4 NM)		min:sec		9:24		6:16		4:42	
				3:46		3:08			
Rate of descent (319 ft/NM)		ft/min		320		480		640	
				800		960			

CHANGE: raato communication frequencides

AD 2 LHBP INSTRUMENT APPROACH CHART RNP RWY 13R

via TORAZ

PT	WP ID	Role	OverFly	Bearing/ (Len Dur)	Turn Direction	Altitude (FT)	IAS (KT)	VRT ANG	NAV PERF
IF	TORAZ	IAF				+6000			RNP APCH
TF	BP756			131.7 T/5.9 NM		+6000	-230		RNP APCH
TF	BP755	IF		132.3 T/6.0 NM		+4000	-230		RNP APCH
TF	BP754	FAF		132.4 T/4.4 NM		@3500			RNP APCH
TF	RW13R	MAPt	Y	132.3 T/9.4 NM		+498		-3.0	RNP APCH
TF	BP753	MATF	Y	132.4 T/3.9 NM					RNP APCH
VM				165.0 T		@3000			

via CATUZ

PT	WP ID	Role	OverFly	Bearing/ (Len Dur)	Turn Direction	Altitude (FT)	IAS (KT)	VRT ANG	NAV PERF
IF	CATUZ	IAF				+5000	-230		RNP APCH
TF	BP755	IF		222.3 T/5.8 NM		+4000	-230		RNP APCH
TF	BP754	FAF		132.4 T/4.4 NM		@3500			RNP APCH
TF	RW13R	MAPt	Y	132.3 T/9.4 NM		+498		-3.0	RNP APCH
TF	BP753	MATF	Y	132.4 T/3.9 NM					RNP APCH
VM				165.0 T		@3000			

via ECMAN

PT	WP ID	Role	OverFly	Bearing/ (Len Dur)	Turn Direction	Altitude (FT)	IAS (KT)	VRT ANG	NAV PERF
IF	ECMAN	IAF				+5000	-230		RNP APCH
TF	BP755	IF		042.4 T/5.0 NM		+4000	-230		RNP APCH
TF	BP754	FAF		132.4 T/4.4 NM		@3500			RNP APCH
TF	RW13R	MAPt	Y	132.3 T/9.4 NM		+498		-3.0	RNP APCH
TF	BP753	MATF	Y	132.4 T/3.9 NM					RNP APCH
VM				165.0 T		@3000			

SBAS FAS Data Block Coding Data

WAYPOINT COORDINATES SEE: AD 2.22.

FAS-DB (CRC wrapped data)

Operation type	0
SBAS provider ID	1
Airport identifier	LHBP
RWY	13R
Approach performance designator	0
Route indicator	
Reference path data selector	0
Reference path identifier	E13B
LTP/FTP latitude	472655.3400N
LTP/FTP longitude	0191314.7300E
LTP/FTP ellipsoidal height (m)	180.6
FPAP latitude	472547.9550N
FPAP longitude	0191503.7180E
Threshold crossing height (TCH)	15
TCH units	1
Glide path angle (degrees)	3.00
Course width at threshold (m)	105.00
Length offset (m)	88
Horizontal alert limit (m)	40.0
Vertical alert limit (m)	35.0
Computed Data Block	10 10 02 08 0C 4D 00 00 02 33 31 05 D8 DE 5C 14 D4 A7 3F 08 0E 1B 8E F1 FD 78 53 03 2C 81 2C 01 64 0B C8 AF C3 C6 1F 72
Computed CRC	C3C61F72

FAS-DB (not CRC wrapped)

ICAO code	LH
LTP/FTP Orthometric height (m)	136.6