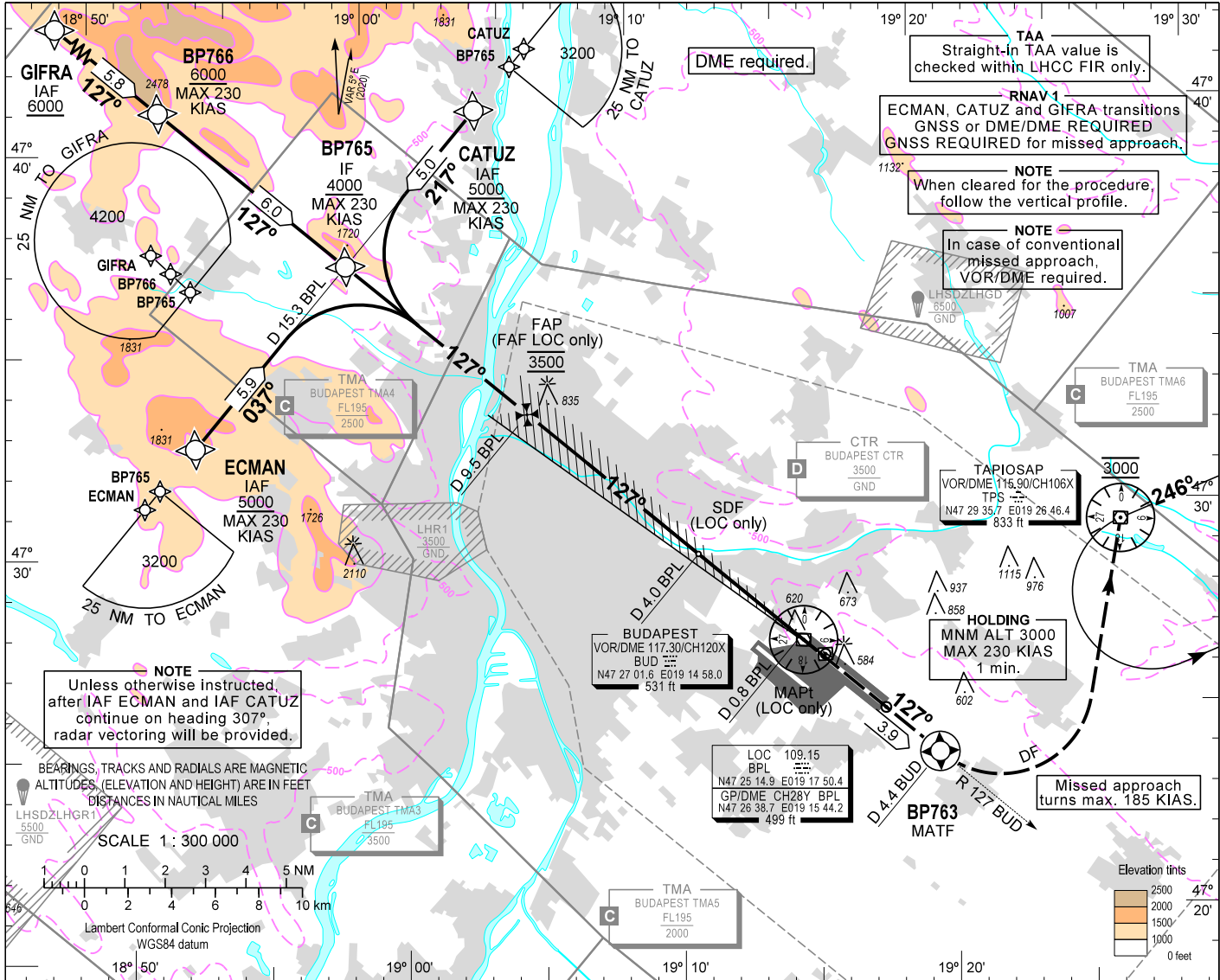


AIP HUNGARY

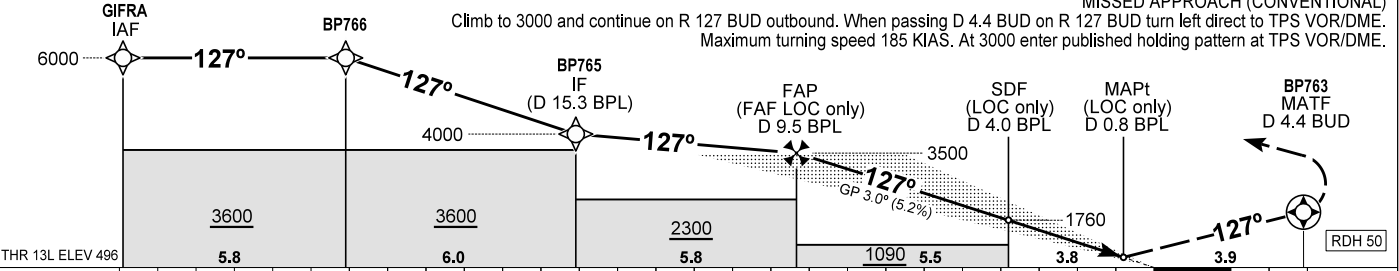
INSTRUMENT APPROACH CHART - ICAO  
AERODROME ELEV 496  
HEIGHTS RELATED TO THR RWY 13L - ELEV 496

BUDAPEST APP 122.980 123.860  
BUDAPEST GROUND 121.905  
BUDAPEST DELIVERY 134.540  
BUDAPEST TOWER 118.715 ATIS 132.380 (117.300)  
BUDAPEST INFORMATION (NORTH) 119.350, (NORTH-EAST) 134.855

BUDAPEST/LISZT FERENC  
ILS or LOC RWY 13L  
(ACFT CAT A, B, C, D)



TRANSITION ALTITUDE  
10000



MISSED APPROACH (RNAV)  
Climb to BP763. At BP763 turn left direct to TPS and continue climb to 3000.  
Maximum turning speed 185 KIAS. At 3000 enter published holding pattern at TPS VOR/DME.  
MISSED APPROACH (CONVENTIONAL)  
Climb to 3000 and continue on R 127 BUD outbound. When passing D 4.4 BUD on R 127 BUD turn left direct to TPS VOR/DME.  
Maximum turning speed 185 KIAS. At 3000 enter published holding pattern at TPS VOR/DME.

OCA (H)		A	B	C	D										
STRAIGHT-IN APPROACH	CAT I	662 (166)	674 (178)	682 (186)	693 (197)	DME BPL	NM	9.0	8.0	7.0	6.0	5.0	4.0	3.0	2.0
	CAT II	574 (78)	591 (95)	603 (107)	617 (121)	DIST THR / RWY 13L	NM	8.8	7.8	6.8	5.8	4.8	3.8	2.8	1.8
	LOC	870 (380)				ALTITUDE	ft	3350	3030	2710	2390	2070	1760	1440	1120
	Timing not authorized to define the MAPt.														
GS							kt	60	90	120	150	180			
FAP/FAF - THR 13L (9.3 NM)							min:sec	9:18	6:12	4:39	3:43	3:06			
Rate of descent (319 ft/NM)							ft/min	320	480	640	800	960			

CHANGE: radio communication frequencies

**AD 2 LHBP INSTRUMENT APPROACH CHART ILS OR LOC 13L**

via GIFRA

PT	WP ID	Role	OverFly	Bearing/ (Len Dur)	Turn Direction	Altitude (FT)	IAS (KT)	VRT ANG	NAV PERF
IF	GIFRA	IAF				+6000			RNAV1
TF	BP766			132.1 T/5.8 NM		+6000	-230		RNAV1
TF	BP765	IF		132.2 T/6.0 NM		+4000	-230		RNAV1
CF	BP764	FAF		132.2 T/5.8 NM		@3500			
CF	RW13L	LTP	Y	132.4 T/9.3 NM		+546		-3.0	
TF	BP763	MATF	Y	132.4 T/3.9 NM			-185		RNP APCH
DF	TPS				L	@3000	-185		RNP APCH
HM	TPS	MAHF		251.0 T/1 min	L	@3000	-230		RNP APCH

via ECMAN

PT	WP ID	Role	OverFly	Bearing/ (Len Dur)	Turn Direction	Altitude (FT)	IAS (KT)	VRT ANG	NAV PERF
IF	ECMAN	IAF				+5000	-230		RNAV1
TF	BP765	IF		042.3 T/5.9 NM		+4000	-230		RNAV1
CF	BP764	FAF		132.2 T/5.8 NM		@3500			
CF	RW13L	LTP	Y	132.4 T/9.3 NM		+546		-3.0	
TF	BP763	MATF	Y	132.4 T/3.9 NM			-185		RNP APCH
DF	TPS				L	@3000	-185		RNP APCH
HM	TPS	MAHF		251.0 T/1 min	L	@3000	-230		RNP APCH

via CATUZ

PT	WP ID	Role	OverFly	Bearing/ (Len Dur)	Turn Direction	Altitude (FT)	IAS (KT)	VRT ANG	NAV PERF
IF	CATUZ	IAF				+5000	-230		RNAV1
TF	BP765	IF		222.3T/5.0 NM		+4000	-230		RNAV1
CF	BP764	FAF		132.2 T/5.8 NM		@3500			
CF	RW13L	LTP	Y	132.4 T/9.3 NM		+546		-3.0	
TF	BP763	MATF	Y	132.4 T/3.9 NM			-185		RNP APCH
DF	TPS				L	@3000	-185		RNP APCH
HM	TPS	MAHF		251.0 T/1 min	L	@3000	-230		RNP APCH

WAYPOINT COORDINATES SEE: AD 2.22.