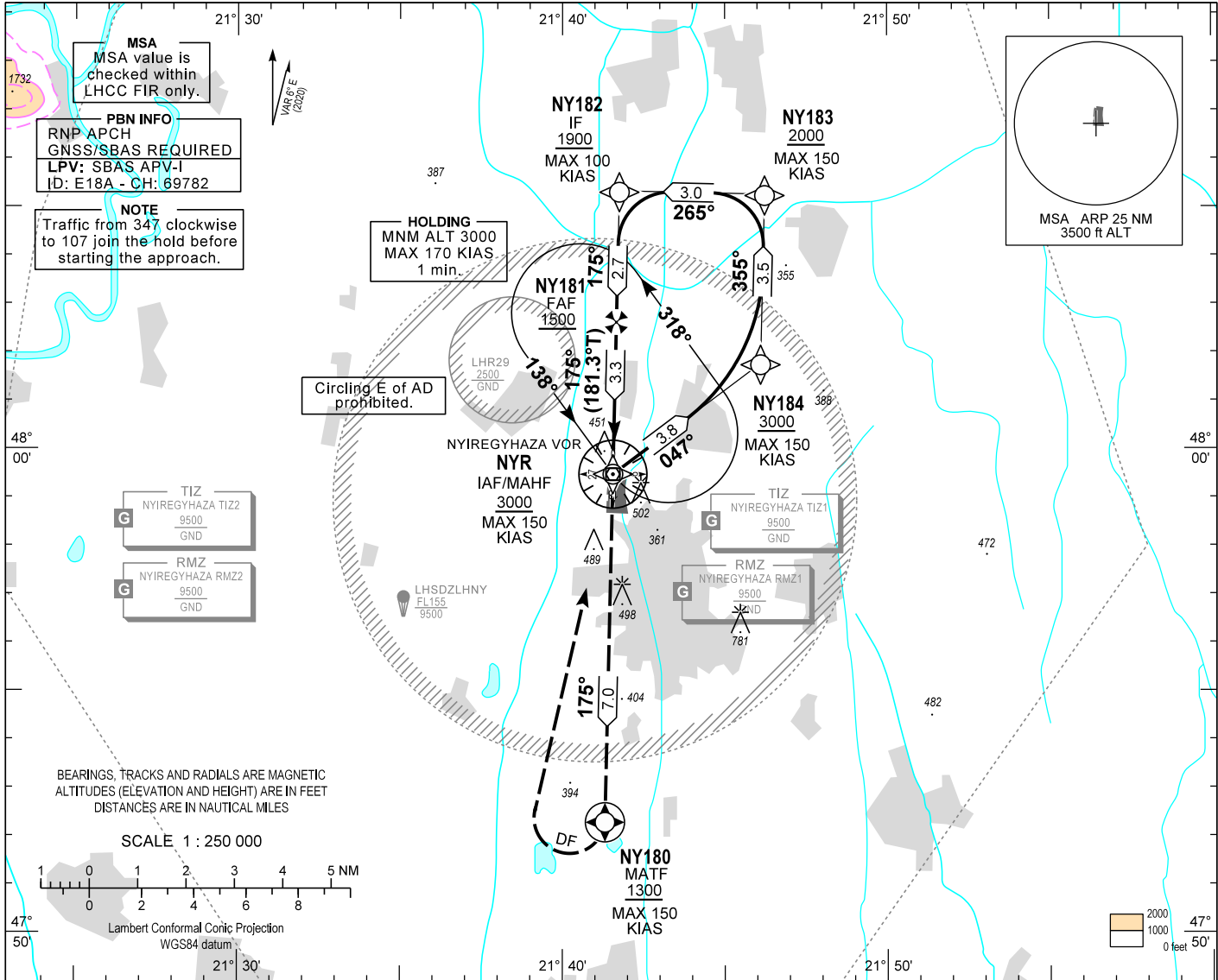


AIP HUNGARY

INSTRUMENT APPROACH CHART - ICAO
AERODROME ELEV 338
HEIGHTS RELATED TO THR RWY 18 - ELEV 338

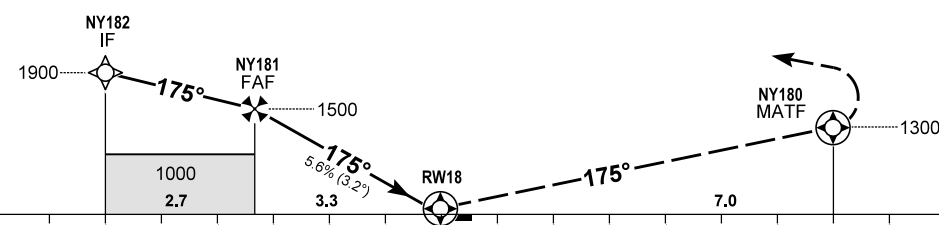
NYIREGYHÁZA INFO 119.410
BUDAPEST INFORMATION (EAST) 133.000

NYIREGYHÁZA
RNP Z RWY 18 (LPV only)
(ACFT CAT A)



TRANSITION ALTITUDE
10000

MISSED APPROACH
Climb to NY180 at or above 1300.
Turn right direct to NYR and enter holding at or above 3000.
Maximum turning speed: 150 KIAS.



THR 18 ELEV 338 (THR RWY 18) 10 9 8 7 6 5 4 3 2 1 0 1 2 3 4 5 6 7 8 9 10 NM from THR 18

OCA (OCH)		A		DIST THR / RW18			NM	3.0	2.0	1.0
STRAIGHT-IN APPROACH		LPV	591 (253)	ALTITUDE			ft	1400	1060	720
CIRCLING APPROACH W of AD only		ft AMSL	800	GROUND SPEED			kt	60	80	100
		VIS. m	1900	FAF - RW18 3.3 NM			min:sec	3:18	2:29	1:59
				Rate of descent (340 ft/NM)			ft/min	340	450	570

CHANGE: new chart

AD 2 LHNY INSTRUMENT APPROACH CHART RNP Z RWY 18

PT	WP ID	Role	OverFly	Bearing/ (Len Dur)	Turn Direction	Altitude (FT)	IAS (KT)	VRT ANG	NAV PERF
IF	NYR	IAF				+3000	-150		RNP APCH
TF	NY184			053.1 T/3.8 NM		+3000	-150		RNP APCH
TF	NY183			001.4 T/3.5 NM		+2000	-150		RNP APCH
TF	NY182	IF		271.4 T/3.0 NM		+1900	-100		RNP APCH
TF	NY181	FAF		181.3 T/2.7 NM		+1500			RNP APCH
TF	RW18	LTP	Y	181.3 T/3.3 NM		+378		-3.2°	RNP APCH
TF	NY180	MATF	Y	181.3 T/7.0 NM		+1300	-150		RNP APCH
DF	NYR				R	+3000	-150		RNP APCH
HM	NYR	MAHF		144.0 T/1 min	L	+3000	-170		RNP APCH

SBAS FAS Data Block Coding Data

FAS-DB (CRC wrapped data)

Operation type	0
SBAS Provider	1
Airport identifier	LHNY
Runway	18
Approach Performance Designator	0
Route indicator	Z
Reference Path Data Selector	0
Reference Path Identifier	E18A
LTP/FTP Latitude	475918.6500N
LTP/FTP Longitude	0214132.8800E
LTP/FTP Ellipsoidal Height (m)	143.3
FPAP Latitude	475823.7855N
FPAP Longitude	0214131.0025E
Threshold Crossing Height	40
TCH Units Selector	0
Glidepath Angle (degrees)	3.20
Course Width (m)	105.00
Length Offset (m)	696
HAL (m)	40.0
VAL (m)	50.0
Data Block	10 19 0E 08 0C 12 D0 00 01 38 31 05 F4 2C 98 14 A0 34 4F 09 99 19 5F 53 FE 55 F1 FF 90 01 40 01 64 57 C8 FA 27 24 AE 08
Calculated CRC Value	2724AE08

FAS-DB (not CRC wrapped data)

ICAO Code	LH
LTP/FTP Orthometric Height (m)	103.0

WAYPOINT COORDINATES

WP ID	Latitude	Longitude
NYR	N47 59 28.3	E021 41 33.2
NY184	N48 01 45.7	E021 46 06.2
NY183	N48 05 15.5	E021 46 13.7
NY182	N48 05 19.7	E021 41 45.3
NY181	N48 02 36.7	E021 41 39.7
RW18	N47 59 18.7	E021 41 32.9
NY180	N47 52 16.6	E021 41 18.5

Holding procedure

Holding fix: NYR
 Left hand holding pattern.
 Maximum speed: 170 KIAS
 Inbound track: 138°
 Outbound track: 318°
 Rate of turn: 3°/sec. or 25° bank angle
 (whichever requires lesser bank)
 Outbound times: 1 min.
 Minimum holding altitude: 3000