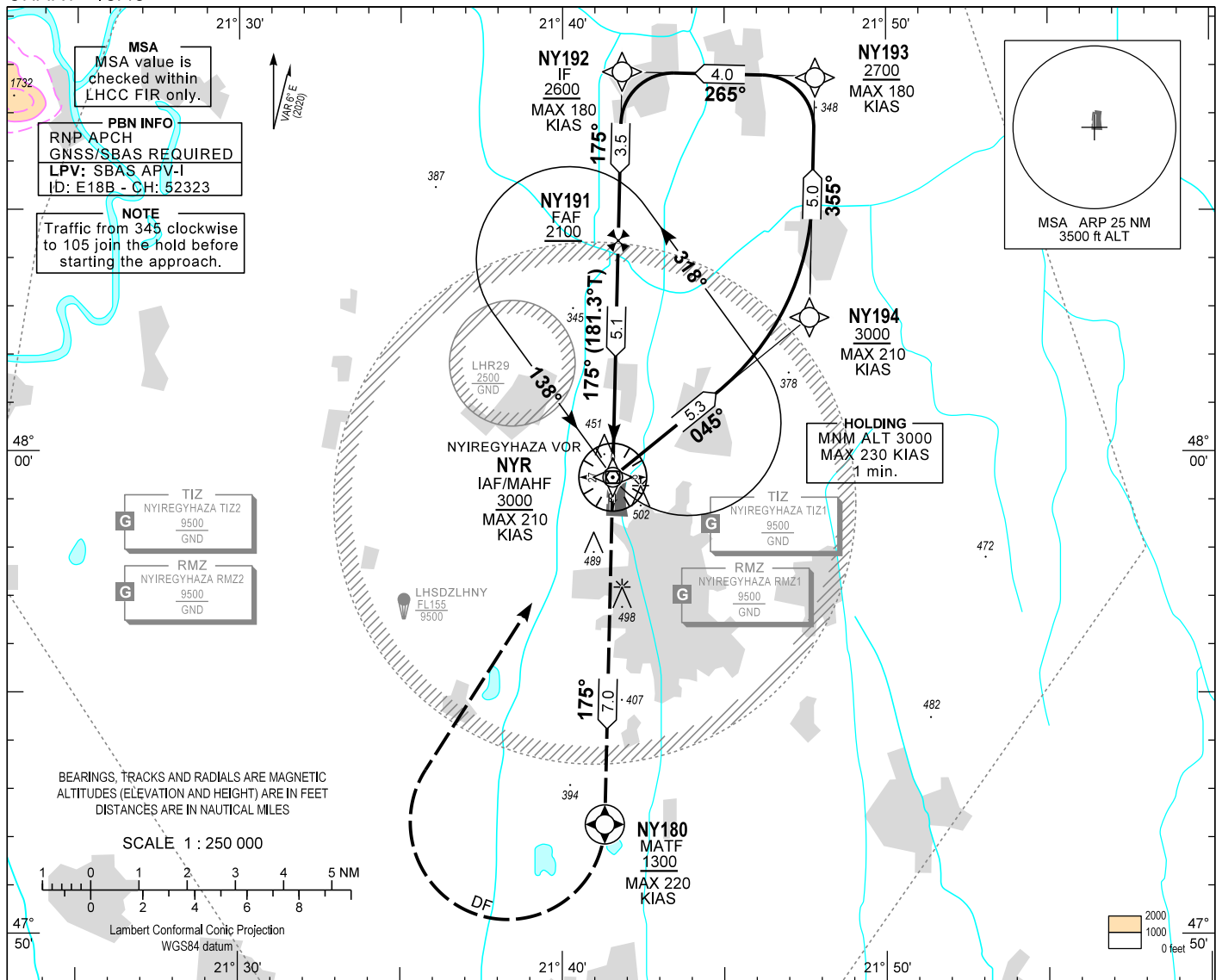


AIP HUNGARY

INSTRUMENT APPROACH CHART - ICAO  
AERODROME ELEV 338  
HEIGHTS RELATED TO THR RWY 18 - ELEV 338

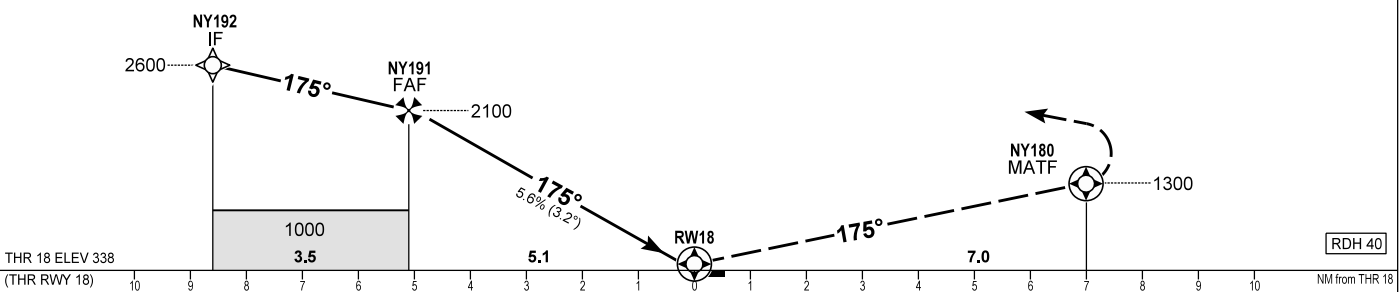
NYIREGYHÁZA INFO 119.410  
BUDAPEST INFORMATION (EAST) 133.000

NYIREGYHÁZA  
RNP Y RWY 18 (LPV only)  
(ACFT CAT B, C)



TRANSITION ALTITUDE  
10000

MISSED APPROACH  
Climb to NY180 at or above 1300.  
Turn right direct to NYR and enter holding at or above 3000.  
Maximum turning speed: 220 KIAS.



OCA (OCH)		B	C	DIST THR / RW18	NM	5.0	4.0	3.0	2.0	1.0
STRAIGHT-IN APPROACH	LPV	606 (268)	615 (277)	ALTITUDE	ft	2080	1740	1400	1060	720

GROUND SPEED	kt	60	90	120	150	180
FAF - RW18 5.1 NM	min:sec	5:04	3:23	2:32	2:02	1:41
Rate of descent (340 ft/NM)	ft/min	340	510	680	850	1020

CHANGE: new chart

**AD 2 LHNY INSTRUMENT APPROACH CHART RNP Y RWY 18**

PT	WP ID	Role	OverFly	Bearing/ (Len Dur)	Turn Direction	Altitude (FT)	IAS (KT)	VRT ANG	NAV PERF
IF	NYR	IAF				+3000	-210		RNP APCH
TF	NY194			051.0 T/5.3 NM		+3000	-210		RNP APCH
TF	NY193			001.4 T/5.0 NM		+2700	-180		RNP APCH
TF	NY192	IF		271.4 T/4.0 NM		+2600	-180		RNP APCH
TF	NY191	FAF		181.3 T/3.5 NM		+2100			RNP APCH
TF	RW18	LTP	Y	181.3 T/5.1 NM		+378		-3.2°	RNP APCH
TF	NY180	MATF	Y	181.3 T/7.0 NM		+1300	-220		RNP APCH
DF	NYR				R	+3000	-220		RNP APCH
HM	NYR	MAHF		144.0 T/ 1 min	L	+3000	-230		RNP APCH

**SBAS FAS Data Block Coding Data**

**FAS-DB (CRC wrapped data)**

Operation type	0
SBAS Provider	1
Airport identifier	LHNY
Runway	18
Approach Performance Designator	0
Route indicator	Y
Reference Path Data Selector	0
Reference Path Identifier	E18B
LTP/FTP Latitude	475918.6500N
LTP/FTP Longitude	0214132.8800E
LTP/FTP Ellipsoidal Height (m)	143.3
FPAP Latitude	475823.7855N
FPAP Longitude	0214131.0025E
Threshold Crossing Height	40
TCH Units Selector	0
Glidepath Angle (degrees)	3.20
Course Width (m)	105.00
Length Offset (m)	696
HAL (m)	40.0
VAL (m)	50.0
Data Block	10 19 0E 08 0C 12 C8 00 02 38 31 05 F4 2C 98 14 A0 34 4F 09 99 19 5F 53 FE 55 F1 FF 90 01 40 01 64 57 C8 FA 7F 14 12 4F
Calculated CRC Value	7F14124F
<b>FAS-DB (not CRC wrapped data)</b>	
ICAO Code	LH
LTP/FTP Orthometric Height (m)	103.0

**WAYPOINT COORDINATES**

WP ID	Latitude	Longitude
NYR	N47 59 28.3	E021 41 33.2
NY194	N48 02 46.9	E021 47 37.8
NY193	N48 07 46.7	E021 47 48.7
NY192	N48 07 52.3	E021 41 50.5
NY191	N48 04 22.5	E021 41 43.3
RW18	N47 59 18.7	E021 41 32.9
NY180	N47 52 16.6	E021 41 18.5

**Holding procedure**

Holding fix: NYR  
 Left hand holding pattern.  
 Maximum speed: 230 KIAS  
 Inbound track: 138°  
 Outbound track: 318°  
 Rate of turn: 3°/sec. or 25° bank angle  
 (whichever requires lesser bank)  
 Outbound times: 1 min.  
 Minimum holding altitude: 3000