

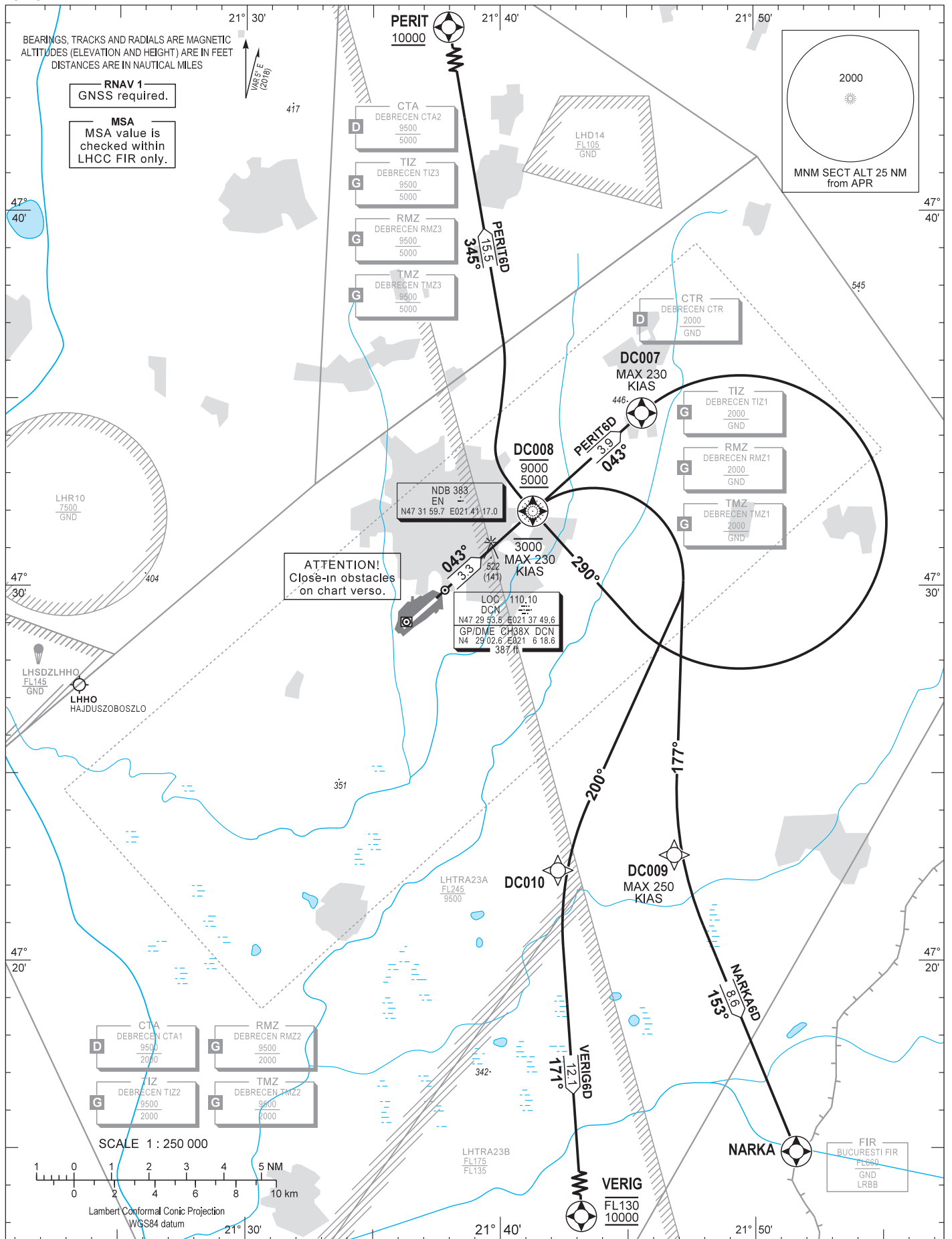
AIP HUNGARY

STANDARD DEPARTURE CHART -  
INSTRUMENT (SID) -  
ICAO

TRANSITION ALTITUDE  
10000

DEBRECEN TOWER 125.910  
DEBRECEN INFO 125.910  
BUDAPEST INFORMATION (EAST) 133.000

DEBRECEN  
RNAV RWY 04R  
NARKA6D PERIT6D VERIG6D



CHANGE: separation of RTMZ into RMZ and TMZ

AD 2 LHDC STANDARD DEPARTURE CHART INSTRUMENT RWY 04R

NAME	PROCEDURE	ALTIMETER SETTING	CLIMBING	R/T FAILURE
<b>PERIT6D</b>	To <u>DC008</u> climb on course 043°, at or below 3000. To <u>DC007</u> on course 043°, maximum speed 230 KIAS. Turn right direct to <u>DC008</u> , between 5000 and 9000. To <u>PERIT</u> at or above 10000. In order to reach exit altitude and avoid LHD14 min. PDG 5.9% up to FL110.	When passing 9000 change altimeter setting for Budapest QNH provided by DEBRECEN TWR/INFO or BUDAPEST INFORMATION.	After departure climb initially 10000. Further climb only by ATC.	If a departing controlled aircraft having acknowledged an initial or intermediate clearance to climb to a level other than the one specified in the filed FPL for the en-route phase and no time or geographical limit was included in the clearance, should climb and maintain the level to which it was cleared for 7 minutes and then should climb to the level included in the filed FPL unless the cruising level was definitely specified in the en-route clearance. If the last acknowledged clearance includes lower altitude than 10000 without time or geographical limit then the aircraft should climb and maintain 10000 for 7 min. and then climb to the appropriate cruising level as above.
<b>NARKA6D</b>	To <u>DC008</u> climb on course 043°, at or below 3000, maximum speed 230 KIAS. Turn right direct to DC009, maximum speed 250 KIAS. To <u>NARKA</u> . In order to reach exit altitude min. PDG 7.4% up to 10000. In order to avoid obstacles min. PDG 3.3% up to 10000.			
<b>VERIG6D</b>	To <u>DC008</u> climb on course 043°, at or below 3000, maximum speed 230 KIAS. Turn right direct to DC010, to <u>VERIG</u> between 10000 and FL130. In order to reach exit altitude min. PDG 5.5% up to 10000.			

Recommended navaid: EN NDB.

WAYPOINT COORDINATES  
AD 2-LHDC-RNAV<sub>(GNSS)</sub> SID 04R

WAYPOINT	LATITUDE	LONGITUDE	WAYPOINT TYPE
<b>DC008</b>	N47 31 59.7	E021 41 17.0	FLY-OVER
<b>DC007</b>	N47 34 36.6	E021 45 34.6	FLY-OVER
<b>DC009</b>	N47 22 49.4	E021 46 50.0	FLY-BY
<b>DC010</b>	N47 22 24.9	E021 42 15.8	FLY-BY

CLOSE-IN OBSTACLES

NAME	LATITUDE	LONGITUDE	TYPE	ELEVATION (AT TOP)	HEIGHT
<b>LHDC_AREA2B_P_10</b>	N47 29 49.57	E021 37 56.02	TREE	402	30
<b>LHDC_AREA2B_P_13</b>	N47 29 48.47	E021 37 54.71	TREE	396	27
<b>LHDC_AREA2B_P_556</b>	N47 29 51.71	E021 37 59.50	TREE	412	46
<b>LHDC_AREA2B_P_563</b>	N47 29 49.62	E021 37 56.07	TREE	403	39
<b>LHDC_AREA2B_S_659_001</b>	N47 29 44.91	E021 37 46.38	TREE	379	18
<b>LHDC_AREA2B_S_659_002</b>	N47 29 45.66	E021 37 45.39	TREE	379	18
<b>LHDC_AREA2B_S_659_003</b>	N47 29 46.40	E021 37 47.23	TREE	379	18
<b>LHDC_AREA2B_S_659_004</b>	N47 29 45.80	E021 37 48.34	TREE	379	18