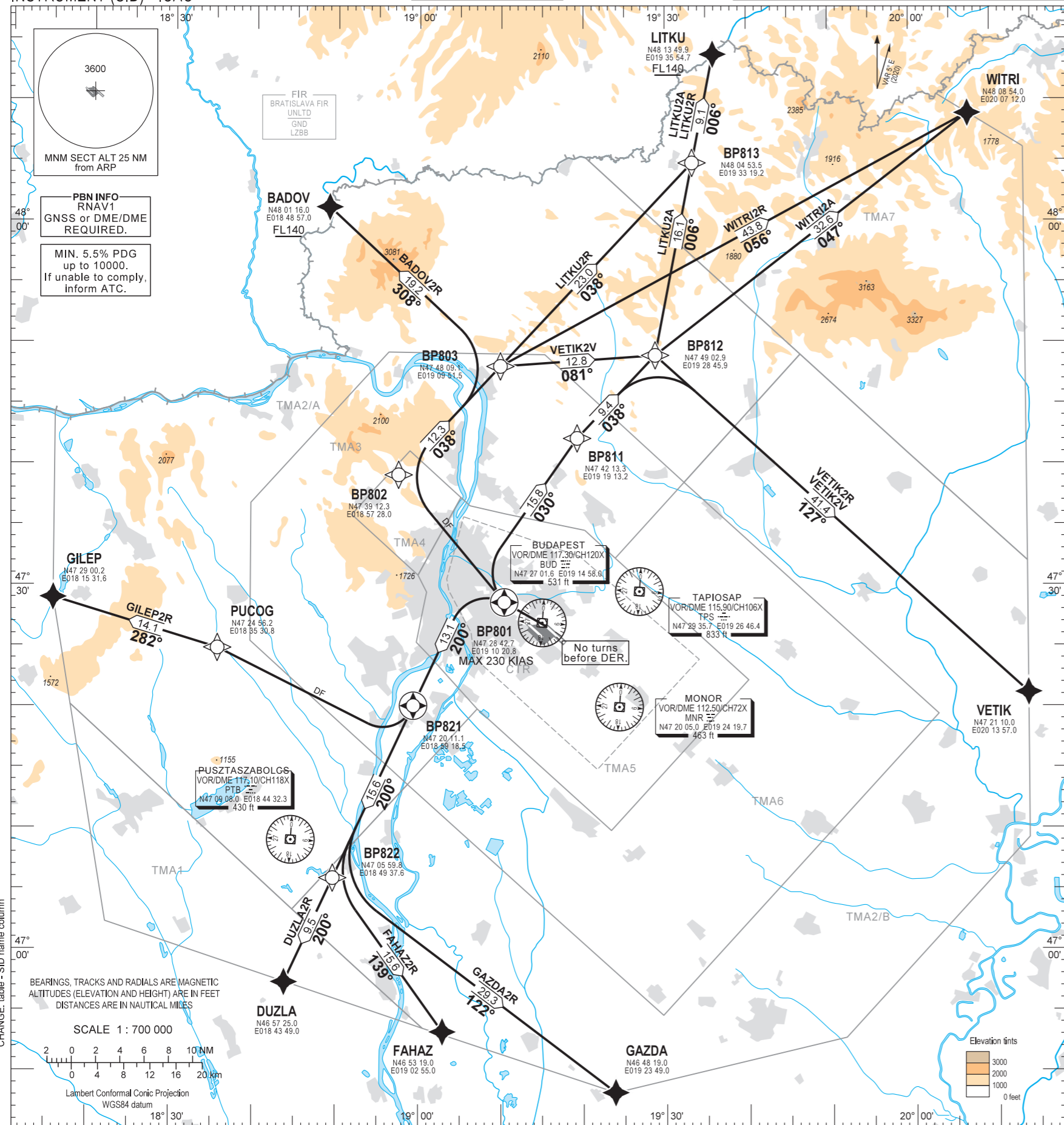


STANDARD DEPARTURE CHART -
INSTRUMENT (SID) - ICAO

TRANSITION ALTITUDE
10000

BUDAPEST APP 122.975 123.860 BUDAPEST GROUND 121.910
BUDAPEST DELIVERY 134.540
BUDAPEST TOWER 118.100 ATIS 132.380 (117.300)
BUDAPEST INFORMATION (NORTH) 119.350

BUDAPEST/LISZT FERENC
RNAV RWY 31R
BADOV2R, DUZLA2R, FAHAZ2R, GAZDA2R, GILEP2R,
WITRI2A, WITRI2R, LITKU2A, LITKU2R, VETIK2R, VETIK2V



An aeroplane should not be diverted from its assigned route unless:
it is necessary for the safety of the aeroplane (e.g. for avoidance of severe weather or to resolve a traffic conflict).

CLIMBING:
Min. 5.5% PDG up to 10000. If unable to comply, inform ATC. After departure climb initially 7000. Further climb only by ATC.

CONTACT:
If pilot not otherwise instructed by Budapest TWR, all departing aircraft, irrespective of the assigned SID, when passing 3000, shall contact Budapest APP on 122.975.

R/T FAILURE:
If a departing controlled aircraft having acknowledged an initial (eg. 7000) or intermediate clearance, to climb to a level other than the one specified in the filed FPL for the en-route phase of the flight and no time or geographical limit was included in the clearance, should maintain for a period of seven minutes the level (eg. 7000) to which it was cleared and then should climb to the level included in the filed FPL unless the cruising level was definitely specified in the en-route clearance.

SID NAME	PROCEDURE	RESTRICTIONS
VETIK2R (VETIK TWO ROMEO DEPARTURE)	To BP801 climb on course 295°, no turns before DER. To BP811 on course 030°, to BP812, to VETIK.	
VETIK2V (VETIK TWO VICTOR DEPARTURE)	To BP801 climb on course 295°, no turns before DER. Direct to BP802. To BP803, to BP812, to VETIK.	
WITRI2A (WITRI TWO ALFA DEPARTURE)	To BP801 climb on course 295°, no turns before DER. To BP811 on course 030°, to BP812, to WITRI.	
WITRI2R (WITRI TWO ROMEO DEPARTURE)	To BP801 climb on course 295°, no turns before DER. Direct to BP802. To BP803, to WITRI.	
LITKU2A (LITKU TWO ALFA DEPARTURE)	To BP801 climb on course 295°, no turns before DER. To BP811 on course 030°, to BP812, to BP813, to LITKU at or above FL140.	
LITKU2R (LITKU TWO ROMEO DEPARTURE)	To BP801 climb on course 295°, no turns before DER. Direct to BP802. To BP803, to BP813, to LITKU at or above FL140.	MAX 230 KIAS at BP801.
BADOV2R (BADOV TWO ROMEO DEPARTURE)	To BP801 climb on course 295°, no turns before DER. Direct to BP802. To BP803, to BADOV at or above FL140.	
GILEP2R (GILEP TWO ROMEO DEPARTURE)	To BP801 climb on course 295°, no turns before DER. To BP821 on course 200°. Direct to PUCOG. To GILEP.	
DUZLA2R (DUZLA TWO ROMEO DEPARTURE)	To BP801 climb on course 295°, no turns before DER. To BP821 on course 200°. To BP822, to DUZLA.	
FAHAZ2R (FAHAZ TWO ROMEO DEPARTURE)	To BP801 climb on course 295°, no turns before DER. To BP821 on course 200°. To BP822, to FAHAZ.	
GAZDA2R (GAZDA TWO ROMEO DEPARTURE)	To BP801 climb on course 295°, no turns before DER. To BP821 on course 200°. To BP822, to GAZDA.	

Recommended navaid: BUD VOR.

BUDAPEST TMA						BUDAPEST CTR
TMA1		TMA3		TMA6		CTR
TMA2/A		TMA4		TMA7		
TMA2/B		TMA5				

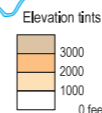
CHANGE: table - SID name column

BEARINGS, TRACKS AND RADIALS ARE MAGNETIC
ALTITUDES (ELEVATION AND HEIGHT) ARE IN FEET
DISTANCES ARE IN NAUTICAL MILES

SCALE 1 : 700 000



Lambert Conformal Conic Projection
WGS84 datum



THIS PAGE IS INTENTIONALLY LEFT BLANK