

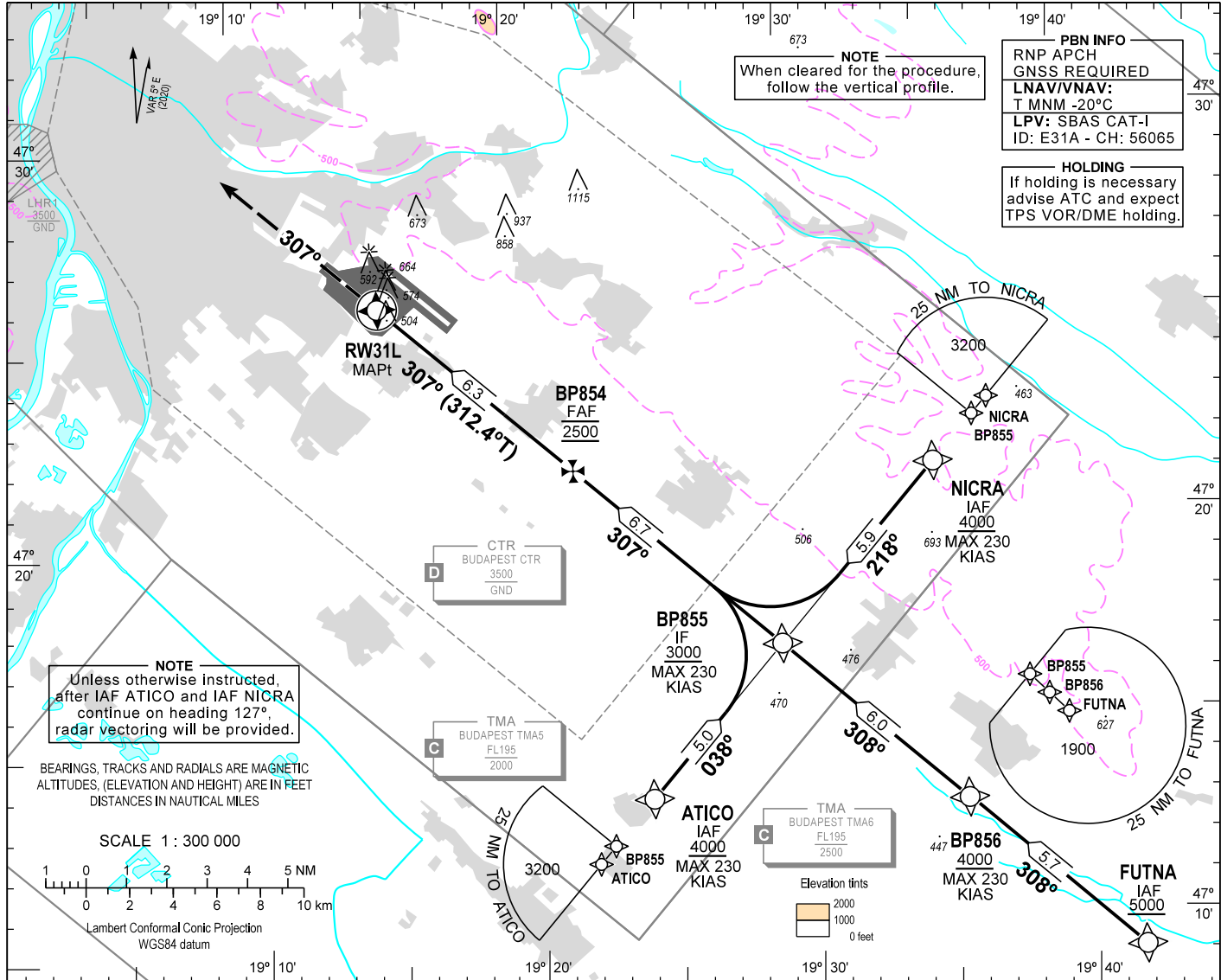
AIP HUNGARY

INSTRUMENT APPROACH CHART - ICAO

AERODROME ELEV 496
HEIGHTS RELATED TO THR RWY 31L - ELEV 448

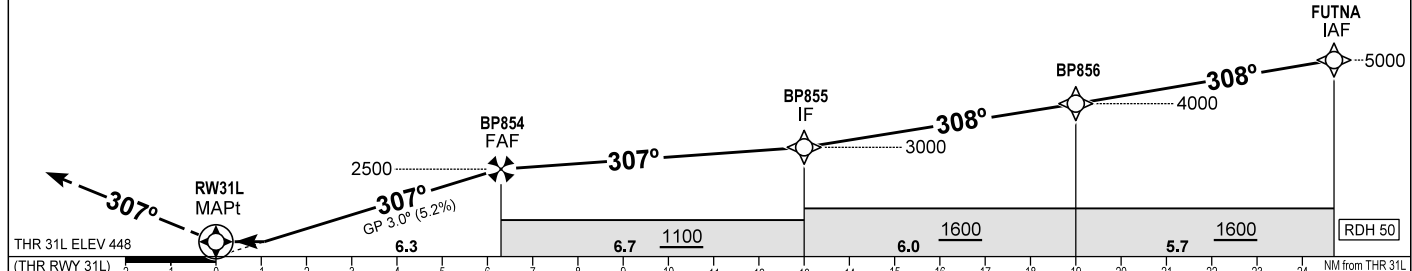
| | | | | |
|------------------------------|---------|---------|-------------------|-------------------|
| BUDAPEST APP | 122.975 | 123.860 | BUDAPEST GROUND | 121.910 |
| BUDAPEST TOWER | 118.100 | 119.510 | BUDAPEST DELIVERY | 134.540 |
| BUDAPEST INFORMATION (NORTH) | | | ATIS | 132.380 (117.300) |
| | | | | 119.350 |

BUDAPEST/LISZT FERENC
RNP RWY 31L
(ACFT CAT A, B, C, D)



MISSED APPROACH
Climb on RWY heading to 3000. Expect radar vectors.
RCF: follow missed approach procedure and at 10.0 NM from RWY31L W/P on heading 307° turn right to TPS VOR and hold as published on AD 2-LHBP-VOR-31R - 1 chart.

TRANSITION ALTITUDE
10000



CHANGE: minima box, obstacles, TAA

AD 2 LHBP INSTRUMENT APPROACH CHART RNP RWY 31L

via FUTNA

| PT | WP ID | Role | OverFly | Bearing/ (Len Dur) | Turn Direction | Altitude (FT) | IAS (KT) | VRT ANG | NAV PERF |
|----|-------|------|---------|-----------------------|----------------|---------------|----------|---------|----------|
| IF | FUTNA | IAF | | | | +5000 | | | RNP APCH |
| TF | BP856 | | | 312.6 T/5.7 NM | | +4000 | -230 | | RNP APCH |
| TF | BP855 | IF | | 312.5 T/6.0 NM | | +3000 | -230 | | RNP APCH |
| TF | BP854 | FAF | | 312.4 T/6.7 NM | | @2500 | | | RNP APCH |
| TF | RW31L | MAPt | Y | 312.4 T/6.3 NM | | +498 | | -3.0 | RNP APCH |
| VM | | | | 312.4 T | | @3000 | | | |

via ATICO

| PT | WP ID | Role | OverFly | Bearing/ (Len Dur) | Turn Direction | Altitude (FT) | IAS (KT) | VRT ANG | NAV PERF |
|----|-------|------|---------|-----------------------|----------------|---------------|----------|---------|----------|
| TF | ATICO | IAF | | | | +4000 | -230 | | RNP APCH |
| TF | BP855 | IF | | 042.5 T/5.0 NM | | +3000 | -230 | | RNP APCH |
| TF | BP854 | FAF | | 312.4 T/6.7 NM | | @2500 | | | RNP APCH |
| TF | RW31L | MAPt | Y | 312.4 T/6.3 NM | | +498 | | -3.0 | RNP APCH |
| VM | | | | 312.4 T | | @3000 | | | |

via NICRA

| PT | WP ID | Role | OverFly | Bearing/ (Len Dur) | Turn Direction | Altitude (FT) | IAS (KT) | VRT ANG | NAV PERF |
|----|-------|------|---------|-----------------------|----------------|---------------|----------|---------|----------|
| TF | NICRA | IAF | | | | +4000 | -230 | | RNP APCH |
| TF | BP855 | IF | | 222.5T/5.9 NM | | +3000 | -230 | | RNP APCH |
| TF | BP854 | FAF | | 312.4 T/6.7 NM | | @2500 | | | RNP APCH |
| TF | RW31L | MAPt | Y | 312.4 T/6.3 NM | | +498 | | -3.0 | RNP APCH |
| VM | | | | 312.4 T | | @3000 | | | |

SBAS FAS Data Block Coding Data

WAYPOINT COORDINATES SEE: AD 2.22.

FAS-DB (CRC wrapped data)

| | |
|---------------------------------|--|
| Operation type | 0 |
| SBAS provider ID | 1 |
| Airport identifier | LHBP |
| RWY | 31L |
| Approach performance designator | 0 |
| Route indicator | |
| Reference path data selector | 0 |
| Reference path identifier | E31A |
| LTP/FTP latitude | 472549.7100N |
| LTP/FTP longitude | 0191500.8900E |
| LTP/FTP ellipsoidal height (m) | 180.7 |
| FPAP latitude | 472655.6755N |
| FPAP longitude | 0191314.1980E |
| Threshold crossing height (TCH) | 15 |
| TCH units | 1 |
| Glide path angle (degrees) | 3.00 |
| Course width at threshold (m) | 105.00 |
| Length offset (m) | 16 |
| Horizontal alert limit (m) | 40.0 |
| Vertical alert limit (m) | 35.0 |
| Computed Data Block | 10 10 02 08 0C DF 00 00 01 31 33 05 1C DE 5A 14 34 E5 42 08 0F 1B 5B 03 02 78 BE FC 2C 81 2C 01 64 02 C8 AF 7A 70 EE 20 |
| Computed CRC | 7A70EE20 |
| FAS-DB (not CRC wrapped) | |
| ICAO code | LH |
| LTP/FTP Orthometric height (m) | 136.7 |