

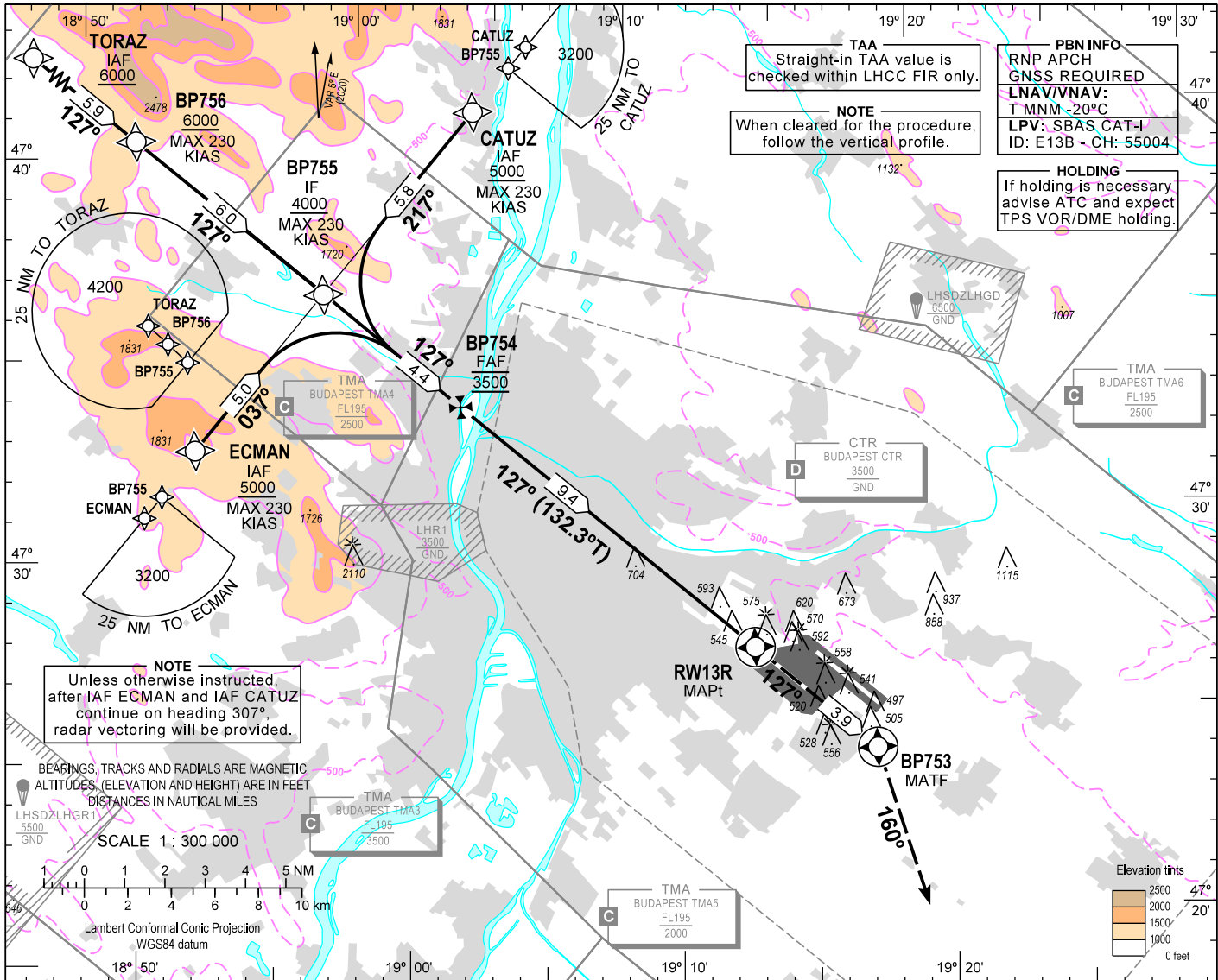
AIP HUNGARY

INSTRUMENT APPROACH CHART - ICAO

AERODROME ELEV 496  
HEIGHTS RELATED TO THR RWY 13R - ELEV 448

BUDAPEST APP 122.975 123.860  
BUDAPEST GROUND 121.910  
BUDAPEST DELIVERY 134.540  
BUDAPEST TOWER 118.100  
ATIS 132.380 (117.300)  
BUDAPEST INFORMATION (NORTH) 119.350

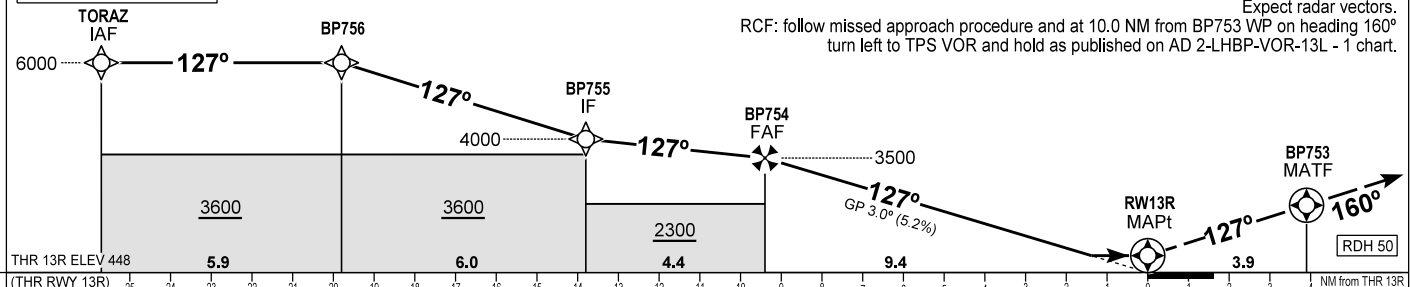
BUDAPEST/LISZT FERENC  
RNP RWY 13R  
(ACFT CAT A, B, C, D)



TRANSITION ALTITUDE  
10000

MISSED APPROACH  
Climb to BP753.  
At BP753 turn right to heading 160° and continue climb to 3000.  
Expect radar vectors.

RCF: follow missed approach procedure and at 10.0 NM from BP753 WP on heading 160° turn left to TPS VOR and hold as published on AD 2-LHBP-VOR-13L - 1 chart.



OCA (H)	A	B	C	D
STRaight-IN APPROACH	960 (520)			
LNAV	960 (520)			
LNAV/VNAV	725 (277)	737 (289)	746 (298)	756 (308)
LPV	676 (228)	688 (240)	697 (249)	707 (259)
CIRCLING	970	1160	1340	1510

DIST THR / RWY13L	NM	9.0	8.0	7.0	6.0	5.0	4.0	3.0	2.0
ALTITUDE	ft	3360	3050	2730	2410	2090	1770	1450	1130
Timing not authorized to define the MAPt.									
GS	kt	60	90	120	150	180			
BP754 - RWY13R (9.4 NM)	min:sec	9:24	6:16	4:42	3:46	3:08			
Rate of descent (319 ft/NM)	ft/min	320	480	640	800	960			

CHANGE: minima box obstacles

**AD 2 LHBP INSTRUMENT APPROACH CHART RNP RWY 13R**

**via TORAZ**

PT	WP ID	Role	OverFly	Bearing/ (Len Dur)	Turn Direction	Altitude (FT)	IAS (KT)	VRT ANG	NAV PERF
IF	TORAZ	IAF				+6000			RNP APCH
TF	BP756			131.7 T/5.9 NM		+6000	-230		RNP APCH
TF	BP755	IF		132.3 T/6.0 NM		+4000	-230		RNP APCH
TF	BP754	FAF		132.4 T/4.4 NM		@3500			RNP APCH
TF	RW13R	MAPt	Y	132.3 T/9.4 NM		+498		-3.0	RNP APCH
TF	BP753	MATF	Y	132.4 T/3.9 NM					RNP APCH
VM				165.0 T		@3000			

**via CATUZ**

PT	WP ID	Role	OverFly	Bearing/ (Len Dur)	Turn Direction	Altitude (FT)	IAS (KT)	VRT ANG	NAV PERF
IF	CATUZ	IAF				+5000	-230		RNP APCH
TF	BP755	IF		222.3 T/5.8 NM		+4000	-230		RNP APCH
TF	BP754	FAF		132.4 T/4.4 NM		@3500			RNP APCH
TF	RW13R	MAPt	Y	132.3 T/9.4 NM		+498		-3.0	RNP APCH
TF	BP753	MATF	Y	132.4 T/3.9 NM					RNP APCH
VM				165.0 T		@3000			

**via ECMAN**

PT	WP ID	Role	OverFly	Bearing/ (Len Dur)	Turn Direction	Altitude (FT)	IAS (KT)	VRT ANG	NAV PERF
IF	ECMAN	IAF				+5000	-230		RNP APCH
TF	BP755	IF		042.4 T/5.0 NM		+4000	-230		RNP APCH
TF	BP754	FAF		132.4 T/4.4 NM		@3500			RNP APCH
TF	RW13R	MAPt	Y	132.3 T/9.4 NM		+498		-3.0	RNP APCH
TF	BP753	MATF	Y	132.4 T/3.9 NM					RNP APCH
VM				165.0 T		@3000			

**SBAS FAS Data Block Coding Data**

WAYPOINT COORDINATES SEE: AD 2.22.

**FAS-DB (CRC wrapped data)**

Operation type	0
SBAS provider ID	1
Airport identifier	LHBP
RWY	13R
Approach performance designator	0
Route indicator	
Reference path data selector	0
Reference path identifier	E13B
LTP/FTP latitude	472655.3400N
LTP/FTP longitude	0191314.7300E
LTP/FTP ellipsoidal height (m)	180.6
FPAP latitude	472547.9550N
FPAP longitude	0191503.7180E
Threshold crossing height (TCH)	15
TCH units	1
Glide path angle (degrees)	3.00
Course width at threshold (m)	105.00
Length offset (m)	88
Horizontal alert limit (m)	40.0
Vertical alert limit (m)	35.0
Computed Data Block	10 10 02 08 0C 4D 00 00 02 33 31 05 D8 DE 5C 14 D4 A7 3F 08 0E 1B 8E F1 FD 78 53 03 2C 81 2C 01 64 0B C8 AF C3 C6 1F 72
Computed CRC	C3C61F72
<b>FAS-DB (not CRC wrapped)</b>	
ICAO code	LH
LTP/FTP Orthometric height (m)	136.6