

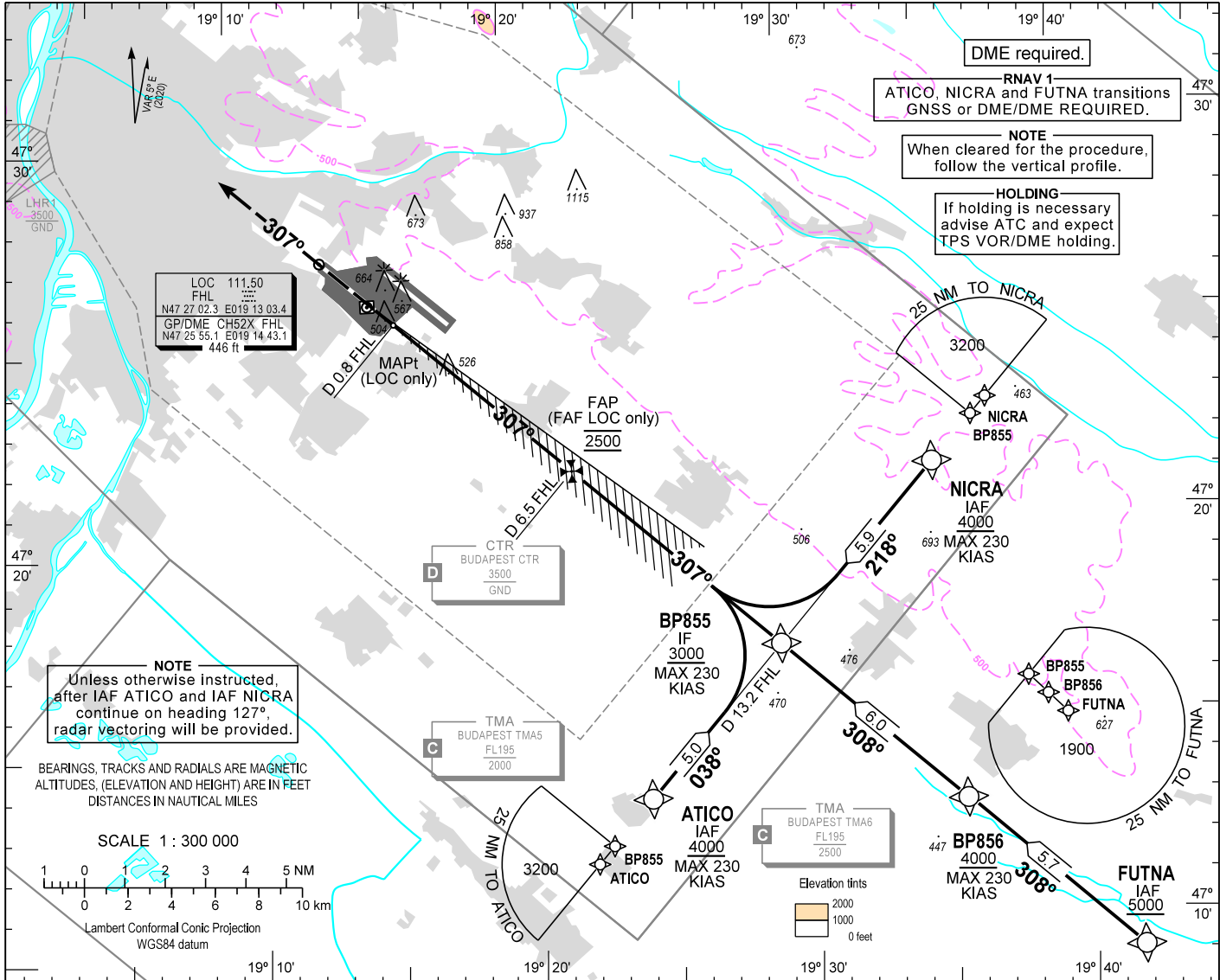
AIP HUNGARY

INSTRUMENT APPROACH CHART - ICAO

AERODROME ELEV 496
HEIGHTS RELATED TO THR RWY 31L - ELEV 448

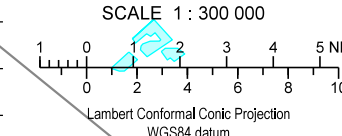
BUDAPEST APP 122.975 123.860 BUDAPEST GROUND 121.910
BUDAPEST TOWER 118.100 BUDAPEST DELIVERY 134.540
BUDAPEST INFORMATION (NORTH) ATIS 132.380 (117.300)
119.350

BUDAPEST/LISZT FERENC
ILS or LOC RWY 31L
(ACFT CAT A, B, C, D)



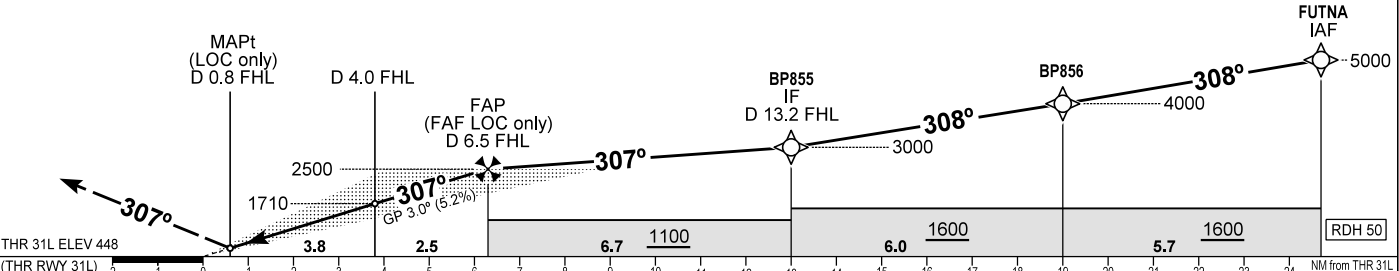
NOTE
Unless otherwise instructed, after IAF ATICO and IAF NICRA continue on heading 127°, radar vectoring will be provided.

BEARINGS, TRACKS AND RADIALS ARE MAGNETIC ALTITUDES, (ELEVATION AND HEIGHT) ARE IN FEET DISTANCES IN NAUTICAL MILES



MISSED APPROACH
Climb on RWY heading to 3000. Expect radar vectors.
RCF: follow missed approach procedure and at D 10.0 NM from FHL on heading 307° turn right to TPS VOR and hold as published on AD 2-LHBP-VOR-31R - 1 chart.

TRANSITION ALTITUDE
10000



CHANGE: minima box, obstacles, TAA

OCA (H)		A	B	C	D	DME FHL					
STRAIGHT-IN APPROACH	CAT I macg 2.5%	817 (369)	829 (381)	837 (389)	848 (400)	NM	6.0	5.0	4.0	3.0	2.0
	CAT I macg 3.2%	635 (187)	647 (199)	655 (207)	666 (218)	NM	5.8	4.8	3.8	2.8	1.8
	CAT II macg 2.5%	729 (281)	746 (298)	758 (310)	772 (324)	ft					
	CAT II macg 3.2%	547 (99)	564 (116)	576 (128)	590 (142)	2340	2030	1710	1390	1070	
	LOC	820 (380)	840 (400)	860 (420)							
CIRCLING		970	1160	1340	1510						
Timing not authorized to define the MAPt.											
GS						kt	60	90	120	150	180
FAP/FAF - THR 31L (6.3 NM)						min:sec	6:18	4:12	3:09	2:31	2:06
Rate of descent (319 ft/NM)						ft/min	320	480	640	800	960

AD 2 LHBP INSTRUMENT APPROACH CHART ILS OR LOC RWY 31L

via FUTNA

PT	WP ID	Role	OverFly	Bearing/ (Len Dur)	Turn Direction	Altitude (FT)	IAS (KT)	VRT ANG	NAV PERF
IF	FUTNA	IAF				+5000			RNAV1
TF	BP856			312.6 T/5.7 NM		+4000	-230		RNAV1
TF	BP855	IF		312.5 T/6.0 NM		+3000	-230		RNAV1
CF	BP854	FAF		312.4 T/6.7 NM		@2500			
CF	RW31L	LTP	Y	312.4 T/6.3 NM		+498		-3.0	
VM				312.4 T		@3000			

via ATICO

PT	WP ID	Role	OverFly	Bearing/ (Len Dur)	Turn Direction	Altitude (FT)	IAS (KT)	VRT ANG	NAV PERF
TF	ATICO	IAF				+4000	-230		RNAV1
TF	BP855	IF		042.5 T/5.0 NM		+3000	-230		RNAV1
CF	BP854	FAF		312.4 T/6.7 NM		@2500			
CF	RW31L	LTP	Y	312.4 T/6.3 NM		+498		-3.0	
VM				312.4 T		@3000			

via NICRA

PT	WP ID	Role	OverFly	Bearing/ (Len Dur)	Turn Direction	Altitude (FT)	IAS (KT)	VRT ANG	NAV PERF
TF	NICRA	IAF				+4000	-230		RNAV1
TF	BP855	IF		222.5T/5.9 NM		+3000	-230		RNAV1
CF	BP854	FAF		312.4 T/6.7 NM		@2500			
CF	RW31L	LTP	Y	312.4 T/6.3 NM		+498		-3.0	
VM				312.4 T		@3000			

WAYPOINT COORDINATES SEE: AD 2.22.