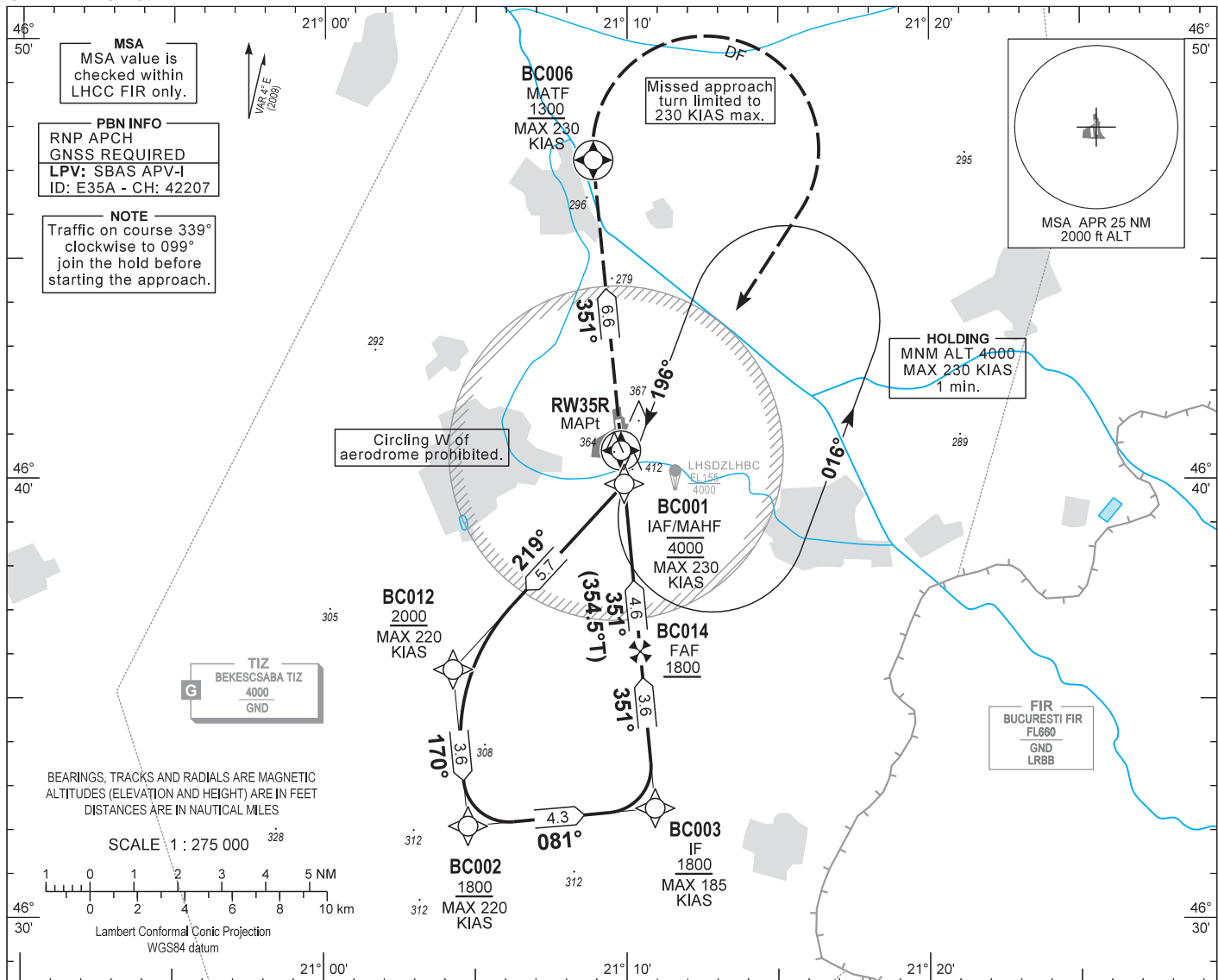


AIP HUNGARY

INSTRUMENT APPROACH CHART - ICAO
AERODROME ELEV 286
HEIGHTS RELATED TO THR RWY 35R - ELEV 286

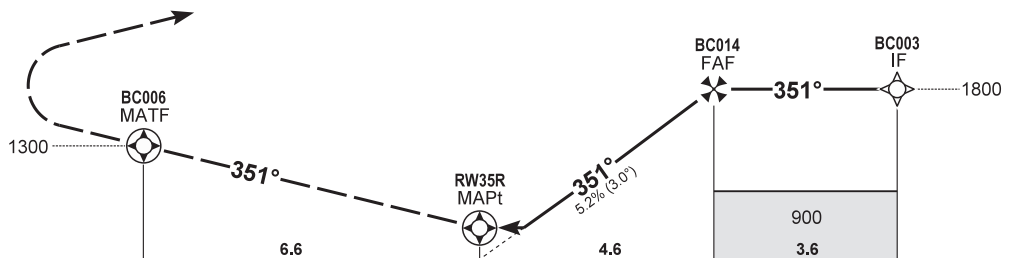
BÉKÉSCSABA INFO 123.260
BUDAPEST INFORMATION (EAST) 133.000

BÉKÉSCSABA
RNP RWY 35R
(ACFT CAT A, B, C, D)



MISSED APPROACH
Climb to BC006 at or above 1300.
Turn right direct to BC001 and hold at 4000.
Maximum turning speed: 230 KIAS.

TRANSITION ALTITUDE
10000



THR 35R ELEV 286 (THR RWY 35R) 11 10 9 8 7 6 5 4 3 2 1 0 1 2 3 4 5 6 7 8 9 10 11 12 NM from THR 35R

OCA (OCH)		A	B	C	D	DIST THR / RWY35R					
						NM	4.0	3.0	2.0	1.0	
STRAIGHT-IN APPROACH	LNAV	670 (390)				ALTITUDE					
	LPV	552 (266)	564 (278)	572 (286)	583 (297)	ft	1610	1290	970	650	
CIRCLING APPROACH E of AD only	ft AMSL	720	780	880	980	GROUND SPEED					
	VIS. m	1900	2800	3700	4600	kt	60	90	120	150	180
						FAF - RWY35R 4.6 NM					
						Rate of descent (319 ft/NM)					
						min:sec	4:36	3:04	2:18	1:51	1:32
						ft/min	320	480	640	800	960

AD 2 LHBC INSTRUMENT APPROACH CHART RNP RWY 35R

PT	WP ID	Role	OverFly	Bearing/ (Len Dur)	Turn Direction	Altitude (FT)	IAS (KT)	VRT ANG	NAV PERF
IF	BC001	IAF				@4000			RNP APCH
TF	BC012			222.6 T/5.7 NM		+2000	-220		RNP APCH
TF	BC002			174.5 T/3.6 NM		+1800	-220		RNP APCH
TF	BC003	IF		084.6 T/4.3 NM		+1800	-185		RNP APCH
TF	BC014	FAF		354.6 T/3.6 NM		+1800			RNP APCH
TF	RW35R	MAPt	Y	354.5 T/4.6 NM		+336		-3.0°	RNP APCH
TF	BC006	MATF	Y	354.5 T/6.6 NM		+1300	-230		RNP APCH
DF	BC001				R	@4000	-230		RNP APCH
HM	BC001	MAHF		200.0 T/1 min	L	@4000	-230		RNP APCH

SBAS FAS Data Block Coding Data

FAS-DB (CRC wrapped data)

Operation type	0
SBAS Provider	1
Airport identifier	LHBC
Runway	35R
Approach Performance Designator	0
Route indicator	
Reference Path Data Selector	0
Reference Path Identifier	E35A
LTP/FTP Latitude	464039.1900N
LTP/FTP Longitude	0210947.9800E
LTP/FTP Ellipsoidal Height (m)	132.1
FPAP Latitude	464133.8315N
FPAP Longitude	0210940.3785E
Threshold Crossing Height	50
TCH Units Selector	0
Glidepath Angle (degrees)	3.00
Course Width (m)	105.00
Length Offset (m)	400
HAL (m)	40.0
VAL (m)	50.0
Data Block	10 03 02 08 0C 63 00 00 01 35 33 05 2C 26 08 14 98 12 15 09 29 19 E3 AA 01 9D C4 FF F4 01 2C 01 64 32 C8 FA 2F 23 E0 FB
Calculated CRC Value	2F23E0FB

FAS-DB (not CRC wrapped data)

ICAO Code	LH
LTP/FTP Orthometric Height (m)	87.1

WAYPOINT COORDINATES

WP ID	Latitude	Longitude
BC001	N46 39 53.6	E021 09 54.3
BC012	N46 35 40.1	E021 04 15.2
BC002	N46 32 06.3	E021 04 45.2
BC003	N46 32 30.8	E021 10 55.7
BC014	N46 36 04.7	E021 10 26.1
RW35R	N46 40 39.2	E021 09 48.0
BC006	N46 47 15.8	E021 08 52.8

Holding procedure

Holding fix: BC001
 Left hand holding pattern.
 Maximum speed: 230 KIAS
 Inbound track: 196°
 Outbound track: 016°
 Rate of turn: 3°/sec. or 25° bank angle
 (whichever requires lesser bank)
 Outbound times: 1 min.
 Minimum holding altitude: 4000