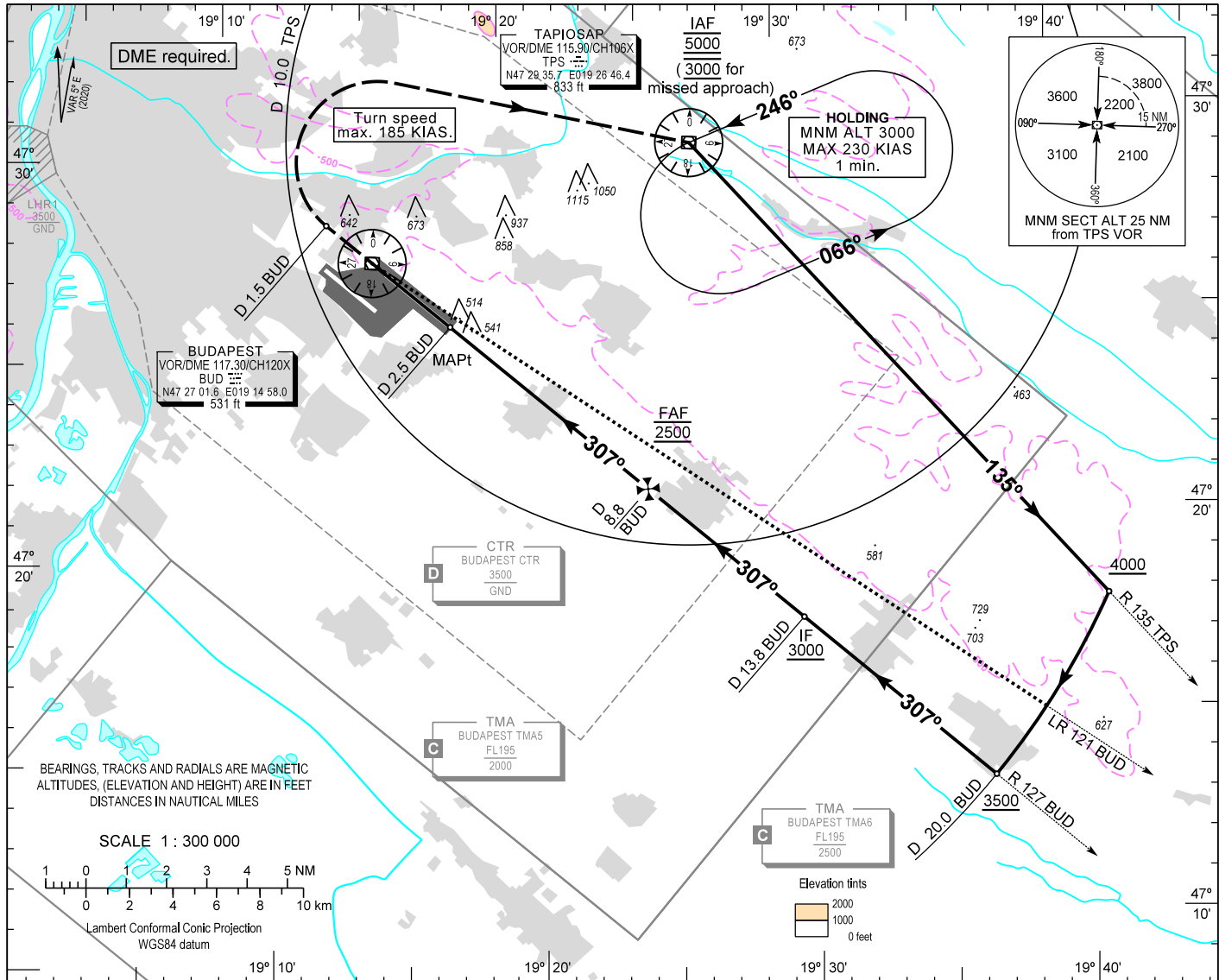


AIP HUNGARY

INSTRUMENT APPROACH CHART - ICAO  
AERODROME ELEV 496  
HEIGHTS RELATED TO THR RWY 31R - ELEV 416

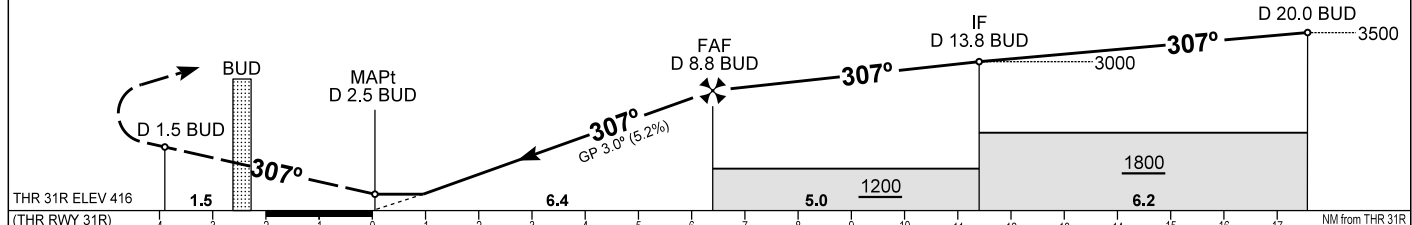
BUDAPEST APP 122.975 123.860  
BUDAPEST GROUND 121.910  
BUDAPEST TOWER 118.100  
BUDAPEST INFORMATION (NORTH) 119.350  
BUDAPEST DELIVERY 134.540  
ATIS 132.380 (117.300)

BUDAPEST/LISZT FERENC  
VOR RWY 31R  
(ACFT CAT A, B, C, D)



**MISSED APPROACH**  
Climb to 3000 initially on R 127 BUD inbound.  
After passing the station continue on R 307 BUD outbound.  
When passing D 1.5 BUD on R 307 BUD turn right direct to TPS VOR.  
Maximum turning speed 185 KIAS.  
At 3000 enter published holding pattern at TPS VOR/DME.

TRANSITION ALTITUDE  
10000



OCA (H)	A	B	C	D
STRAIGHT-IN APPROACH	790 (380)			
CIRCLING	970	1160	1340	1510

DME BUD	NM	8.0	7.0	6.0	5.0	4.0
DIST THR / RWY 31R	NM	5.5	4.5	3.5	2.5	1.5
ALTITUDE	ft	2220	1900	1580	1260	940

Timing not authorized to define the MAPt.

GS	kt	60	90	120	150	180
FAF - THR 31R (6.4 NM)	min:sec	6:24	4:16	3:12	2:34	2:08
Rate of descent (319 ft/NM)	ft/min	320	480	640	800	960

CHANGE: minima box, obstacles, MSA

## AD 2 LHBP INSTRUMENT APPROACH CHART VOR RWY 31R

VOR approach procedure:

Initial altitude: 5000.

Leave TPS on R 135 TPS outbound and descend 4000.

At D 20.0 BUD turn right and join CW D 20.0 BUD DME arc, descend 3500.

After crossing R 121 BUD leading radial turn right and intercept R 127 BUD inbound (final track), to D 13.8 BUD (IF) descend 3000.

When crossing D 8.8 BUD (FAF) at 2500, descend to published minimum altitude.