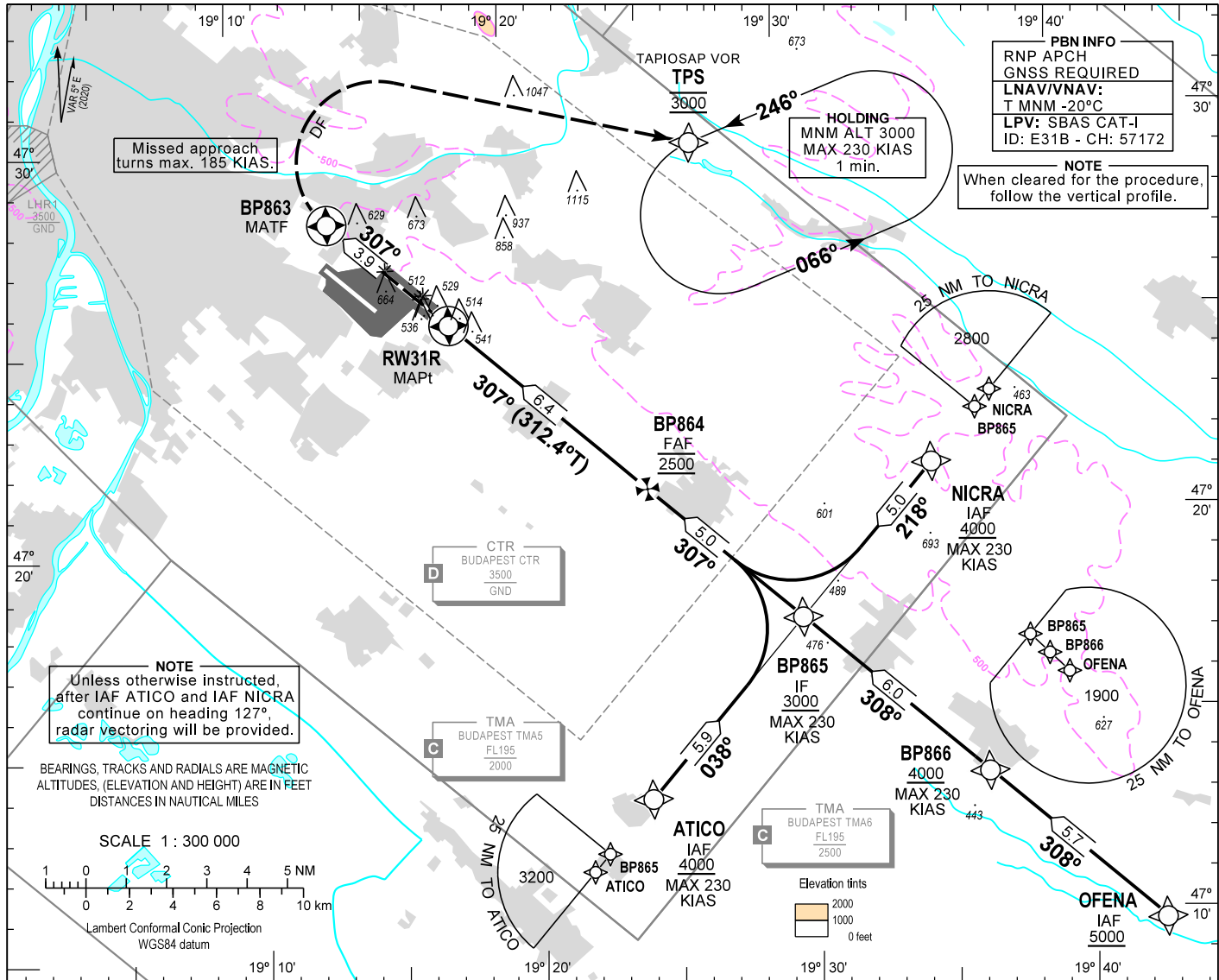


AIP HUNGARY

INSTRUMENT APPROACH CHART - ICAO  
AERODROME ELEV 496  
HEIGHTS RELATED TO THR RWY 31R - ELEV 416

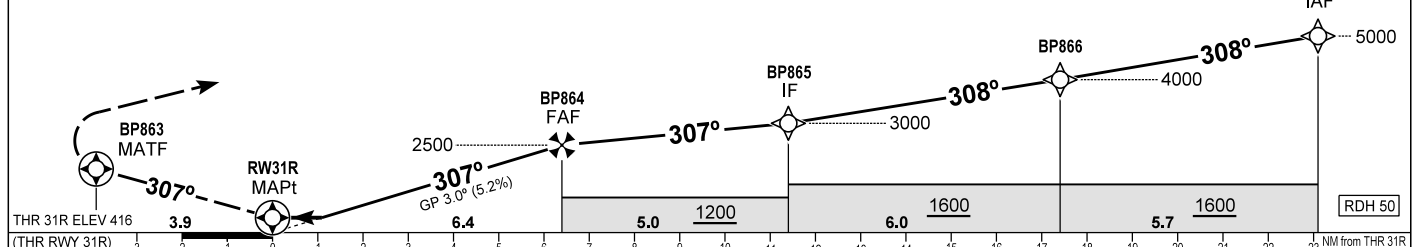
BUDAPEST APP 122.975 123.860  
BUDAPEST GROUND 121.910  
BUDAPEST DELIVERY 134.540  
BUDAPEST TOWER 118.100  
ATIS 132.380 (117.300)  
BUDAPEST INFORMATION (NORTH) 119.350

BUDAPEST/LISZT FERENC  
RNP Z RWY 31R  
(ACFT CAT A, B, C, D)



**MISSED APPROACH**  
Climb to BP863.  
At BP863 turn right direct to TPS and continue climb to 3000.  
Maximum turning speed 185 KIAS.  
At 3000 enter published holding pattern at TPS VOR/DME.

**TRANSITION ALTITUDE**  
10000



OCA (H)	A	B	C	D	DIST THR / RWY31R	NM	6.0	5.0	4.0	3.0	2.0	1.0
STRAIGHT-IN APPROACH	790 (380)				ALTITUDE	ft	2380	2060	1740	1420	1100	780
LNAV	790 (380)				Timing not authorized to define the MAPt.							
LNAV/VNAV	673 (257)	686 (270)	694 (278)	704 (288)	GS	kt	60	90	120	150	180	
LPV	597 (181)	610 (194)	618 (202)	628 (212)	BP864 - RWY31R (6.4 NM)	min:sec	6:24	4:16	3:12	2:34	2:08	
CIRCLING	970	1160	1340	1510	Rate of descent (319 ft/NM)	ft/min	320	480	640	800	960	

CHANGE: minima box, obstacles, TAA

### AD 2 LHBP INSTRUMENT APPROACH CHART RNP Z RWY 31R

via OFENA

PT	WP ID	Role	OverFly	Bearing/ (Len Dur)	Turn Direction	Altitude (FT)	IAS (KT)	VRT ANG	NAV PERF
IF	OFENA	IAF				+5000			RNP APCH
TF	BP866			312.6 T/5.7 NM		+4000	-230		RNP APCH
TF	BP865	IF		312.5 T/6.0 NM		+3000	-230		RNP APCH
TF	BP864	FAF		312.5 T/5.0 NM		@2500			RNP APCH
TF	RW31R	MAPt	Y	312.4 T/6.4 NM		+466		-3.0	RNP APCH
TF	BP863	MATF	Y	312.3 T/3.9 NM			-185		RNP APCH
DF	TPS				R	@3000	-185		RNP APCH
HM	TPS	MAHF		251.0 T/1 min	L	@3000	-230		RNP APCH

via NICRA

PT	WP ID	Role	OverFly	Bearing/ (Len Dur)	Turn Direction	Altitude (FT)	IAS (KT)	VRT ANG	NAV PERF
IF	NICRA	IAF				+4000	-230		RNP APCH
TF	BP865	IF		222.5 T/5.0 NM		+3000	-230		RNP APCH
TF	BP864	FAF		312.5 T/5.0 NM		@2500			RNP APCH
TF	RW31R	MAPt	Y	312.4 T/6.4 NM		+466		-3.0	RNP APCH
TF	BP863	MATF	Y	312.3 T/3.9 NM			-185		RNP APCH
DF	TPS				R	@3000	-185		RNP APCH
HM	TPS	MAHF		251.0 T/1 min	L	@3000	-230		RNP APCH

via ATICO

PT	WP ID	Role	OverFly	Bearing/ (Len Dur)	Turn Direction	Altitude (FT)	IAS (KT)	VRT ANG	NAV PERF
IF	ATICO	IAF				+4000	-230		RNP APCH
TF	BP865	IF		042.6T/5.9 NM		+3000	-230		RNP APCH
TF	BP864	FAF		312.5 T/5.0 NM		@2500			RNP APCH
TF	RW31R	MAPt	Y	312.4 T/6.4 NM		+466		-3.0	RNP APCH
TF	BP863	MATF	Y	312.3 T/3.9 NM			-185		RNP APCH
DF	TPS				R	@3000	-185		RNP APCH
HM	TPS	MAHF		251.0 T/1 min	L	@3000	-230		RNP APCH

SBAS FAS Data Block Coding Data

WAYPOINT COORDINATES SEE: AD 2.22.

FAS-DB (CRC wrapped data)

Operation type	0
SBAS provider ID	1
Airport identifier	LHBP
RWY	31R
Approach performance designator	0
Route indicator	Z
Reference path data selector	0
Reference path identifier	E31B
LTP/FTP latitude	472522.6200N
LTP/FTP longitude	0191737.8800E
LTP/FTP ellipsoidal height (m)	170.9
FPAP latitude	472644.5930N
FPAP longitude	0191525.4275E
Threshold crossing height (TCH)	15
TCH units	1
Glide path angle (degrees)	3.00
Course width at threshold (m)	105.00
Length offset (m)	56
Horizontal alert limit (m)	40.0
Vertical alert limit (m)	35.0
Computed Data Block	10 10 02 08 0C 5F D0 00 02 31 33 05 78 0A 5A 14 B0 AF 47 08 AD 1A 6A 80 02 37 F5 FB 2C 81 2C 01 64 07 C8 AF 17 43 EB 2D
Computed CRC	1743EB2D
<b>FAS-DB (not CRC wrapped)</b>	
ICAO code	LH
LTP/FTP Orthometric height (m)	126.9