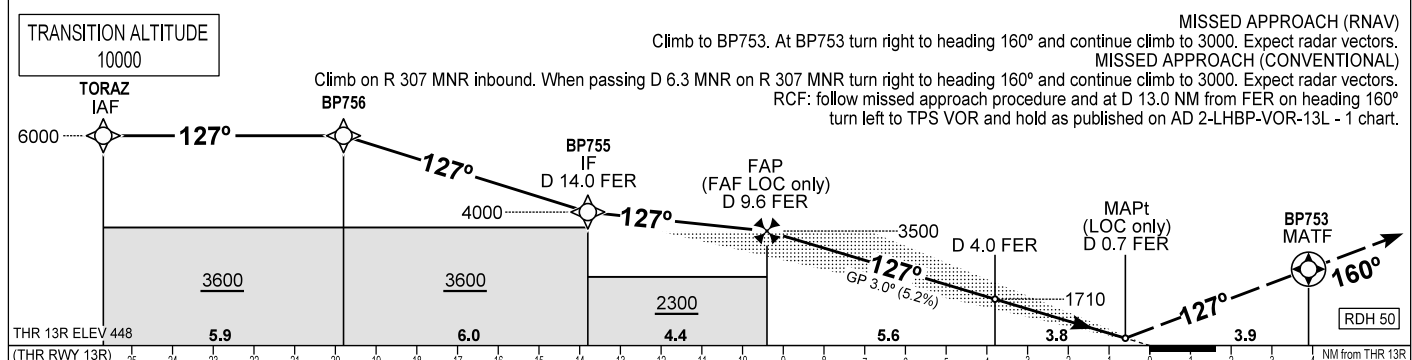
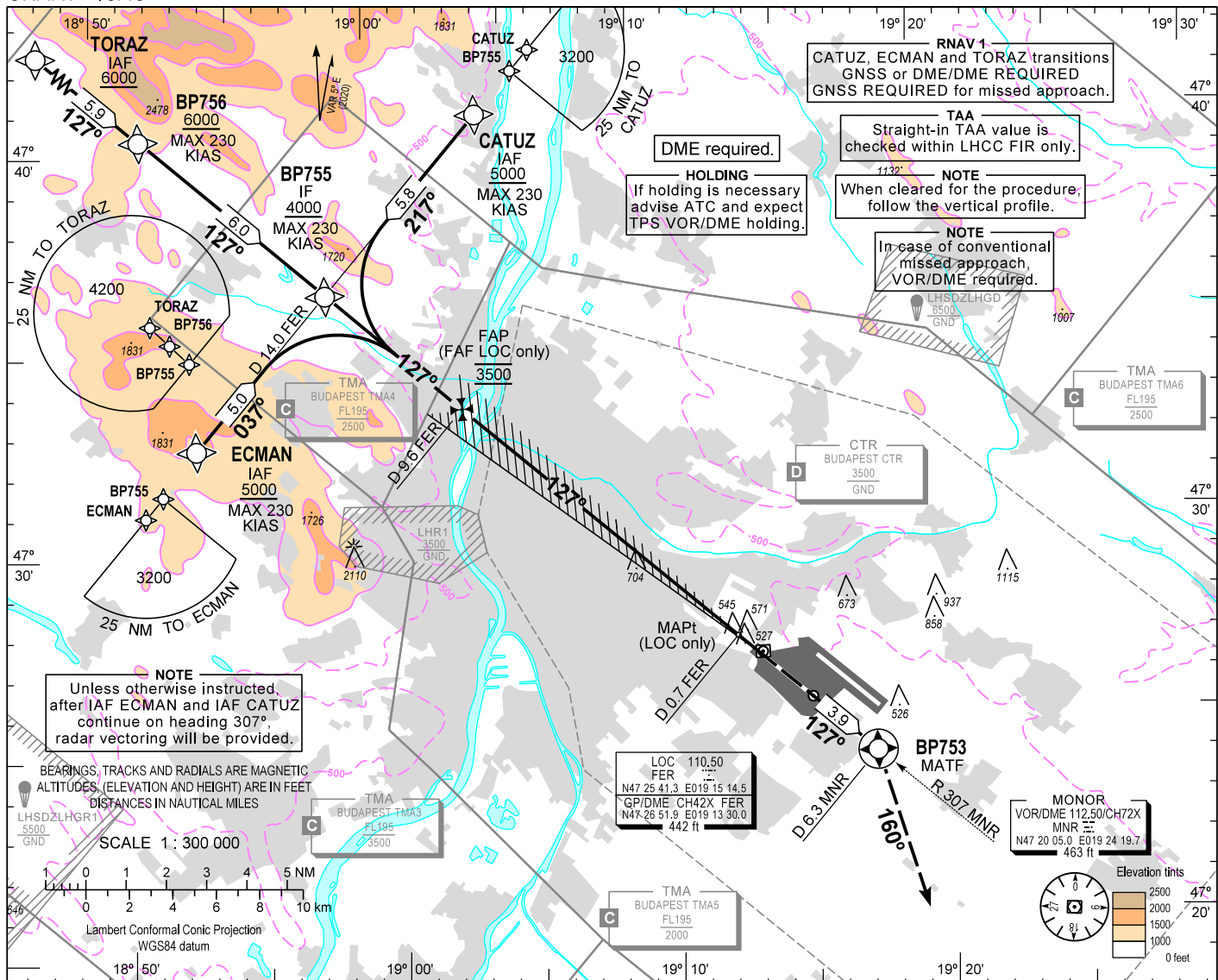


AIP HUNGARY

INSTRUMENT APPROACH CHART - ICAO
AERODROME ELEV 496
HEIGHTS RELATED TO THR RWY 13R - ELEV 448

BUDAPEST APP 122.975 123.860
BUDAPEST GROUND 121.910
BUDAPEST DELIVERY 134.540
BUDAPEST TOWER 118.100
ATIS 132.380 (117.300)
BUDAPEST INFORMATION (NORTH) 119.350

BUDAPEST/LISZT FERENC
ILS or LOC RWY 13R
(ACFT CAT A, B, C, D)



OCA (H)		A	B	C	D	DME FER		NM	9.0	8.0	7.0	6.0	5.0	4.0	3.0	2.0	
STRAIGHT-IN APPROACH	CAT I	676 (228)	688 (240)	697 (249)	707 (259)	DIST THR / RWY 13R	NM	8.8	7.8	6.8	5.8	4.8	3.8	2.8	1.8		
	CAT II	570 (122)	587 (139)	599 (151)	613 (165)	ALTITUDE	ft	3300	2980	2660	2340	2030	1710	1390	1070		
	LOC	960 (520)				Timing not authorized to define the MAPt.											
	CIRCLING	970	1160	1340	1510	GS	kt	60	90	120	150	180					
NOTE: CAT IIIB APPROVED						FAP/FAF - THR 13R (9.4 NM)		min:sec	9:24	6:16	4:42	3:46	3:08				
						Rate of descent (319 ft/NM)		ft/min	320	480	640	800	960				

CHANGE: minima box, obstacles

AD 2 LHBP INSTRUMENT APPROACH CHART ILS OR LOC RWY 13R

via TORAZ

PT	WP ID	Role	OverFly	Bearing/ (Len Dur)	Turn Direction	Altitude (FT)	IAS (KT)	VRT ANG	NAV PERF
IF	TORAZ	IAF				+6000			RNAV1
TF	BP756			131.7 T/5.9 NM		+6000	-230		RNAV1
TF	BP755	IF		132.3 T/6.0 NM		+4000	-230		RNAV1
CF	BP754	FAF		132.4 T/4.4 NM		@3500			
CF	RW13R	LTP	Y	132.3 T/9.4 NM		+498		-3.0	
TF	BP753	MATF	Y	132.4 T/3.9 NM					RNP APCH
VM				165.0 T		@3000			

via CATUZ

PT	WP ID	Role	OverFly	Bearing/ (Len Dur)	Turn Direction	Altitude (FT)	IAS (KT)	VRT ANG	NAV PERF
IF	CATUZ	IAF				+5000	-230		RNAV1
TF	BP755	IF		222.3 T/5.8 NM		+4000	-230		RNAV1
CF	BP754	FAF		132.4 T/4.4 NM		@3500			
CF	RW13R	LTP	Y	132.3 T/9.4 NM		+498		-3.0	
TF	BP753	MATF	Y	132.4 T/3.9 NM					RNP APCH
VM				165.0 T		@3000			

via ECMAN

PT	WP ID	Role	OverFly	Bearing/ (Len Dur)	Turn Direction	Altitude (FT)	IAS (KT)	VRT ANG	NAV PERF
IF	ECMAN	IAF				+5000	-230		RNAV1
TF	BP755	IF		042.4 T/5.0 NM		+4000	-230		RNAV1
CF	BP754	FAF		132.4 T/4.4 NM		@3500			
CF	RW13R	LTP	Y	132.3 T/9.4 NM		+498		-3.0	
TF	BP753	MATF	Y	132.4 T/3.9 NM					RNP APCH
VM				165.0 T		@3000			

WAYPOINT COORDINATES SEE: AD 2.22.