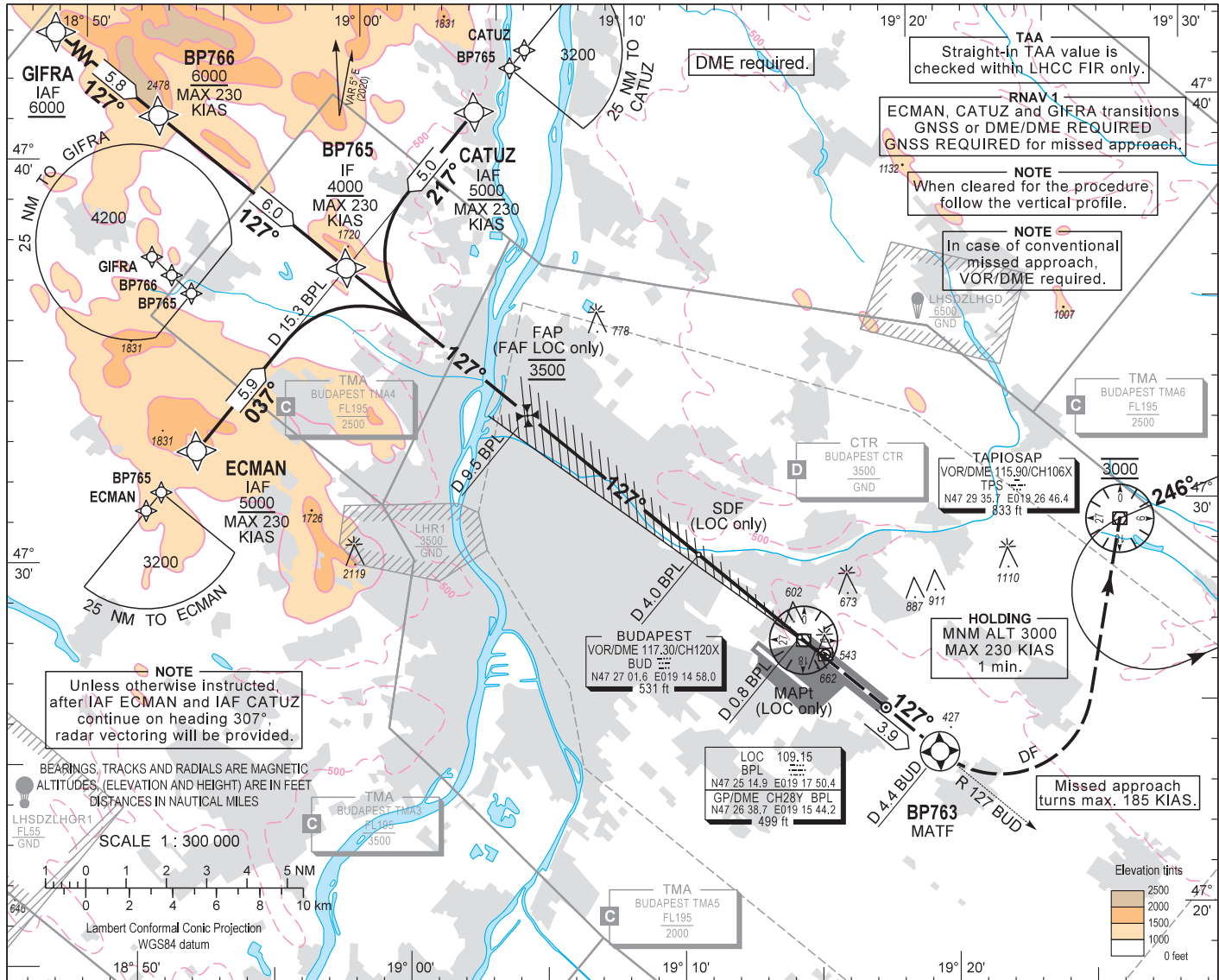


AIP HUNGARY

INSTRUMENT APPROACH CHART - ICAO
AERODROME ELEV 496
HEIGHTS RELATED TO THR RWY 13L - ELEV 496

BUDAPEST APP 122.975 123.860
BUDAPEST GROUND 121.910
BUDAPEST DELIVERY 134.540
BUDAPEST TOWER 118.100
ATIS 132.380 (117.300)
BUDAPEST INFORMATION (NORTH) 119.350

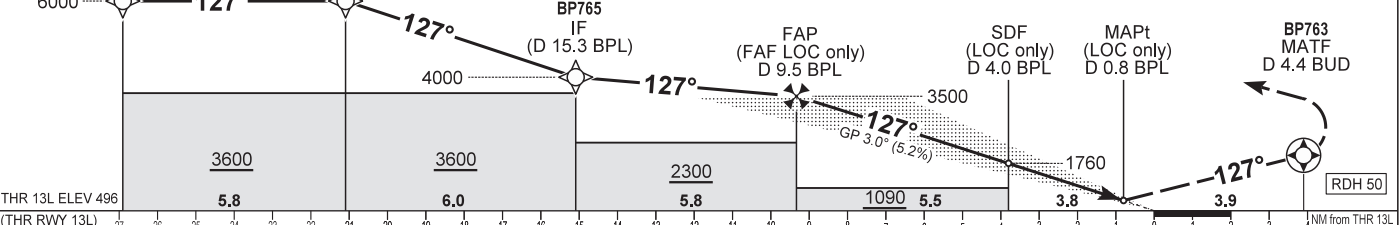
BUDAPEST/LISZT FERENC
ILS or LOC RWY 13L
(ACFT CAT A, B, C, D)



TRANSITION ALTITUDE 10000

MISSED APPROACH (RNAV)
Climb to BP763. At BP763 turn left direct to TPS and continue climb to 3000. Maximum turning speed 185 KIAS. At 3000 enter published holding pattern at TPS VOR/DME.

MISSED APPROACH (CONVENTIONAL)
Climb to 3000 and continue on R 127 BUD outbound. When passing D 4.4 BUD on R 127 BUD turn left direct to TPS VOR/DME. Maximum turning speed 185 KIAS. At 3000 enter published holding pattern at TPS VOR/DME.



| OCA (H) | A | | | | B | | | | C | | | | D | | | |
|---|--|----|----|----|-----------|----|----|----|-----------|----|----|----|-----------|----|----|----|
| | 21 | 22 | 23 | 24 | 21 | 22 | 23 | 24 | 21 | 22 | 23 | 24 | 21 | 22 | 23 | 24 |
| STR. IN APP. | | | | | | | | | | | | | | | | |
| CAT I | 683 (187) | | | | 695 (199) | | | | 704 (208) | | | | 714 (218) | | | |
| | 595 (99) | | | | 612 (116) | | | | 624 (128) | | | | 639 (143) | | | |
| CAT II | | | | | | | | | | | | | | | | |
| | 860 (370) | | | | | | | | | | | | | | | |
| LOC | | | | | | | | | | | | | | | | |
| | 860 (370) | | | | | | | | | | | | | | | |
| CIRCLING | 980 | | | | 1190 | | | | 1310 | | | | 1510 | | | |
| | | | | | | | | | | | | | | | | |
| DME BPL | NM 9.0 8.0 7.0 6.0 5.0 4.0 3.0 2.0 | | | | | | | | | | | | | | | |
| DIST THR / RWY 13L | NM 8.8 7.8 6.8 5.8 4.8 3.8 2.8 1.8 | | | | | | | | | | | | | | | |
| ALTITUDE | ft 3350 3030 2710 2390 2070 1760 1440 1120 | | | | | | | | | | | | | | | |
| Timing not authorized to define the MAPt. | | | | | | | | | | | | | | | | |
| GS | kt 60 90 120 150 180 | | | | | | | | | | | | | | | |
| FAP/FAF - THR 13L (9.3 NM) | min:sec 9:18 6:12 4:39 3:43 3:06 | | | | | | | | | | | | | | | |
| Rate of descent (319 ft/NM) | ft/min 320 480 640 800 960 | | | | | | | | | | | | | | | |

CHANGE: LHSDZLHGD / GODOLLO

AD 2 LHBP INSTRUMENT APPROACH CHART ILS OR LOC 13L

via GIFRA

| PT | WP ID | Role | OverFly | Bearing/ (Len Dur) | Turn Direction | Altitude (FT) | IAS (KT) | VRT ANG | NAV PERF |
|----|-------|------|---------|-----------------------|----------------|---------------|----------|---------|----------|
| IF | GIFRA | IAF | | | | +6000 | | | RNAV1 |
| TF | BP766 | | | 132.1 T/5.8 NM | | +6000 | -230 | | RNAV1 |
| TF | BP765 | IF | | 132.2 T/6.0 NM | | +4000 | -230 | | RNAV1 |
| CF | BP764 | FAF | | 132.2 T/5.8 NM | | @3500 | | | |
| CF | RW13L | LTP | Y | 132.4 T/9.3 NM | | +546 | | -3.0 | |
| TF | BP763 | MATF | Y | 132.4 T/3.9 NM | | | -185 | | RNP APCH |
| DF | TPS | | | | L | @3000 | -185 | | RNP APCH |
| HM | TPS | MAHF | | 251.0 T/1 min | L | @3000 | -230 | | RNP APCH |

via ECMAN

| PT | WP ID | Role | OverFly | Bearing/ (Len Dur) | Turn Direction | Altitude (FT) | IAS (KT) | VRT ANG | NAV PERF |
|----|-------|------|---------|-----------------------|----------------|---------------|----------|---------|----------|
| IF | ECMAN | IAF | | | | +5000 | -230 | | RNAV1 |
| TF | BP765 | IF | | 042.3 T/5.9 NM | | +4000 | -230 | | RNAV1 |
| CF | BP764 | FAF | | 132.2 T/5.8 NM | | @3500 | | | |
| CF | RW13L | LTP | Y | 132.4 T/9.3 NM | | +546 | | -3.0 | |
| TF | BP763 | MATF | Y | 132.4 T/3.9 NM | | | -185 | | RNP APCH |
| DF | TPS | | | | L | @3000 | -185 | | RNP APCH |
| HM | TPS | MAHF | | 251.0 T/1 min | L | @3000 | -230 | | RNP APCH |

via CATUZ

| PT | WP ID | Role | OverFly | Bearing/ (Len Dur) | Turn Direction | Altitude (FT) | IAS (KT) | VRT ANG | NAV PERF |
|----|-------|------|---------|-----------------------|----------------|---------------|----------|---------|----------|
| IF | CATUZ | IAF | | | | +5000 | -230 | | RNAV1 |
| TF | BP765 | IF | | 222.3T/5.0 NM | | +4000 | -230 | | RNAV1 |
| CF | BP764 | FAF | | 132.2 T/5.8 NM | | @3500 | | | |
| CF | RW13L | LTP | Y | 132.4 T/9.3 NM | | +546 | | -3.0 | |
| TF | BP763 | MATF | Y | 132.4 T/3.9 NM | | | -185 | | RNP APCH |
| DF | TPS | | | | L | @3000 | -185 | | RNP APCH |
| HM | TPS | MAHF | | 251.0 T/1 min | L | @3000 | -230 | | RNP APCH |

WAYPOINT COORDINATES SEE: AD 2.22.