

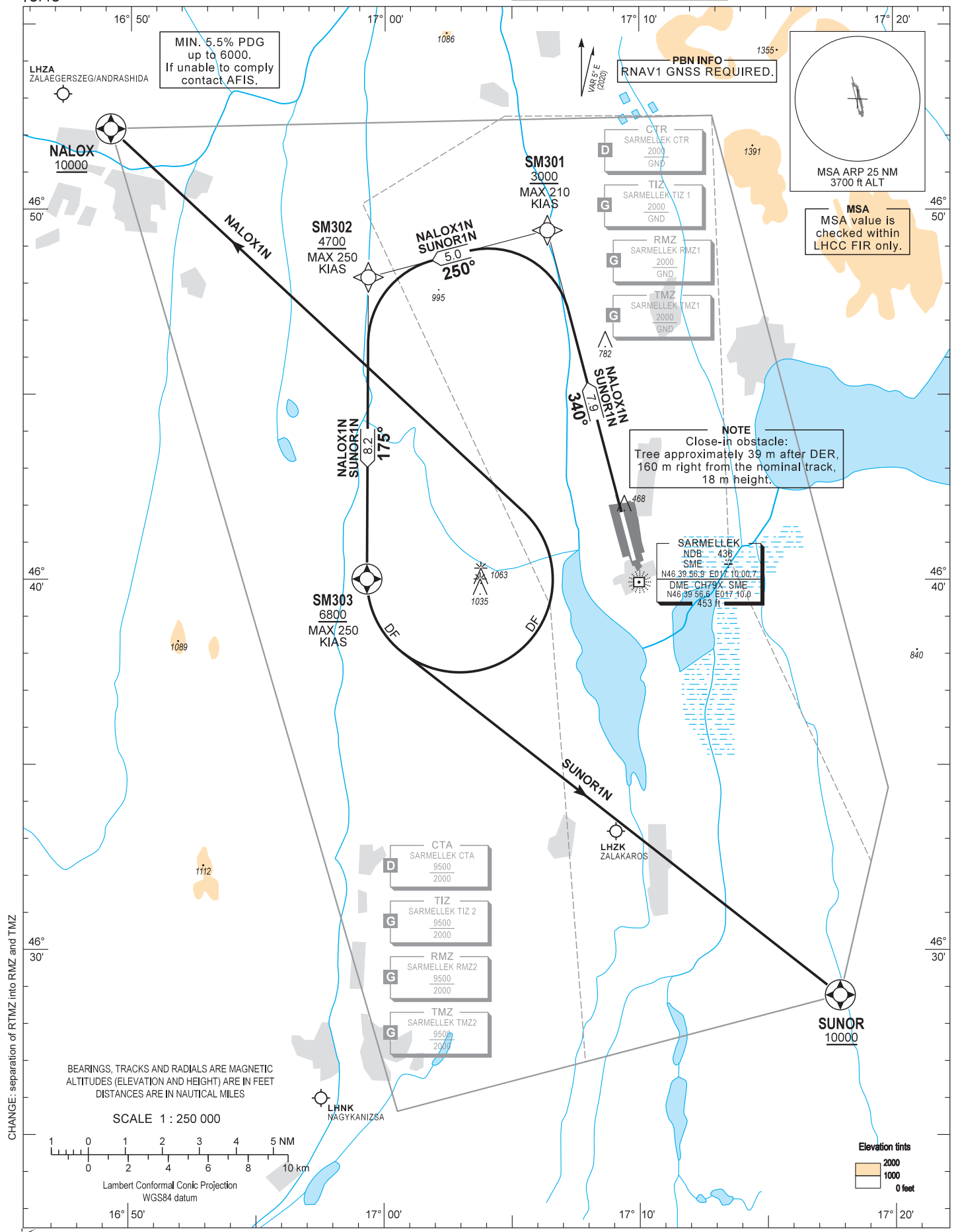
AIP HUNGARY

STANDARD DEPARTURE CHART -
INSTRUMENT (SID) -
ICAO

TRANSITION ALTITUDE
10000

BALATON TOWER 134.585
BALATON INFO 134.585
BUDAPEST INFORMATION (WEST) 125.500

HÉVÍZ/BALATON
RNAV RWY 34
NALOX1N SUNOR1N



AD 2 LHSM STANDARD DEPARTURE CHART INSTRUMENT RWY 34

CLIMBING:

In order to reach exit altitude min. PDG 5.5% up to 6000. After departure climb initially 10000. Further climb only by ATC.

ALTIMETER SETTING:

When passing 9000 change QNH setting for Budapest QNH provided by BALATON INFO or BUDAPEST INFORMATION.

| SID NAME | PROCEDURE | RESTRICTIONS |
|--|---|---|
| NALOX1N (NALOX ONE NOVEMBER DEPARTURE) | Climb to SM301 on course 340°, at or above 3000. To SM302 at or above 4700. To SM303 at or above 6800. Turn left direct to <u>NALOX</u> at or above 10000. | MAX 210 KIAS at SM301. MAX 250 KIAS at SM302, SM303. |
| SUNOR1N (SUNOR ONE NOVEMBER DEPARTURE) | Climb to SM301 on course 340°, at or above 3000. To SM302 at or above 4700. To SM303 at or above 6800. Direct to <u>SUNOR</u> at or above 10000. | |

Recommended navaid: SME NDB.

WAYPOINT COORDINATES

| WP ID | Latitude | Longitude |
|-------|-------------|--------------|
| SM301 | N46 49 27.0 | E017 06 23.4 |
| SM302 | N46 48 10.7 | E016 59 21.0 |
| SM303 | N46 40 01.7 | E016 59 18.4 |
| NALOX | N46 52 10.5 | E016 49 12.3 |
| SUNOR | N46 28 47.0 | E017 17 50.0 |