

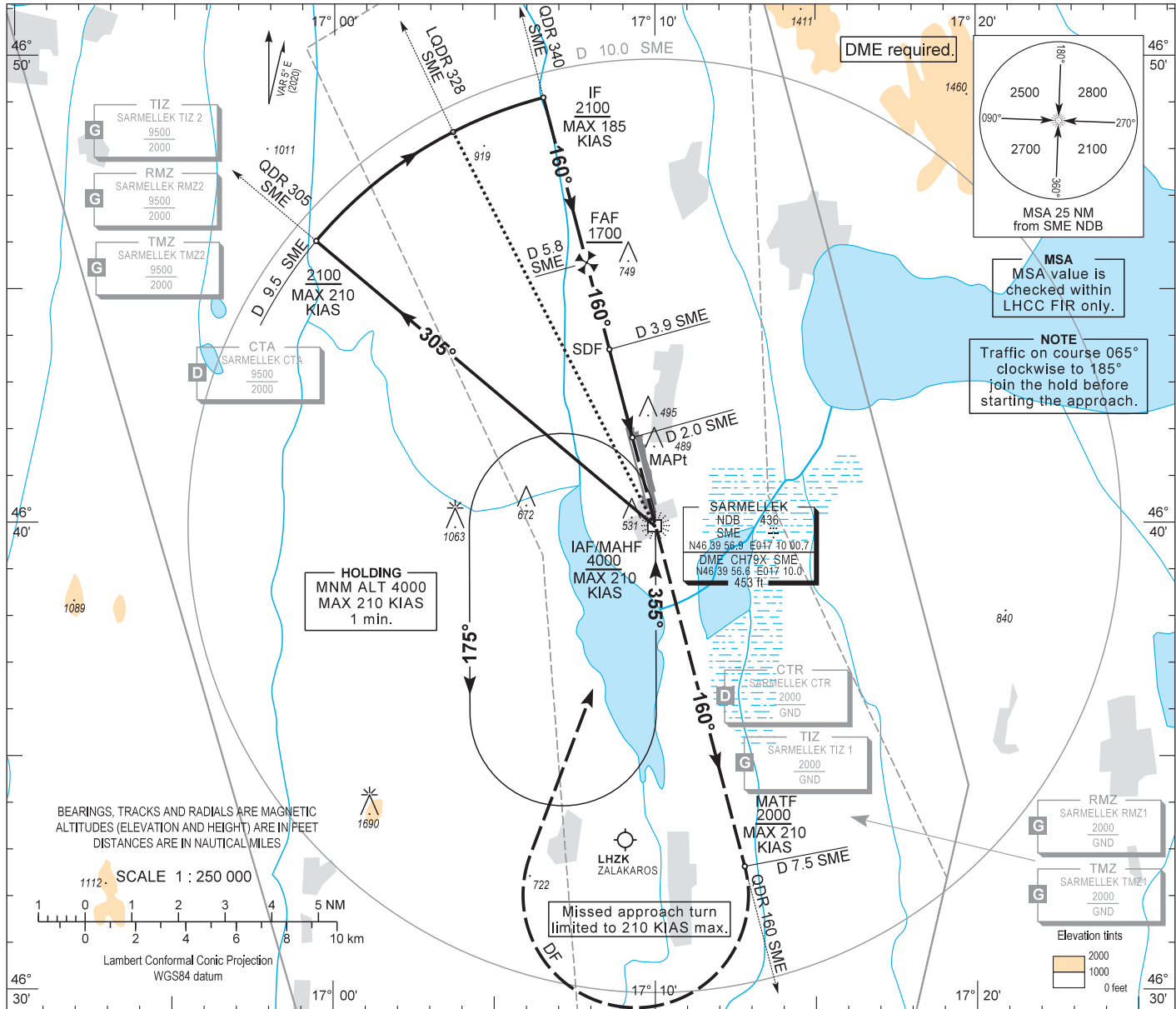
AIP HUNGARY

INSTRUMENT APPROACH CHART - ICAO

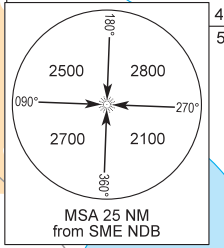
AERODROME ELEV 408
HEIGHTS RELATED TO THR RWY 16 - ELEV 408

BALATON TOWER 134.585
BALATON INFO 134.585
BUDAPEST INFORMATION (WEST) 125.500

HÉVÍZ/BALATON
NDB, RWY 16
(ACFT CAT A, B, C, D)

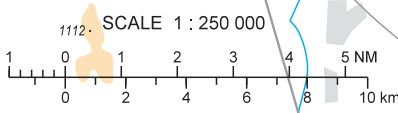


DME required.

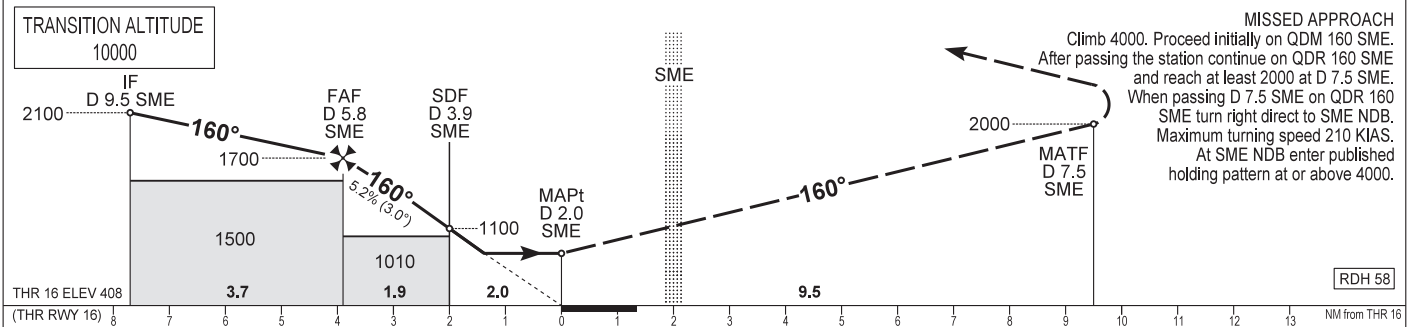


HOLDING
MNM ALT 4000
MAX 210 KIAS
1 min.

BEARINGS, TRACKS AND RADIALS ARE MAGNETIC
ALTITUDES (ELEVATION AND HEIGHT) ARE IN FEET
DISTANCES ARE IN NAUTICAL MILES



CHANGE: aerodrome elevation, separation of RTMZ into RMZ and TMZ



OCA (OCH)		A	B	C	D	DIST THR / RWY 16							
STRAIGHT-IN APPROACH		760 (360)				NM	3.9	3.0	2.0	1.0			
CIRCLING	ft AMSL	840	980	NOT AUTHORIZED	NOT AUTHORIZED	ALTIMETER							
	VIS. m	1900	2800			ft	1700	1420	1100	780			
Timing not authorized to define the MAPt.						GROUND SPEED							
						kt	60	90	120	150	180		
						FAF - MAPt 3.9 NM		min:sec	3:54	2:36	1:57	1:34	1:18
						Rate of descent (319 ft/NM)		ft/min	320	480	640	800	960

AD 2 LHSM INSTRUMENT APPROACH CHART NDB RWY 16

NDB approach procedure:

Initial altitude at or above 4000.
Leave SME NDB on QDR 305 SME and descend 2100.
At D 9.5 SME turn right and join CW D 9.5 SME DME arc.
After crossing LQDR 328 SME leading QDR turn right and intercept QDM 160 SME (final track), descend 1700.
When crossing D 5.8 SME (FAF) descend to published minimum altitude.

Holding procedure:

Holding fix: SME NDB.
Left hand holding pattern.
Maximum speed: 210 KIAS
Inbound track: 355°
Outbound track: 175°
Rate of turn: 3°/sec. or 25° bank angle
(whichever requires lesser bank)
Outbound timing: 1 min
Minimum holding altitude: 4000