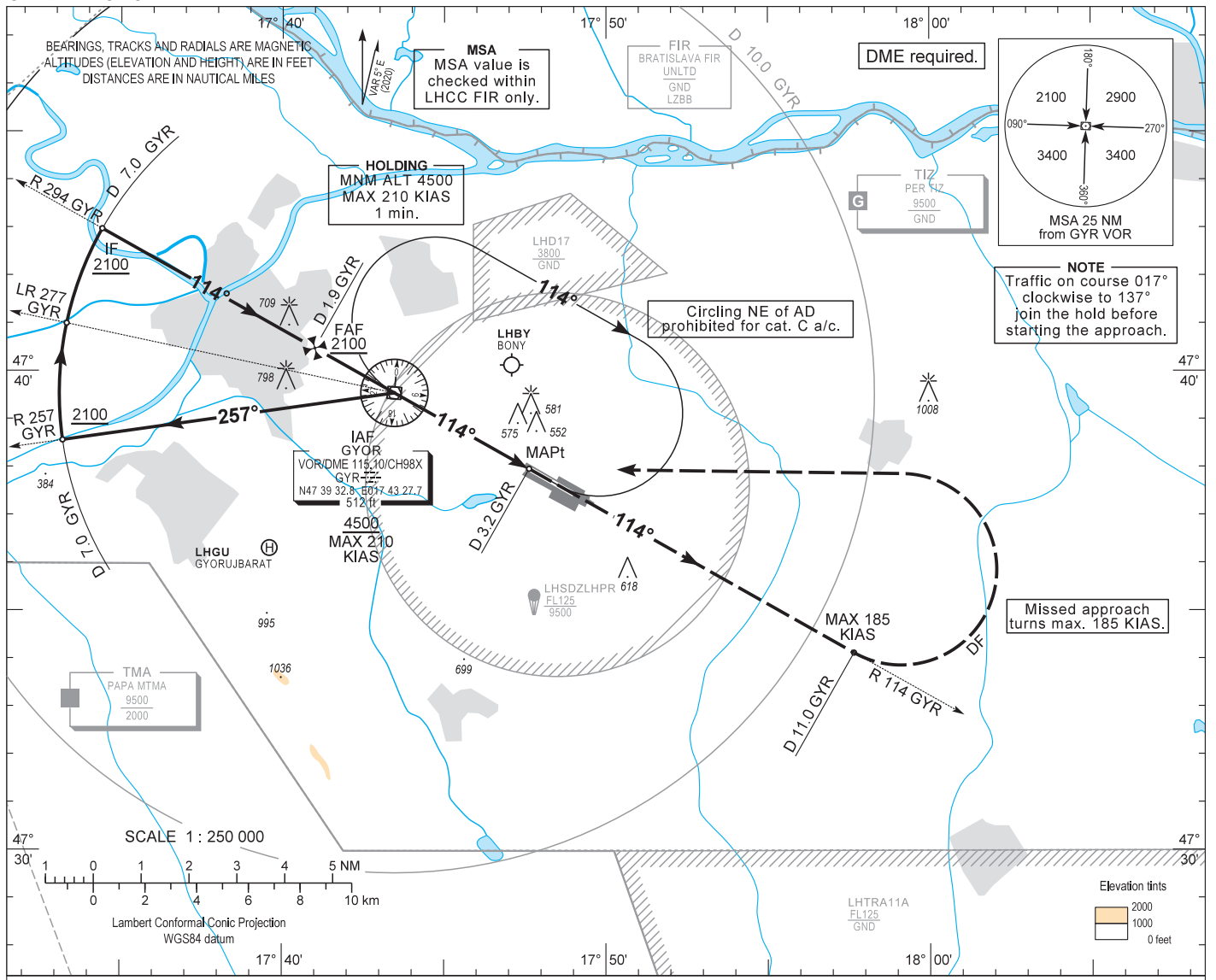


AIP HUNGARY

INSTRUMENT APPROACH CHART - ICAO
AERODROME ELEV 426
HEIGHTS RELATED TO THR RWY 11 - ELEV 415

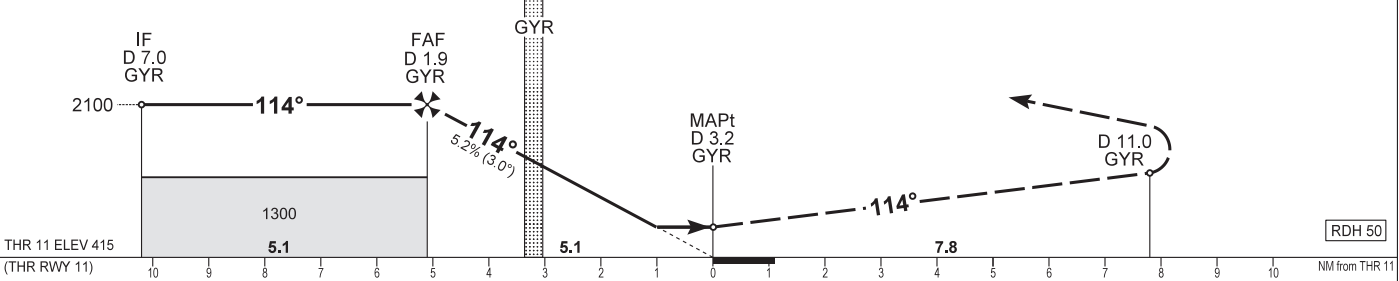
PÉR INFO 129.910
BUDAPEST INFORMATION (WEST) 125.500

GYŐR/PÉR
VOR RWY 11
(ACFT CAT A, B, C)



TRANSITION ALTITUDE
10000

MISSED APPROACH
Climb 4500.
Proceed initially on R 114 GYR.
When passing D 11.0 GYR on R 114 GYR turn left direct to GYR VOR.
Maximum turning speed 185 KIAS.
At GYR VOR enter published holding pattern at or above 4500.



OCA (OCH)	A			B		C		CDFA with GYR DME	NM	1.0		2.0	
										Inbound	0.0	outbound	outbound
STRAIGHT-IN APPROACH				820 (410)				ALT	ft	1800	1480	1170	850
CIRCLING APPROACH	ft AMSL	890	930	1180 SW of AD only				Timing not authorized to define the MAPt.					
	VIS. m	1900	2800	3700				GROUND SPEED	kt	60	90	120	150
FAF - MAPt 5.1 NM								min:sec	5:06	3:24	2:33	2:03	
Rate of descent (319 ft/NM)								ft/min	320	480	640	800	

CHANGE: major revision, magnetic variation, RWY designation number, GYOR VOR station declination

AD 2 LHPR INSTRUMENT APPROACH CHART VOR RWY 11

Initial altitude at or above 4500.
Leave GYR VOR on R 257 GYR and descend 2100.
At D 7.0 GYR turn right and join CW D 7.0 GYR DME arc.
After crossing R 277 GYR leading radial turn right and intercept R 294 GYR inbound for final RWY11.
When crossing D 1.9 GYR (FAF) descend to published minimum altitude.

Holding procedure:

Holding fix: GYR VOR

Right hand holding pattern.

Maximum speed:	210 KIAS
Inbound track:	294°
Outbound track:	114°
Rate of turn:	3°/sec. or 25° bank angle (whichever requires lesser bank)
Outbound timing:	1 min.
Minimum holding altitude:	4500
Maximum holding altitude:	8500