

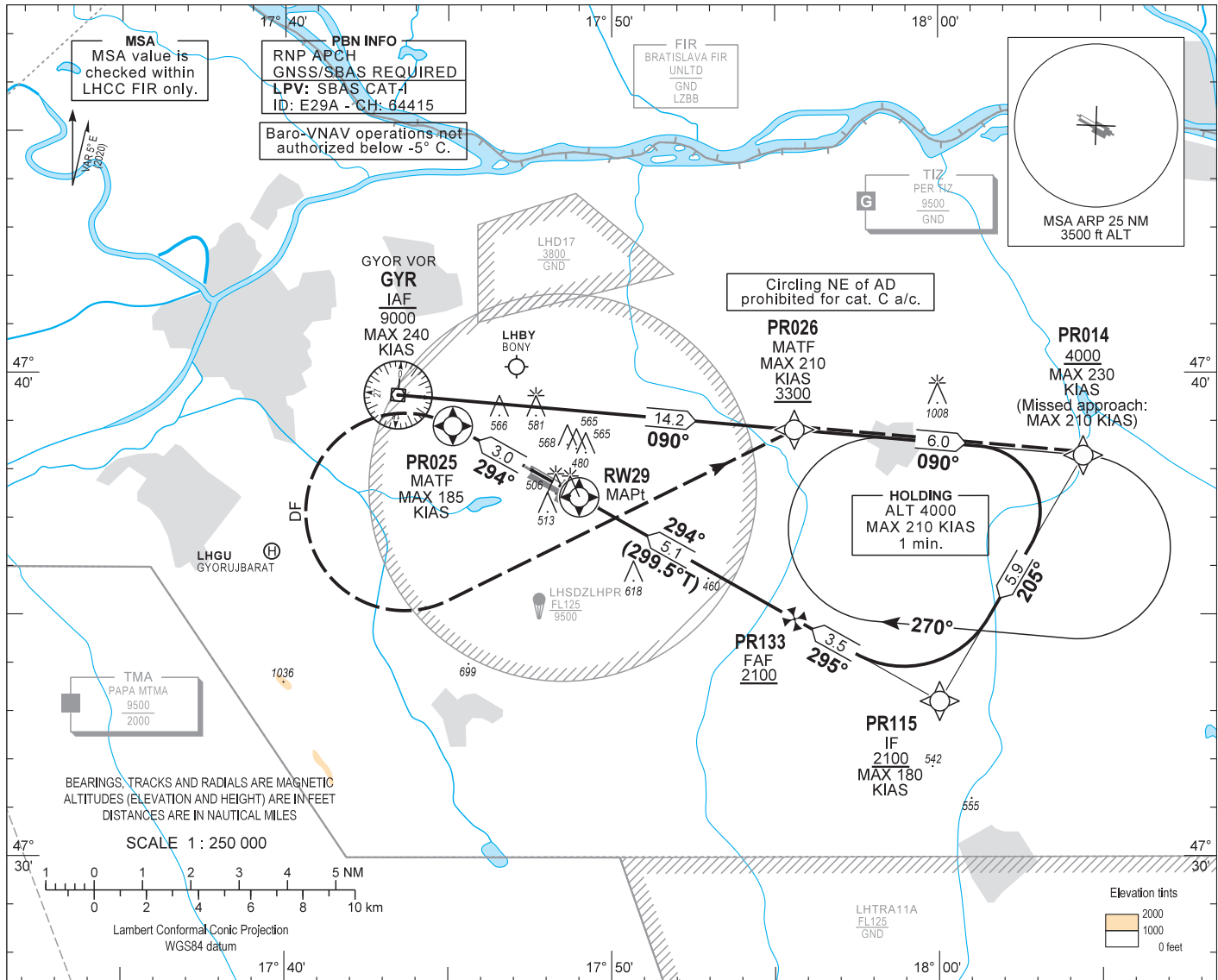
AIP HUNGARY

INSTRUMENT
APPROACH
CHART - ICAO

AERODROME ELEV 426
HEIGHTS RELATED TO
THR RWY 29 - ELEV 426

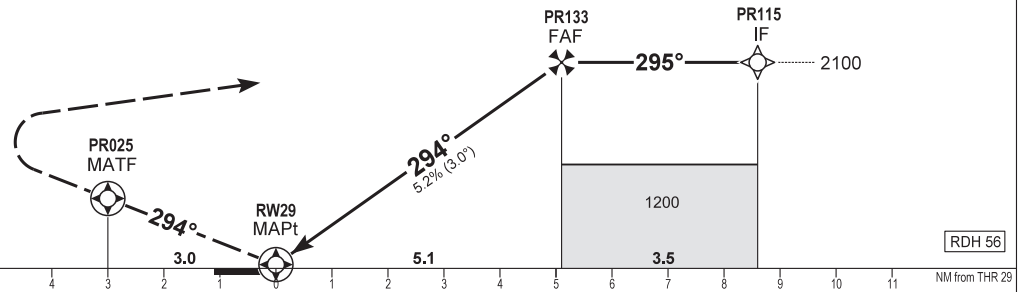
PÉR INFO 129.910
BUDAPEST INFORMATION (WEST) 125.500

GYŐR/PÉR
RNP RWY 29
(ACFT CAT A, B, C)



MISSED APPROACH
Climb to PR025.
Turn left direct to PR026 at or above 3300.
Proceed to PR014, and enter holding at or above 4000.
Maximum turning speed: 185 KIAS at PR025, 210 KIAS at PR026.

TRANSITION ALTITUDE
10000



| OCA (OCH) | | A | B | C | DIST THR / RW29 | | | | | | |
|----------------------|-------------|-----------|-----------|------------------------------|---|---------|-----|------|------|------|------|
| | | | | | NM | 5.0 | 4.0 | 3.0 | 2.0 | 1.0 | |
| STRAIGHT-IN APPROACH | LNAV | 790 (370) | | | ALTITUDE | | | | | | |
| | LNAV / VNAV | 656 (230) | 665 (239) | 682 (256) | ft | | | | | | |
| | LPV | 637 (211) | 649 (223) | 658 (232) | 2070 1760 1440 1120 800 | | | | | | |
| CIRCLING APPROACH | ft AMSL | 890 | 930 | 1180 <i>SW of AD only</i> | Timing not authorized to define the MAPt. | | | | | | |
| | VIS. m | 1900 | 2800 | 3700 | GROUND SPEED | | | | | | |
| | | | | | kt | | 60 | 90 | 120 | 150 | |
| | | | | FAF - RW29 5.1 NM | | min:sec | | 5:06 | 3:24 | 2:33 | 2:03 |
| | | | | Rate of descent (319 ft/NM) | | ft/min | | 320 | 480 | 640 | 800 |

CHANGE: major revision, magnetic variation, RWY designation number, GYOR VOR station declination

AD 2 LHPR INSTRUMENT APPROACH CHART RNP RWY 29

| PT | WP ID | Role | OverFly | Bearing/ (Len Dur) | Turn Direction | Altitude (FT) | IAS (KT) | VRT ANG | NAV PERF |
|----|-------|------|---------|-----------------------|----------------|---------------|----------|---------|----------|
| IF | GYR | IAF | | | | -9000 | -240 | | RNP APCH |
| TF | PR014 | | | 095.2 T/14.2 NM | | +4000 | -230 | | RNP APCH |
| TF | PR115 | IF | | 210.4 T/5.9 NM | | +2100 | -180 | | RNP APCH |
| TF | PR133 | FAF | | 299.5 T/3.5 NM | | +2100 | | | RNP APCH |
| TF | RW29 | MAPt | Y | 299.5 T/5.1 NM | | +482 | | -3.0° | RNP APCH |
| TF | PR025 | MATF | Y | 299.4 T/3.0 NM | | | -185 | | RNP APCH |
| DF | PR026 | MATF | | | L | +3300 | -210 | | RNP APCH |
| TF | PR014 | | | 095.2 T/6.0 NM | R | +4000 | -210 | | RNP APCH |
| HM | PR014 | MAHF | | 095.2 T/1 min | R | +4000 | -210 | | RNP APCH |

SBAS FAS Data Block Coding Data

FAS-DB (CRC wrapped data)

| | |
|--------------------------------------|--|
| Operation type | 0 |
| SBAS Provider | 1 |
| Airport identifier | LHPR |
| Runway | 29 |
| Approach Performance Designator | 0 |
| Route indicator | |
| Reference Path Data Selector | 0 |
| Reference Path Identifier | E29A |
| LTP/FTP Latitude | 473726.0200N |
| LTP/FTP Longitude | 0174900.3000E |
| LTP/FTP Ellipsoidal Height (m) | 174.1 |
| FPAP Latitude | 473758.3400N |
| FPAP Longitude | 0174735.6300E |
| Threshold Crossing Height | 17.1 |
| TCH Units Selector | 1 |
| Glidepath Angle (degrees) | 3.00 |
| Course Width (m) | 105 |
| Length Offset (m) | 0 |
| HAL (m) | 40 |
| VAL (m) | 35 |
| Data Block | 10 12 10 08 0C 1D 00 00 01 39 32 05 08 1E 70 14 18 68 A5 07 CD 1A 80 FC 00 84 6A FD 56 81 2C 01 64 00 C8 AF 6C 80 8E B4 |
| Calculated CRC Value | 6C808EB4 |
| FAS-DB (not CRC wrapped data) | |
| ICAO Code | LH |
| LTP/FTP Orthometric Height (m) | 129.8 |

WAYPOINT COORDINATES

| WP ID | Latitude | Longitude |
|-------|-------------|--------------|
| GYR | N47 39 32.8 | E017 43 27.7 |
| PR014 | N47 38 17.4 | E018 04 25.7 |
| PR115 | N47 33 12.7 | E018 00 01.4 |
| PR133 | N47 34 56.0 | E017 55 32.4 |
| RW29 | N47 37 26.0 | E017 49 00.3 |
| PR025 | N47 38 54.3 | E017 45 08.2 |
| PR026 | N47 38 49.6 | E017 55 35.4 |

Holding procedure

Holding fix: PR014
 Right hand holding pattern.
 Maximum speed: 210 KIAS
 Inbound track: 090°
 Outbound track: 270°
 Rate of turn: 3°/sec. or 25° bank angle (whichever requires lesser bank)
 Outbound times: 1 min.
 Minimum holding altitude: 4000
 Maximum holding altitude: 8500
 Entry: Sector 1 (parallel) and Sector 2 (offset) entries prohibited