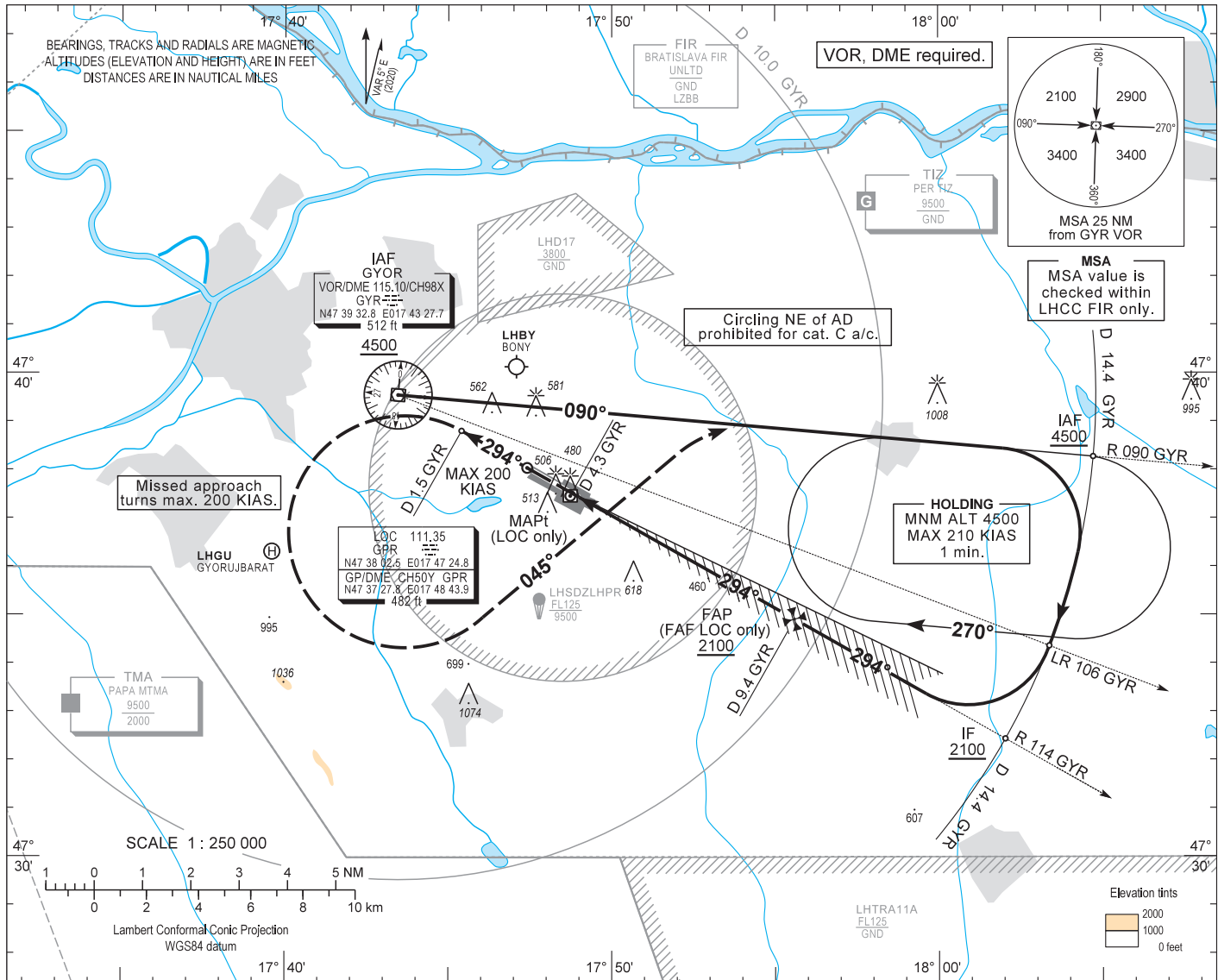


AIP HUNGARY

INSTRUMENT APPROACH CHART - ICAO
AERODROME ELEV 426
HEIGHTS RELATED TO THR RWY 29 - ELEV 426

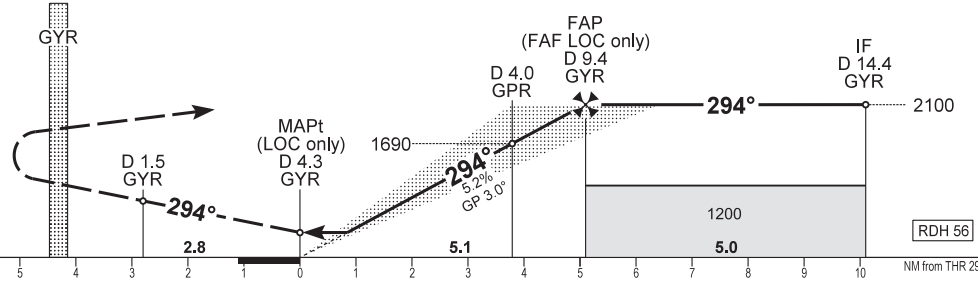
PÉR INFO 129.910
BUDAPEST INFORMATION (WEST) 125.500

GYŐR/PÉR
ILS or LOC RWY 29
(ACFT CAT A, B, C)



MISSED APPROACH
Climb 4500.
Proceed initially on R 114 GYR inbound.
When passing D 1.5 GYR turn left heading 045° to intercept R 090 GYR.
Maximum turning speed 200 KIAS.
Fly on R 090 GYR and at D 14.4 GYR enter published holding pattern at or above 4500.

TRANSITION ALTITUDE
10000



| OCA (OCH) | | A | B | C | DIST with GYR DME | | | | | |
|----------------------|--------------------|-----------|-----------|-----------------------|---|---------|------|------|------|------|
| STRAIGHT-IN APPROACH | Cat. I, Press. ALT | 637 (211) | 649 (223) | 658 (232) | NM | 9.0 | 8.0 | 7.0 | 6.0 | |
| | LOC only | 790 (370) | | | NM | 4.9 | 3.9 | 2.9 | 1.9 | |
| CIRCLING APPROACH | ft AMSL | 890 | 930 | 1180 SW of AD only | ft | 1980 | 1660 | 1340 | 1020 | |
| | VIS. m | 1900 | 2800 | 3700 | Timing not authorized to define the MAPt. | | | | | |
| | | | | | GROUND SPEED | kt | 60 | 90 | 120 | 150 |
| | | | | | FAP - MAPt 5.1 NM | min:sec | 5:06 | 3:24 | 2:33 | 2:03 |
| | | | | | Rate of descent (319 ft/NM) | ft/min | 320 | 480 | 640 | 800 |

CHANGE: major revision, magnetic variation, GYOR VOR station declination

AD 2 LHPR INSTRUMENT APPROACH CHART ILS OR LOC RWY 29

ILS approach procedure:

Initial altitude at or above 4500.

Leave GYR VOR on R 090 GYR. At D 14.4 GYR turn right and join CW D 14.4 GYR DME arc.

After crossing R 106 GYR leading radial turn right and intercept R 114 GYR inbound (final track), to D 14.4 GYR (IF) descend 2100.

When crossing D 9.4 GYR (FAF) descend to published minimum altitude.

Holding procedure:

Holding fix: GYR R 090 / D 14.4

Right hand holding pattern.

Maximum speed: 210 KIAS

Inbound track: 090°

Outbound track: 270°

Outbound timing: 1 min.

Minimum holding altitude: 4500

Maximum holding altitude: 8500

Rate of turn: 3°/sec. or 25° bank angle
(whichever requires lesser bank)

Entry: Sector 1 (parallel) and Sector 2 (offset) entries prohibited