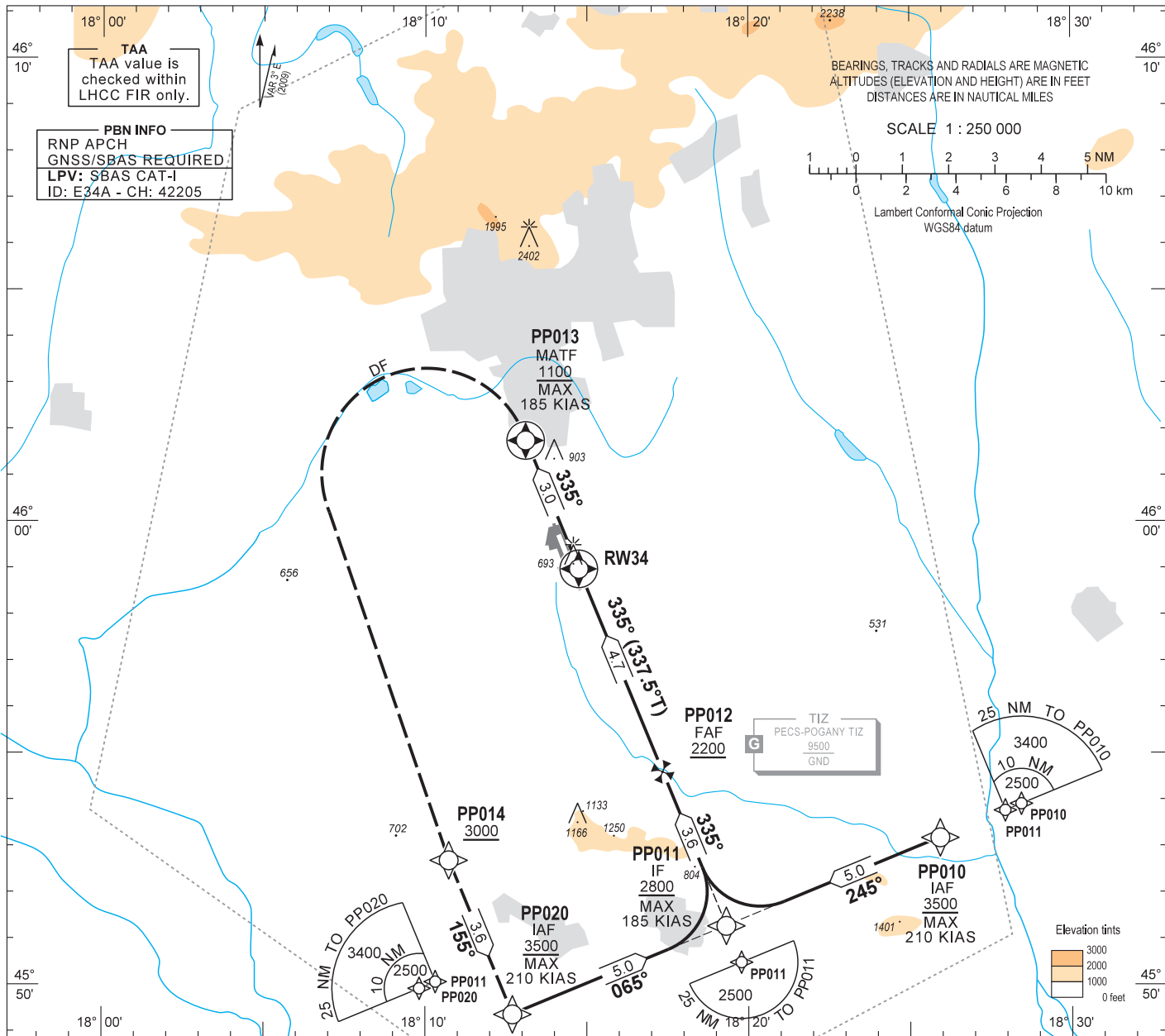


AIP HUNGARY

INSTRUMENT APPROACH CHART - ICAO
AERODROME ELEV 651
HEIGHTS RELATED TO THR RWY 34 - ELEV 640

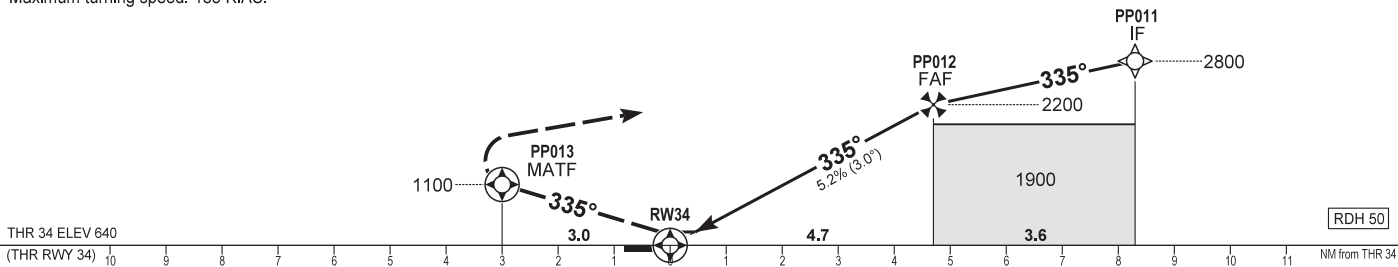
POGÁNY INFO 126.915
BUDAPEST INFORMATION (WEST) 125.500

PÉCS/POGÁNY
RNP RWY 34 (LPV only)
(ACFT CAT A, B, C, D)



MISSED APPROACH
Climb to PP013 at or above 1100.
Turn left direct to PP014 at or above 3000.
Proceed to PP020 at or above 3500.
Maximum turning speed: 185 KIAS.

TRANSITION ALTITUDE
10000



| OCA (OCH) | | A | B | C | D | DIST THR / RWY34 | | | | |
|-------------------------------|---------|-----------|-----------|-----------|-----------|------------------|------|------|------|------|
| LPV | | 886 (246) | 898 (258) | 906 (266) | 917 (277) | NM | 4.0 | 3.0 | 2.0 | 1.0 |
| CIRCLING APPROACH | ft AMSL | 1210 | 1210 | 1310 | 1510 | ALTITUDE | | | | |
| | VIS. m | 1900 | 2800 | 3700 | 4600 | ft | 1960 | 1650 | 1330 | 1010 |
| GROUND SPEED | | kt | 60 | 90 | 120 | 150 | 180 | | | |
| FAF - RWY34 4.7 NM | | min:sec | 4:42 | 3:08 | 2:21 | 1:53 | 1:34 | | | |
| Rate of descent (318.4 ft/NM) | | ft/min | 320 | 480 | 640 | 800 | 960 | | | |

AD 2 LHPP INSTRUMENT APPROACH CHART RNP RWY 34

via PP020

| PT | WP ID | Role | OverFly | Bearing/ (Len Dur) | Turn Direction | Altitude (FT) | IAS (KT) | VRT ANG | NAV PERF |
|----|-------|------|---------|-----------------------|----------------|---------------|----------|---------|----------|
| IF | PP020 | IAF | | | | +3500 | -210 | | RNP APCH |
| TF | PP011 | IF | | 067.6 T/5.0 NM | | +2800 | -185 | | RNP APCH |
| TF | PP012 | FAF | | 337.6 T/3.6 NM | | +2200 | | | RNP APCH |
| TF | RW34 | LTP | Y | 337.5 T/4.7 NM | | +690 | | -3.0° | RNP APCH |
| TF | PP013 | MATF | Y | 337.5 T/3.0 NM | | +1100 | -185 | | RNP APCH |
| DF | PP014 | | | | L | +3000 | -185 | | RNP APCH |
| TF | PP020 | | | 157.5 T/3.6 NM | | +3500 | | | RNP APCH |

via PP010

| PT | WP ID | Role | OverFly | Bearing/ (Len Dur) | Turn Direction | Altitude (FT) | IAS (KT) | VRT ANG | NAV PERF |
|----|-------|------|---------|-----------------------|----------------|---------------|----------|---------|----------|
| IF | PP010 | IAF | | | | +3500 | -210 | | RNP APCH |
| TF | PP011 | IF | | 247.6 T/5.0 NM | | +2800 | -185 | | RNP APCH |
| TF | PP012 | FAF | | 337.6 T/3.6 NM | | +2200 | | | RNP APCH |
| TF | RW34 | LTP | Y | 337.5 T/4.7 NM | | +690 | | -3.0° | RNP APCH |
| TF | PP013 | MATF | Y | 337.5 T/3.0 NM | | +1100 | -185 | | RNP APCH |
| DF | PP014 | | | | L | +3000 | -185 | | RNP APCH |
| TF | PP020 | | | 157.5 T/3.6 NM | | +3500 | | | RNP APCH |

SBAS FAS Data Block Coding Data

FAS-DB (CRC wrapped data)

| | |
|--------------------------------------|--|
| Operation type | 0 |
| SBAS Provider | 1 |
| Airport identifier | LHPP |
| Runway | 34 |
| Approach Performance Designator | 0 |
| Route indicator | |
| Reference Path Data Selector | 0 |
| Reference Path Identifier | E34A |
| LTP/FTP Latitude | 455858.7400N |
| LTP/FTP Longitude | 0181444.9500E |
| LTP/FTP Ellipsoidal Height (m) | 240.0 |
| FPAP Latitude | 455949.4700N |
| FPAP Longitude | 0181414.8480E |
| Threshold Crossing Height | 50 |
| TCH Units Selector | 0 |
| Glidepath Angle (degrees) | 3.00 |
| Course Width (m) | 105.00 |
| Length Offset (m) | 200 |
| HAL (m) | 40.0 |
| VAL (m) | 35.0 |
| Data Block | 10 10 10 08 0C 22 00 00 01 34 33 05 68 D7 BB 13 AC 8B D4 07 60 1D 54 8C 01 D4 14 FF F4 01 2C 01 64 19 C8 AF CA ED D3 12 |
| Calculated CRC Value | CAEDD312 |
| FAS-DB (not CRC wrapped data) | |
| ICAO Code | LH |
| LTP/FTP Orthometric Height (m) | 195.2 |

WAYPOINT COORDINATES

| WP ID | Latitude | Longitude |
|-------|-------------|--------------|
| PP020 | N45 49 21.7 | E018 12 42.0 |
| PP010 | N45 53 10.5 | E018 25 55.6 |
| PP011 | N45 51 16.3 | E018 19 18.6 |
| PP012 | N45 54 35.9 | E018 17 20.6 |
| RW34 | N45 58 58.7 | E018 14 45.0 |
| PP013 | N46 01 45.0 | E018 13 06.2 |
| PP014 | N45 52 41.2 | E018 10 43.8 |