

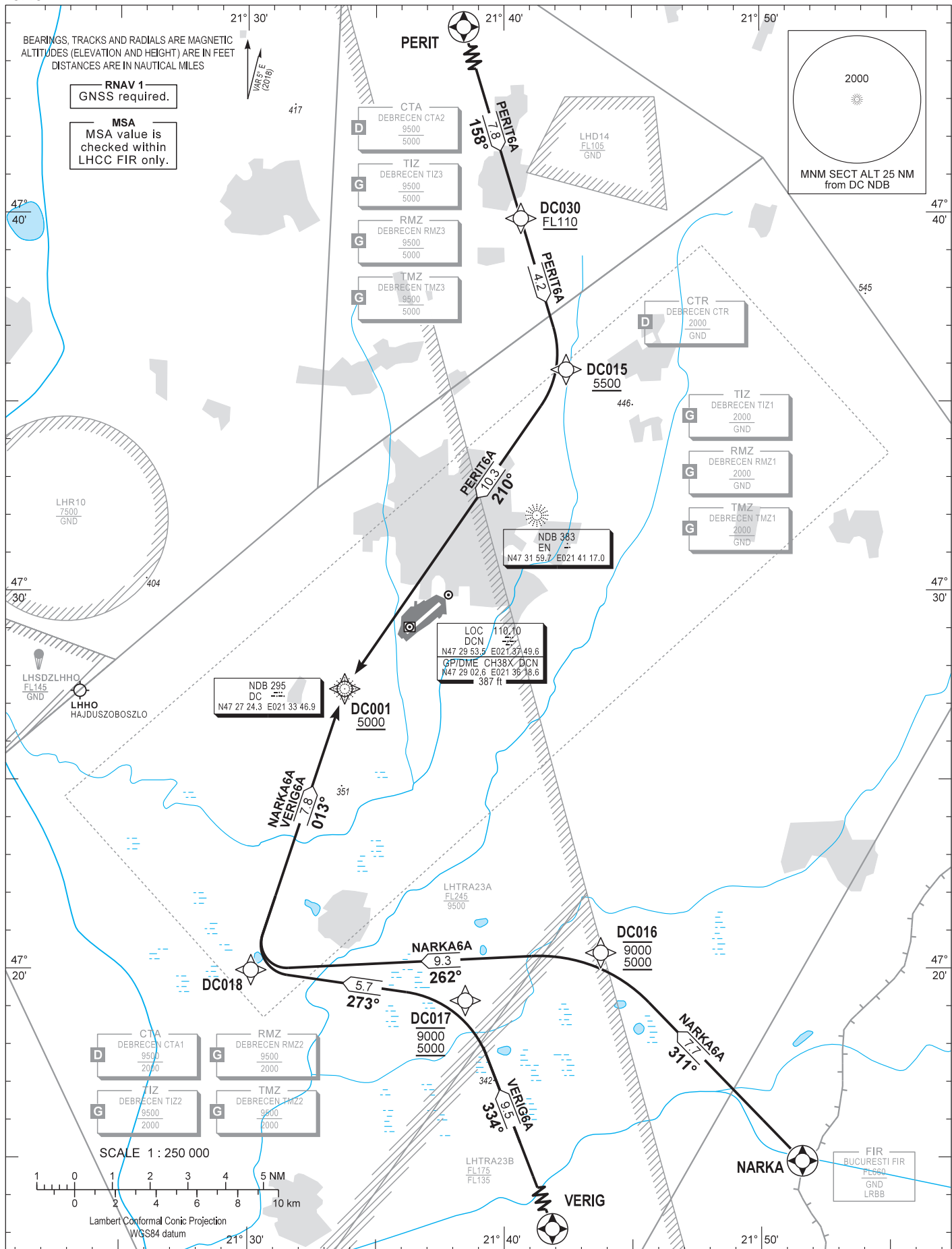
AIP HUNGARY

STANDARD ARRIVAL CHART - INSTRUMENT (STAR) - ICAO

TRANSITION ALTITUDE 10000

DEBRECEN TOWER	125.910
DEBRECEN INFO	125.910
BUDAPEST INFORMATION (EAST)	133.000

DEBRECEN
RNAV RWY 04R / 22L
NARKA6A PERIT6A VERIG6A



CHANGE: separation of RTMZ into RMZ and TMZ

AD 2 LHDC STANDARD ARRIVAL CHART INSTRUMENT RWY 04R / 22L

NAME	PROCEDURE	RESTRICTIONS	DESCENT	R/T FAILURE
PERIT6A	To DC030 at or above FL110. To DC015 at or above 5500. To DC001 at or above 5000.	Max 250 KIAS	When passing a fix, facility or waypoint, descent have to be initiated without delay to the lowest authorized level (depicted on the chart or by ATC) of the following segment.	If an arriving controlled aircraft experiencing R/T failure, it shall follow the STAR to 5000, fly a standard entry into the DC holding and 1 more holding pattern, after which a basic instrument approach procedure shall be initiated according to the known wind direction.
NARKA6A	To DC016 between 5000 and 9000. To DC018, to DC001 at or above 5000.			
VERIG6A	To DC017 between 5000 and 9000. To DC018, to DC001 at or above 5000.			

**WAYPOINT COORDINATES
AD 2-LHDC-RNAV_(GNSS) STAR**

WAYPOINT	LATITUDE	LONGITUDE	WAYPOINT TYPE
NARKA	N47 14 54.5	E021 51 35.8	FLYOVER
PERIT	N47 47 18.0	E021 37 22.0	FLYOVER
VERIG	N47 10 20.0	E021 43 29.0	FLYOVER
DC001	N47 27 24.2	E021 33 46.9	FLY-BY
DC015	N47 35 51.1	E021 42 25.6	FLY-BY
DC016	N47 20 25.3	E021 43 45.6	FLY-BY
DC017	N47 19 09.5	E021 38 29.2	FLY-BY
DC018	N47 19 58.2	E021 30 08.1	FLY-BY
DC030	N47 39 51.1	E021 40 39.8	FLY-BY