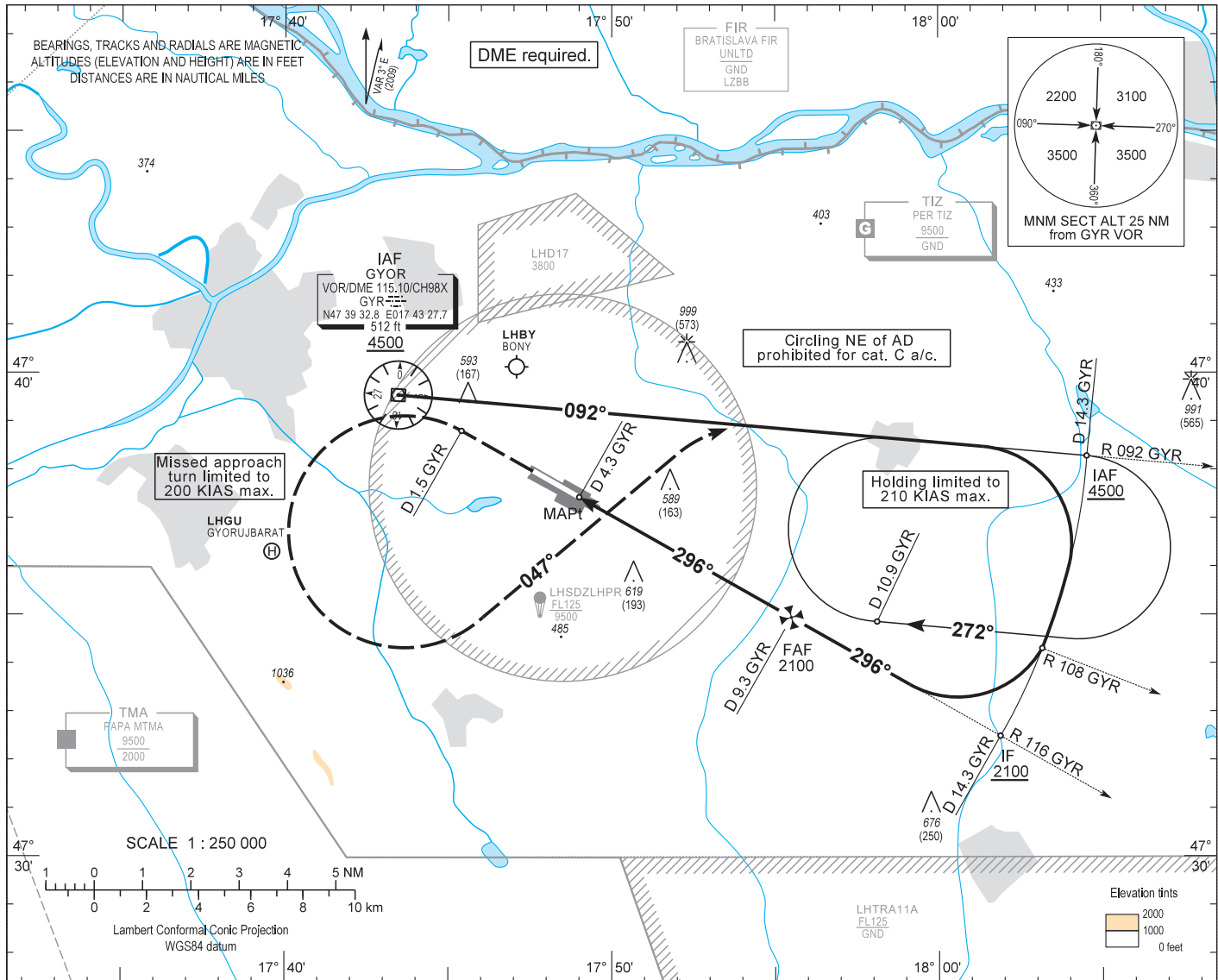


AIP HUNGARY

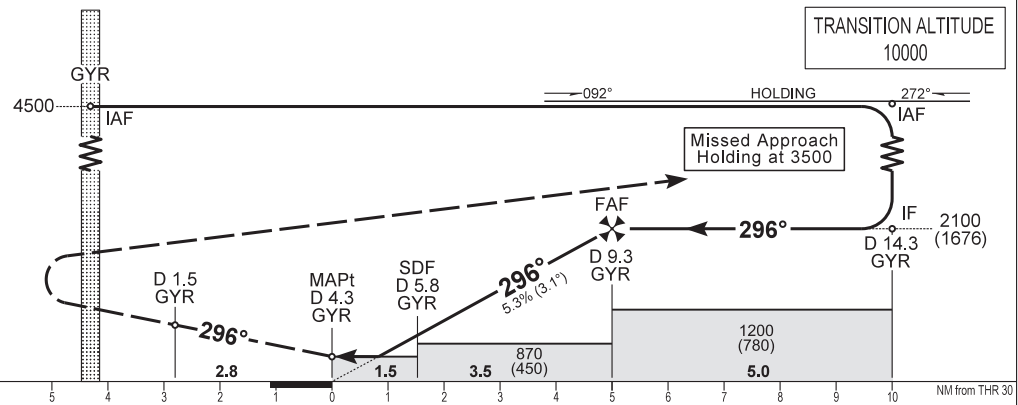
INSTRUMENT APPROACH CHART - ICAO
AERODROME ELEV 426
HEIGHTS RELATED TO THR RWY 30 - ELEV 426

PÉR INFO 129.910
BUDAPEST INFORMATION (WEST) 125.500

GYŐR/PÉR
VOR RWY 30
(ACFT CAT A, B, C)



MISSED APPROACH
Continuous climb to 3500.
Straight ahead, then at D 1.5 GYR turn left (200 KIAS max.) to track 047° to intercept R 092 GYR outbound and hold.



(THR RWY 30)		10	9	8	7	6	5	4	3	2	1	0	1	2	3	4	5	6	7	8	9	10
OCA (H)		A		B		C																
STRAIGHT-IN APPROACH		VOR		790 (370)																		
CIRCLING APPROACH		ft AMSL		890 (470)	930 (510)	1140 (720)	SW of AD only															
		VIS. m		1900	2800	3700																

CDA with GYR DME	NM	9.0	8.0	7.0	6.0
ALT	ft	2010	1680	1360	1030
(HGT)	ft	(1580)	(1260)	(940)	(610)

Timing not authorized to define the MAPt.

GROUND SPEED	kt	70	100	130	160
FAF - MAPt 5.0 NM	MIN:sec	4:17	3:00	2:18	1:53
VSP	ft/min	380	540	710	870

AD 2 LHPR INSTRUMENT APPROACH CHART VOR RWY 30

FIX	LATITUDE	LONGITUDE	FIX FORMATION
IAF	N47 39 32.8	E017 43 27.7	GYR VOR
IAF	N47 38 17.1	E018 04 32.0	R 092 GYR VOR / D 14.3 GYR DME
IF	N47 32 30.2	E018 01 51.4	R 116 GYR VOR / D 14.3 GYR DME
FAF	N47 34 58.2	E017 55 26.1	R 116 GYR VOR / D 9.3 GYR DME
SDF	N47 36 41.9	E017 50 55.8	R 116 GYR VOR / D 5.8 GYR DME
MAPt	N47 37 25.9	E017 49 00.0	R 116 GYR VOR / D 4.3 GYR DME
MA TP	N47 38 48.4	E017 45 23.7	R 116 GYR VOR / D 1.5 GYR DME

Approach from GYR VOR:

Initial alt: 4500.
 Leave GYR VOR on R 092. Join D 14.3 GYR DME arc CW.
 Descend to altitude 2100.
 After passing R 108 GYR VOR leading radial turn right and intercept R 116 GYR VOR inbound for final RWY 30.
 At D 9.3 GYR VOR descend 870.
 After passing step down fix at D 5.8 GYR VOR descend 790.

Approach holding procedure:

Holding fix: GYR VOR R 092 / D 14.3.
 Maximum speed: 210 KIAS
 Inbound track: 092°
 Outbound track: 272°
 Turns: Right
 Outbound timing: 1 min.
 Minimum holding altitude: 4500 (3500 for Missed Approach)
 MOCA: 2000
 Entry: Sector 1 (parallel) and Sector 2 (offset) entries prohibited

Final approach descent: 3.06°