

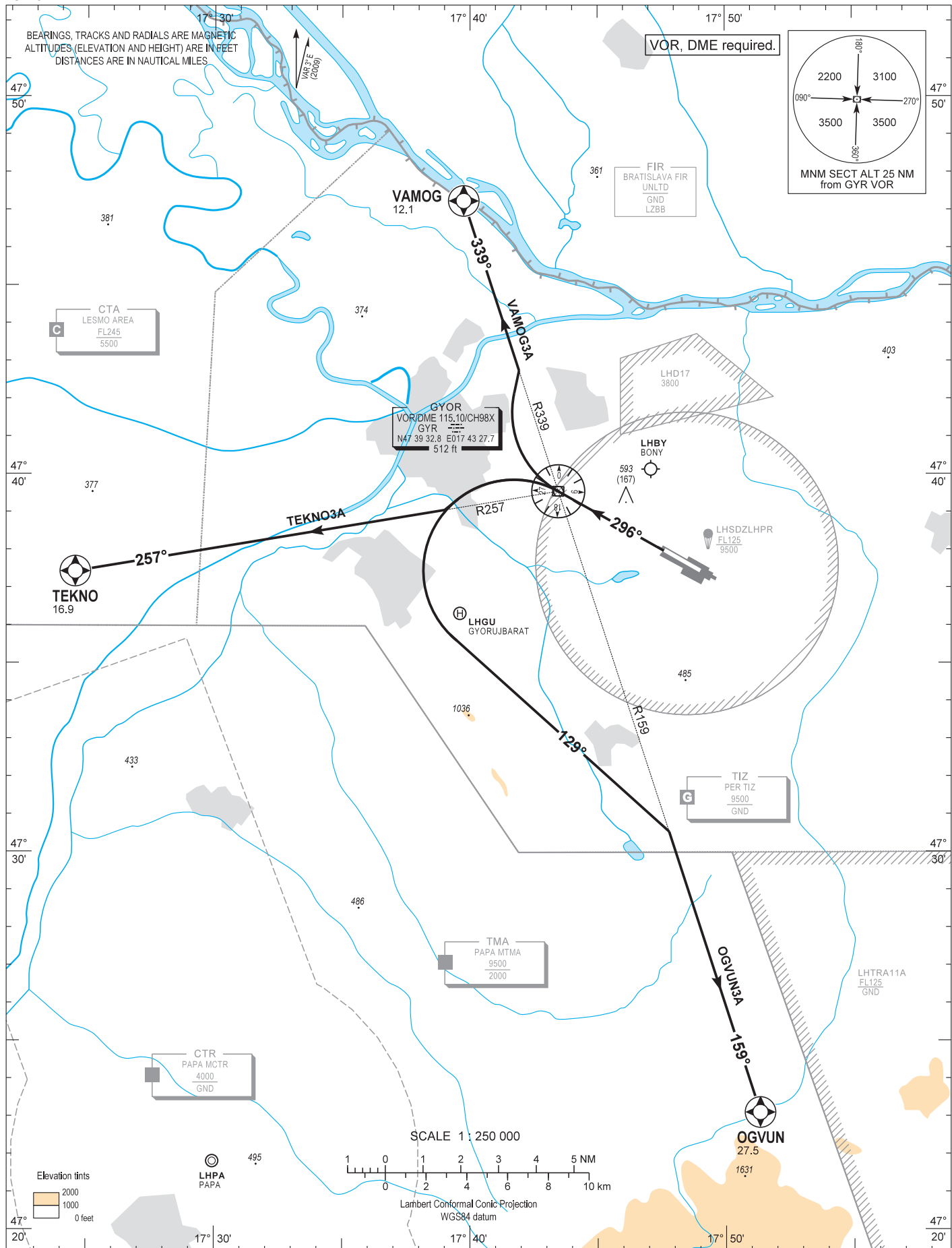
AIP HUNGARY

STANDARD DEPARTURE CHART -
INSTRUMENT (SID) -
ICAO

TRANSITION ALTITUDE
10000

PÉR INFO 129.910
BUDAPEST INFORMATION (WEST) 125.500

GYÖR/PÉR
RWY 30
OGVUN3A TEKNO3A VAMOG3A



AD 2 LHPR STANDARD DEPARTURE CHART INSTRUMENT RWY 30

NAME (length)	PROCEDURE	CLIMBING
VAMOG3A (12.1)	After departure proceed to GYR. At GYR turn right to intercept radial 339° outbound to VAMOG. D 12.1 GYR DME.	Climb initially 9000 AMSL. Further climb only by ATC.
TEKNO3A (16.9)	After departure proceed to GYR. At GYR turn left to intercept radial 257° outbound to TEKNO. D 16.9 GYR DME.	
OGVUN3A (27.5)	After departure proceed to GYR. At GYR turn left to track 129° to intercept radial 159° outbound to OGVUN. D 27.5 GYR DME.	