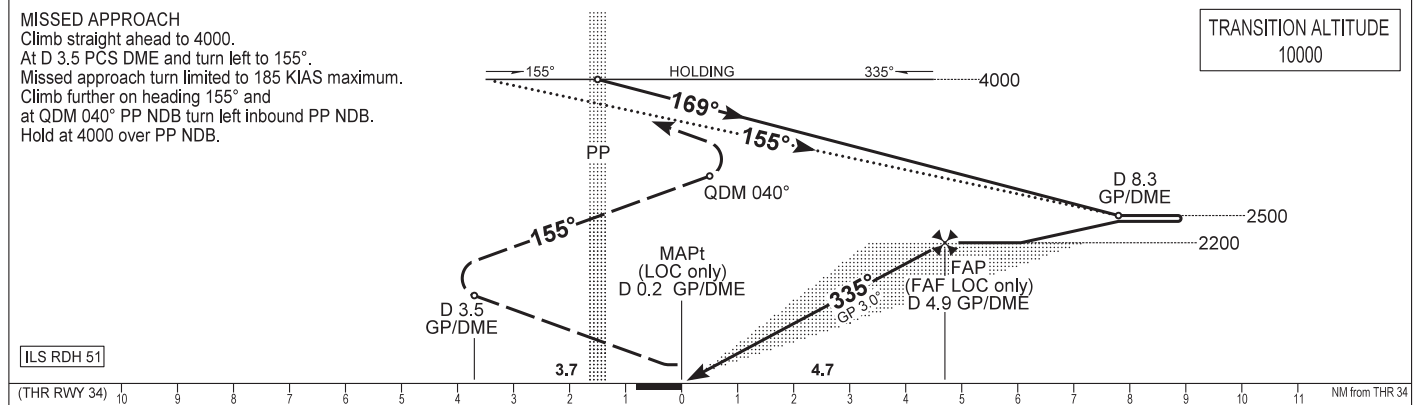
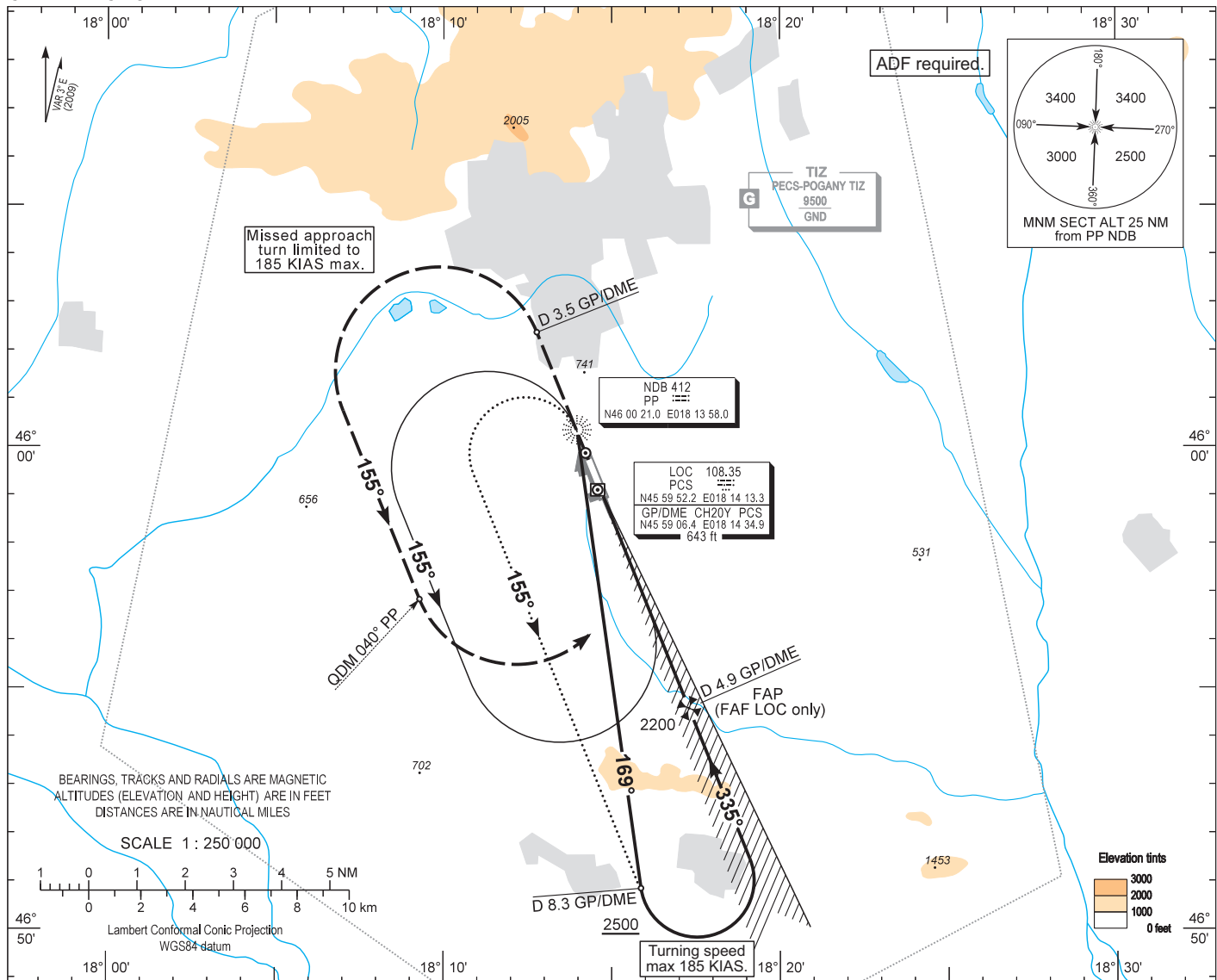


AIP HUNGARY

INSTRUMENT APPROACH CHART - ICAO  
AERODROME ELEV 651  
HEIGHTS RELATED TO THR RWY 34 - ELEV 640

POGÁNY INFO 126.915  
BUDAPEST INFORMATION (WEST) 125.500

PÉCS/POGÁNY  
ILS or LOC RWY 34  
(ACFT CAT A, B, C, D)



OCA (OCH)		A	B	C	D	GROUND SPEED				
STRAIGHT-IN APPROACH	Cat. I.	776 (136)	784 (144)	794 (154)	801 (161)	kt				
	LOC	900 (260)				60	90	120	150	180
CIRCLING APPROACH	ft AMSL	1220	1220	1440	1730	MIN:sec				
	VIS. m	1900	2800	3700	4600	4:42	3:07	2:21	1:53	1:34
Rate of descent (5.2%)						ft / MIN				
						320	480	635	795	955

## AD 2 LHPP INSTRUMENT APPROACH CHART ILS OR LOC RWY 34

Arrivals on 139° - 199° may enter the base turn procedure directly at 4000  
above PP NDB according to the advice of POGÁNY INFO.  
Other arrivals shall enter the holding procedure.

### ILS approach from PP NDB:

Initial altitude: 4000. 185 KIAS max.

Leave PP NDB on QDR 169 and descend to 2500.

At D 8.3 PCS DME turn left to intercept PCS LOC and descend to 2200, then follows ILS.

### ILS approach from PP NDB holding:

Initial altitude: 4000. 185 KIAS max.

At PP NDB turn left to 155° and descend to 2500.

At D 8.3 PCS DME turn left to intercept PCS LOC and follow basic procedure.

### Holding procedure:

Holding fix: PP NDB.

Left hand holding pattern.

Inbound track: 335°

Outbound track: 155°

Rate of turn: 3°/sec. or 25° bank angle

(whichever requires lesser bank)

Outbound timing: 1 min.

Minimum holding altitude: 4000

Final approach descent (LOC only): 3.00°