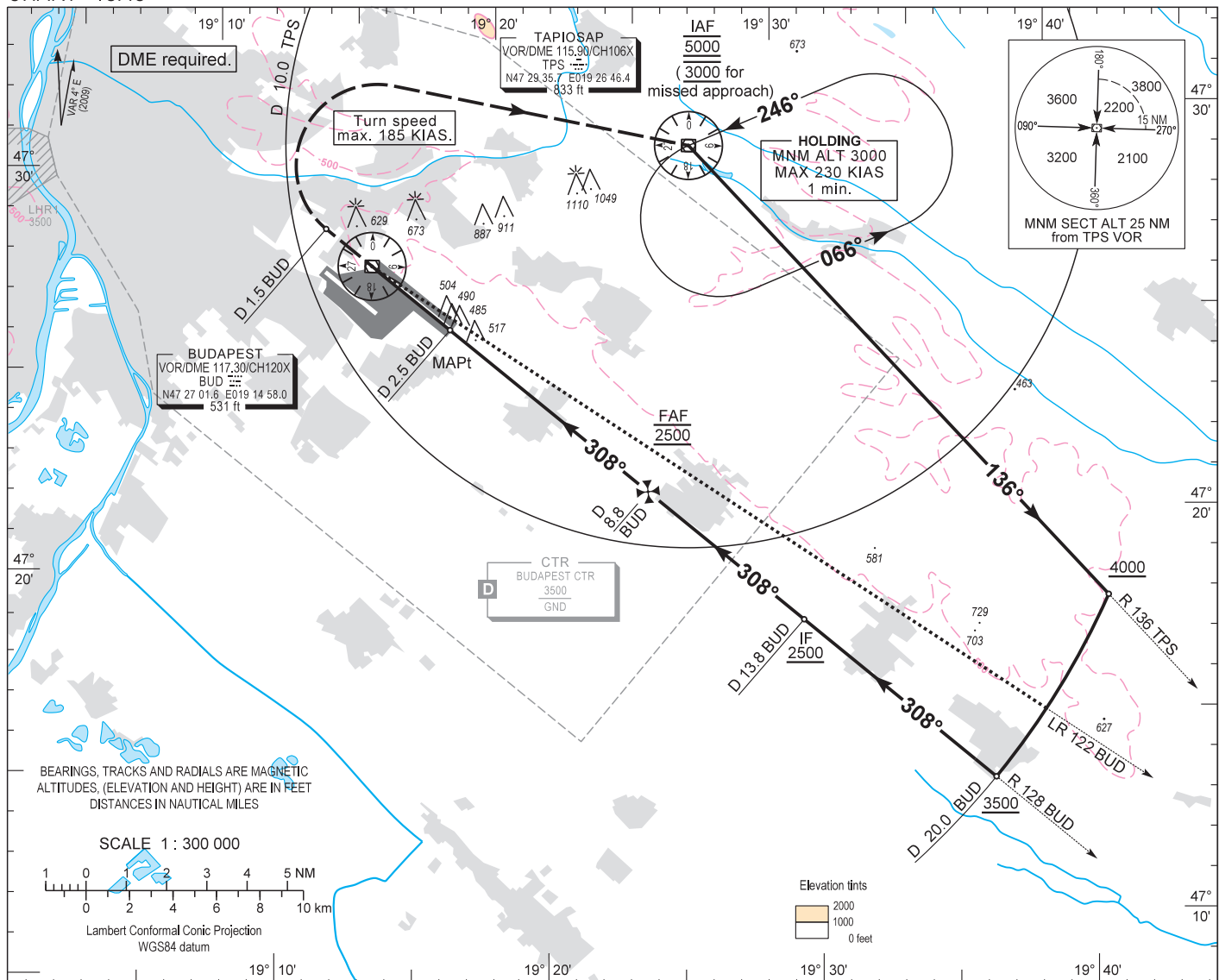


AIP HUNGARY

INSTRUMENT APPROACH CHART - ICAO
AERODROME ELEV 496
HEIGHTS RELATED TO THR RWY 31R - ELEV 416

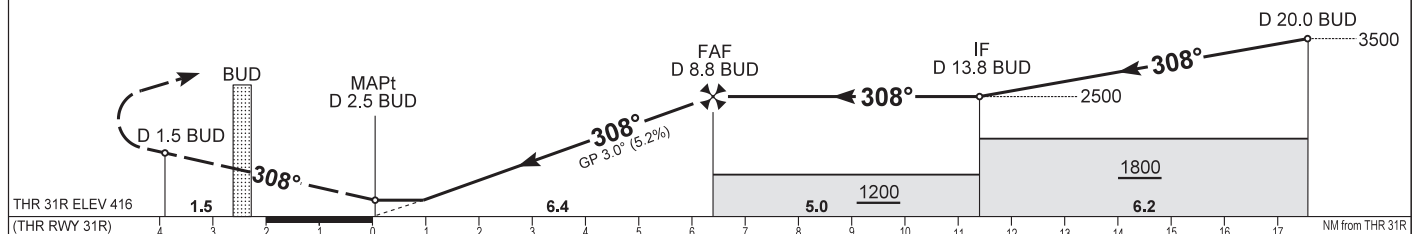
BUDAPEST APP 122.975 123.860
BUDAPEST GROUND 121.910
BUDAPEST TOWER 118.100
BUDAPEST DELIVERY 134.540
BUDAPEST INFORMATION (NORTH) ATIS 132.380 (117.300)
119.350

BUDAPEST/LISZT FERENC
VOR RWY 31R
(ACFT CAT A, B, C, D)



MISSED APPROACH
Climb to 3000 initially on R 128 BUD inbound.
After passing the station continue on R 308 BUD outbound.
When passing D 1.5 BUD on R 308 BUD turn right direct to TPS VOR.
Maximum turning speed 185 KIAS.
At 3000 enter published holding pattern at TPS VOR/DME.

TRANSITION ALTITUDE
10000



OCA (H)	A	B	C	D	DME BUD	NM	8.0	7.0	6.0	5.0	4.0
STRAIGHT-IN APPROACH	770 (360)				DIST THR / RWY 31R	NM	5.5	4.5	3.5	2.5	1.5
CIRCLING	980	1190	1310	1510	ALTITUDE	ft	2220	1900	1580	1260	940

Timing not authorized to define the MAPt.

GS	kt	60	90	120	150	180
FAF - THR 31R (6.4 NM)	min:sec	6:24	4:16	3:12	2:34	2:08
Rate of descent (319 ft/NM)	ft/min	320	480	640	800	960

AD 2 LHBP INSTRUMENT APPROACH CHART VOR RWY 31R

VOR approach procedure:

Initial altitude 5000.

Leave TPS VOR on R 136 TPS outbound and descend 4000.

At D 20.0 BUD turn right and join CW D 20.0 BUD DME arc, descend 3500.

After crossing R 122 BUD leading radial turn right and intercept R 128 BUD inbound (final track), descend 2500.

When crossing D 8.8 BUD (FAF) descend to published minimum altitude.