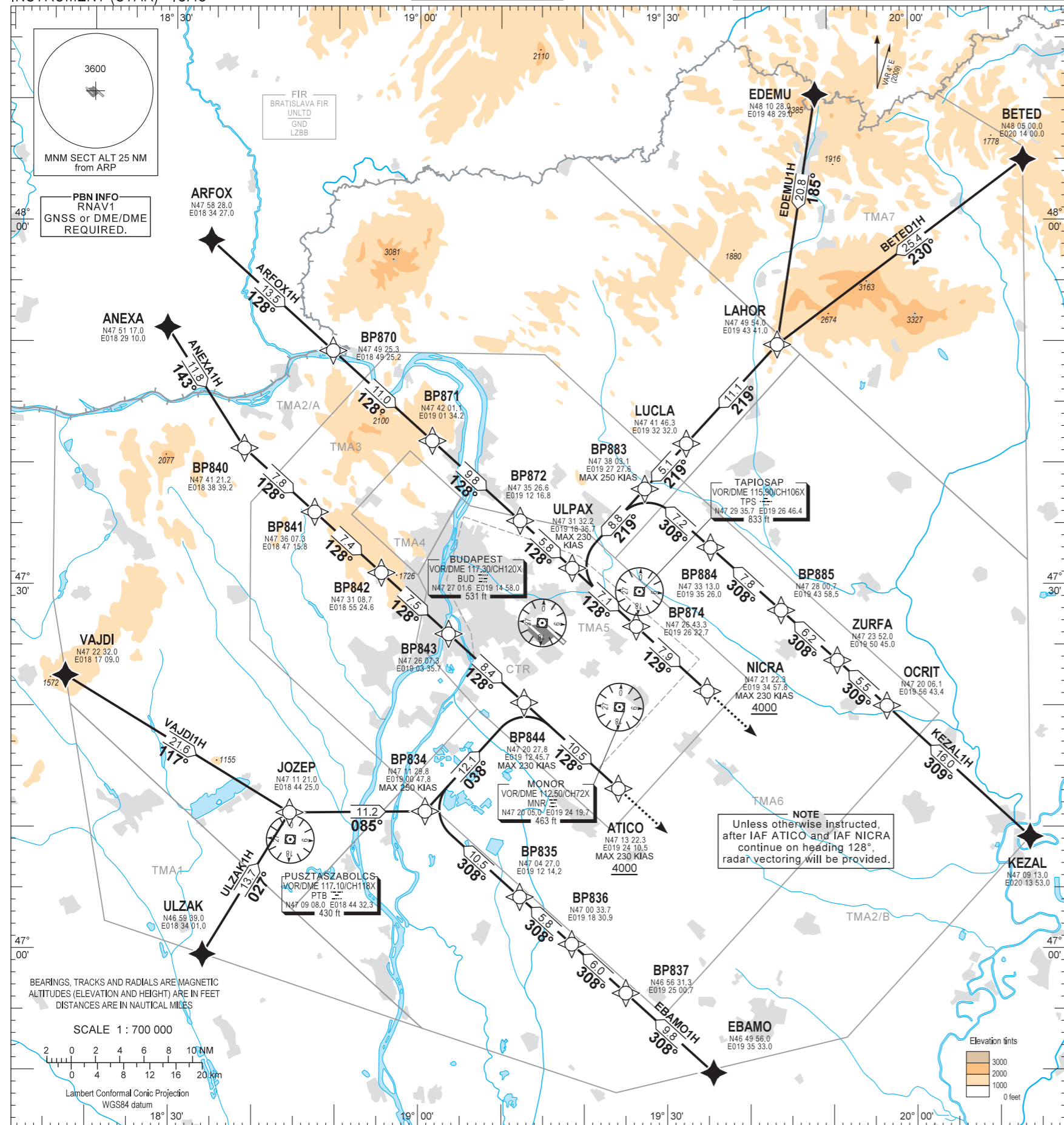


STANDARD ARRIVAL CHART - INSTRUMENT (STAR) - ICAO

TRANSITION ALTITUDE  
10000

BUDAPEST APP 122.975 123.860 BUDAPEST GROUND 121.910  
BUDAPEST DELIVERY 119.510 BUDAPEST DELIVERY 134.540  
BUDAPEST TOWER 118.100 ATIS 132.380 (117.300)  
BUDAPEST INFORMATION (NORTH) 119.350

BUDAPEST/LISZT FERENC  
RNAV RWY 31L, 31R  
ANEXA1H, ARFOX1H, ULZAK1H, BETED1H  
EBAMO1H, EDEMU1H, KEZAL1H, VAJDI1H



NAME	PROCEDURE	RESTRICTIONS
ANEXA1H	From ANEXA to BP840, to BP841, to BP842, to BP843, to BP844, to ATICO at or above 4000.	MAX 230 KIAS at ATICO and NICRA.
VAJDI1H	From VAJDI to JOZEP. To BP834, maximum speed 250 KIAS. To BP844, maximum speed 230 KIAS. To ATICO at or above 4000.	
ULZAK1H	From ULZAK to JOZEP. To BP834, maximum speed 250 KIAS. To BP844, maximum speed 230 KIAS. To ATICO at or above 4000.	
EBAMO1H	From EBAMO to BP837, to BP836, to BP835. To BP834, maximum speed 250 KIAS. To BP844, maximum speed 230 KIAS. To ATICO at or above 4000.	
KEZAL1H	From KEZAL to OCRIT, to ZURFA, to BP885, to BP884. To BP883, maximum speed 250 KIAS. To ULPAX, maximum speed 230 KIAS. To BP874, to NICRA at or above 4000.	
BETED1H	From BETED to LAHOR, to LUCLA, to BP883. To ULPAX, maximum speed 230 KIAS. To BP874, to NICRA at or above 4000.	
EDEMU1H	From EDEMU to LAHOR, to LUCLA, to BP883. To ULPAX, maximum speed 230 KIAS. To BP874, to NICRA at or above 4000.	
ARFOX1H	From ARFOX to BP870, BP871, to BP872, to ULPAX, to BP874, to NICRA at or above 4000.	

NOTE  
Unless otherwise instructed, after IAF ATICO and IAF NICRA continue on heading 128°, radar vectoring will be provided.

BUDAPEST TMA						BUDAPEST CTR	
TMA1		TMA3		TMA6		CTR	
TMA2/A		TMA4		TMA7			
TMA2/B		TMA5					

THIS PAGE IS INTENTIONALLY LEFT BLANK