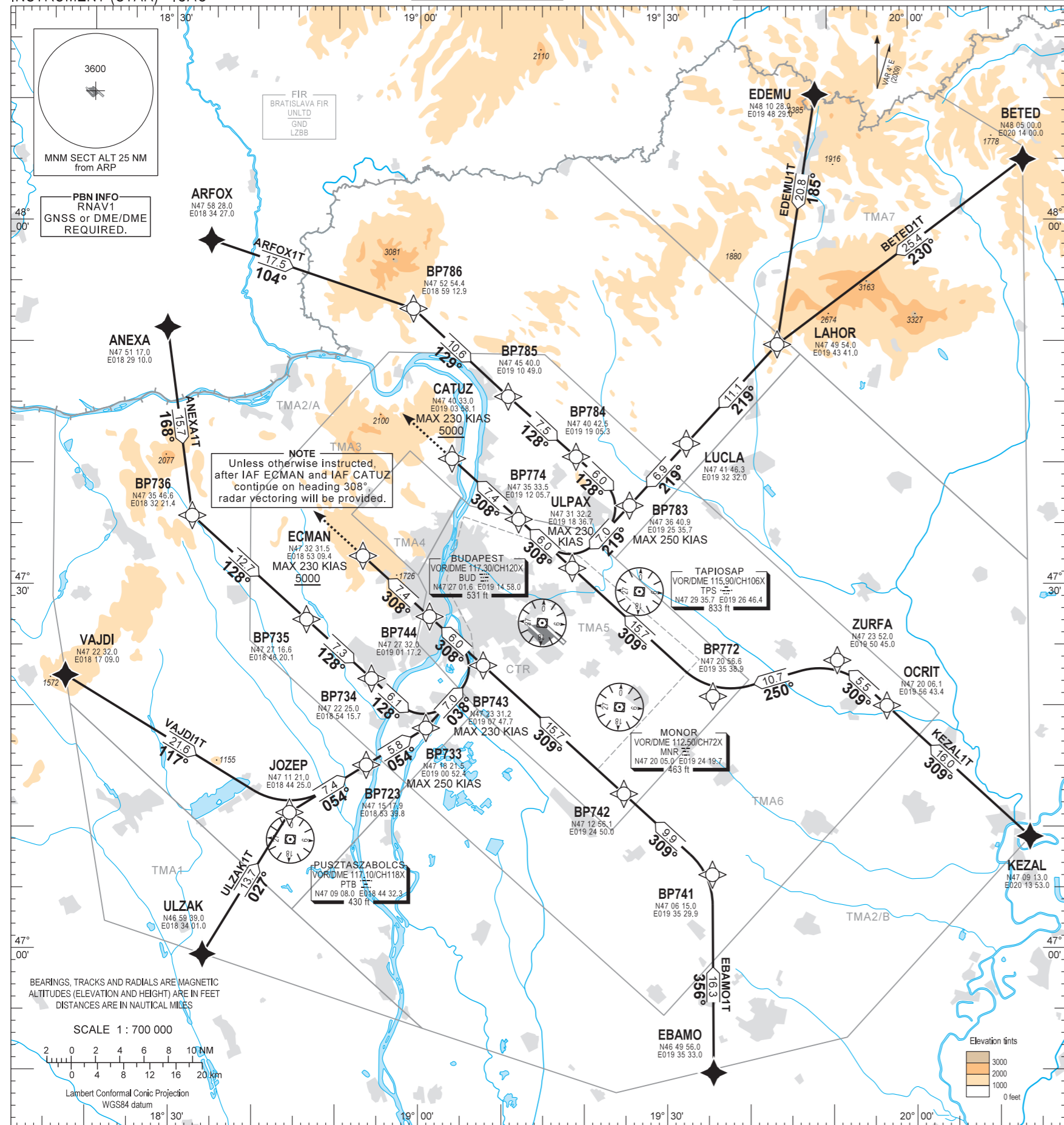


STANDARD ARRIVAL CHART - INSTRUMENT (STAR) - ICAO

TRANSITION ALTITUDE
10000

BUDAPEST APP 122.975 123.860 BUDAPEST GROUND 121.910
BUDAPEST DELIVERY 134.540
BUDAPEST TOWER 118.100 ATIS 132.380 (117.300)
BUDAPEST INFORMATION (NORTH) 119.350

BUDAPEST/LISZT FERENC
RNAV Rwy 13L, 13R
ANEXA1T, ARFOX1T, ULZAK1T, BETED1T
EBAMO1T, EDEMU1T, KEZAL1T, VAJDI1T



NAME	PROCEDURE	RESTRICTIONS
ANEXA1T	From ANEXA to BP736, to BP735, to BP734. To BP733, maximum speed 250 KIAS. To BP743, maximum speed 230 KIAS. To BP744, to ECMAN at or above 5000.	MAX 230 KIAS at ECMAN and CATUZ.
VAJDI1T	From VAJDI to JOZEP, to BP723. To BP733, maximum speed 250 KIAS. To BP743, maximum speed 230 KIAS. To BP744, to ECMAN at or above 5000.	
ULZAK1T	From ULZAK to JOZEP, to BP723. To BP733, maximum speed 250 KIAS. To BP743, maximum speed 230 KIAS. To BP744, to ECMAN at or above 5000.	
EBAMO1T	From EBAMO to BP741, to BP742, to BP743, to BP744, to ECMAN at or above 5000.	
KEZAL1T	From KEZAL to OCRIT, to ZURFA, to BP772, to ULPAX, to BP774, to CATUZ at or above 5000.	
BETED1T	From BETED to LAHOR, to LUCLA, to BP783. To ULPAX, maximum speed 230 KIAS. To BP774, to CATUZ at or above 5000.	
EDEMU1T	From EDEMU to LAHOR, to LUCLA, to BP783. To ULPAX, maximum speed 230 KIAS. To BP774, to CATUZ at or above 5000.	
ARFOX1T	From ARFOX to BP786, to BP785, to BP784. To BP783, maximum speed 250 KIAS. To ULPAX, maximum speed 230 KIAS. To BP774, to CATUZ at or above 5000.	

BUDAPEST TMA						BUDAPEST CTR	
TMA1	TMA BUDAPEST TMA1 FL195 9500	TMA3	TMA BUDAPEST TMA3 FL195 3500	TMA6	TMA BUDAPEST TMA6 FL195 2500	CTR	CTR BUDAPEST CTR 3500 GND
TMA2/A	TMA BUDAPEST TMA2/A FL195 5500	TMA4	TMA BUDAPEST TMA4 FL195 2500	TMA7	TMA BUDAPEST TMA7 FL195 9500		
TMA2/B	TMA BUDAPEST TMA2/B FL195 5500	TMA5	TMA BUDAPEST TMA5 FL195 2000				

THIS PAGE IS INTENTIONALLY LEFT BLANK