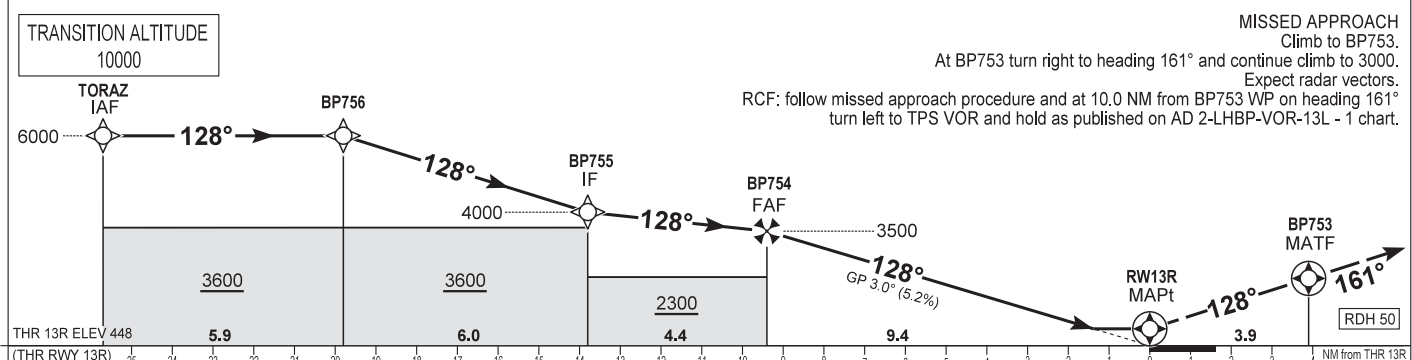
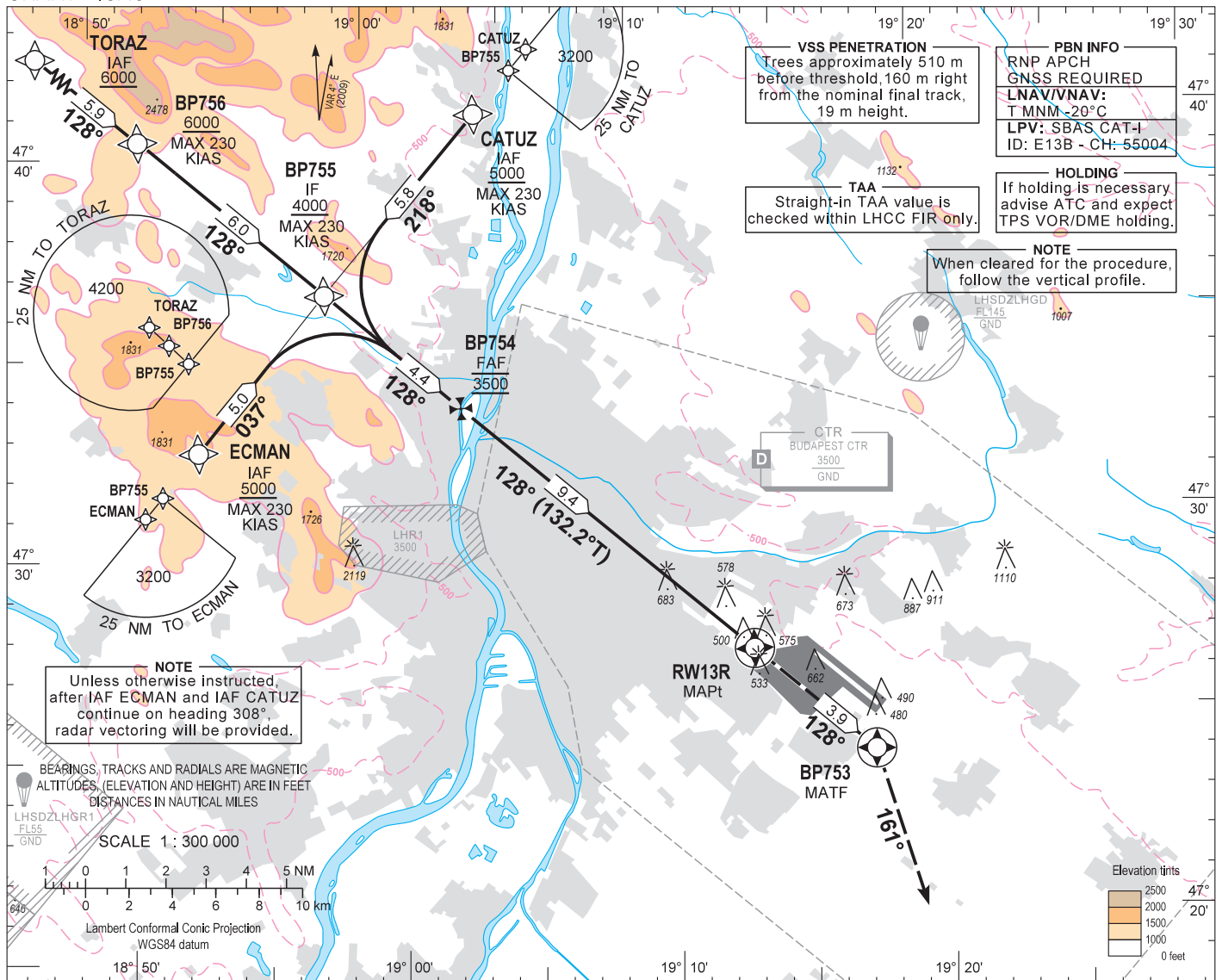


AIP HUNGARY

INSTRUMENT APPROACH CHART - ICAO  
AERODROME ELEV 496  
HEIGHTS RELATED TO THR RWY 13R - ELEV 448

BUDAPEST APP	122.975	123.860	BUDAPEST GROUND	121.910
BUDAPEST TOWER	119.510	118.100	BUDAPEST DELIVERY	134.540
BUDAPEST INFORMATION (NORTH)			ATIS	132.380 (117,300)
				119.350

BUDAPEST/LISZT FERENC  
RNAV (GNSS) RWY 13R  
(ACFT CAT A, B, C, D)



TRANSITION ALTITUDE		10000				MISSED APPROACH Climb to BP753. At BP753 turn right to heading 161° and continue climb to 3000. Expect radar vectors. RCF: follow missed approach procedure and at 10.0 NM from BP753 WP on heading 161° turn left to TPS VOR and hold as published on AD 2-LHBP-VOR-13L - 1 chart.										
THR 13R ELEV 448		5.9	6.0	4.4	9.4	3.9	RWY 13R MAPt									
OCA (H)		A	B	C	D	DIST THR / RWY13L		NM	9.0	8.0	7.0	6.0	5.0	4.0	3.0	2.0
STRAIGHT-IN APPROACH		RNAV				ALTITUDE		ft	3360	3050	2730	2410	2090	1770	1450	1130
		LNNAV/VNAV				Timing not authorized to define the MAPt.										
		LPV				GS		kt	60	90	120	150	180			
CIRCLING		980	1190	1310	1510	BP754 - RWY13R (9.4 NM)		mIn:sec	9:24	6:16	4:42	3:46	3:08			
		Rate of descent (319 ft/NM)		ft/min				320	480	640	800	960				

### AD 2 LHBP INSTRUMENT APPROACH CHART RNAV<sub>(GNSS)</sub> RWY 13R

via TORAZ

PT	WP ID	Role	OverFly	Bearing/ (Len Dur)	Turn Direction	Altitude (FT)	IAS (KT)	VRT ANG	NAV PERF
IF	TORAZ	IAF				+6000			RNP APCH
TF	BP756			131.6 T/5.9 NM		+6000	-230		RNP APCH
TF	BP755	IF		132.2 T/6.0 NM		+4000	-230		RNP APCH
TF	BP754	FAF		132.4 T/4.4 NM		@3500			RNP APCH
TF	RW13R	MAPt	Y	132.2 T/9.4 NM		+498		-3.0	RNP APCH
TF	BP753	MATF	Y	132.3 T/3.9 NM					RNP APCH
VM				165.0 T		@3000			

via CATUZ

PT	WP ID	Role	OverFly	Bearing/ (Len Dur)	Turn Direction	Altitude (FT)	IAS (KT)	VRT ANG	NAV PERF
IF	CATUZ	IAF				+5000	-230		RNP APCH
TF	BP755	IF		222.3 T/5.8 NM		+4000	-230		RNP APCH
TF	BP754	FAF		132.4 T/4.4 NM		@3500			RNP APCH
TF	RW13R	MAPt	Y	132.2 T/9.4 NM		+498		-3.0	RNP APCH
TF	BP753	MATF	Y	132.3 T/3.9 NM					RNP APCH
VM				165.0 T		@3000			

via ECMAN

PT	WP ID	Role	OverFly	Bearing/ (Len Dur)	Turn Direction	Altitude (FT)	IAS (KT)	VRT ANG	NAV PERF
IF	ECMAN	IAF				+5000	-230		RNP APCH
TF	BP755	IF		041.4 T/5.0 NM		+4000	-230		RNP APCH
TF	BP754	FAF		132.4 T/4.4 NM		@3500			RNP APCH
TF	RW13R	MAPt	Y	132.2 T/9.4 NM		+498		-3.0	RNP APCH
TF	BP753	MATF	Y	132.3 T/3.9 NM					RNP APCH
VM				165.0 T		@3000			

SBAS FAS Data Block Coding Data

WAYPOINT COORDINATES SEE: AD 2.22.

FAS-DB (CRC wrapped data)

Operation type	0
SBAS provider ID	1
Airport identifier	LHBP
RWY	13R
Approach performance designator	0
Route indicator	
Reference path data selector	0
Reference path identifier	E13B
LTP/FTP latitude	472655.3400N
LTP/FTP longitude	0191314.7300E
LTP/FTP ellipsoidal height (m)	180.6
FPAP latitude	472547.9550N
FPAP longitude	0191503.7180E
Threshold crossing height (TCH)	15
TCH units	1
Glide path angle (degrees)	3.00
Course width at threshold (m)	105.00
Length offset (m)	88
Horizontal alert limit (m)	40.0
Vertical alert limit (m)	35.0
Computed Data Block	10 10 02 08 0C 4D 00 00 02 33 31 05 D8 DE 5C 14 D4 A7 3F 08 0E 1B 8E F1 FD 78 53 03 2C 81 2C 01 64 0B C8 AF C3 C6 1F 72
Computed CRC	C3C61F72
<b>FAS-DB (not CRC wrapped)</b>	
ICAO code	LH
LTP/FTP Orthometric height (m)	136.6