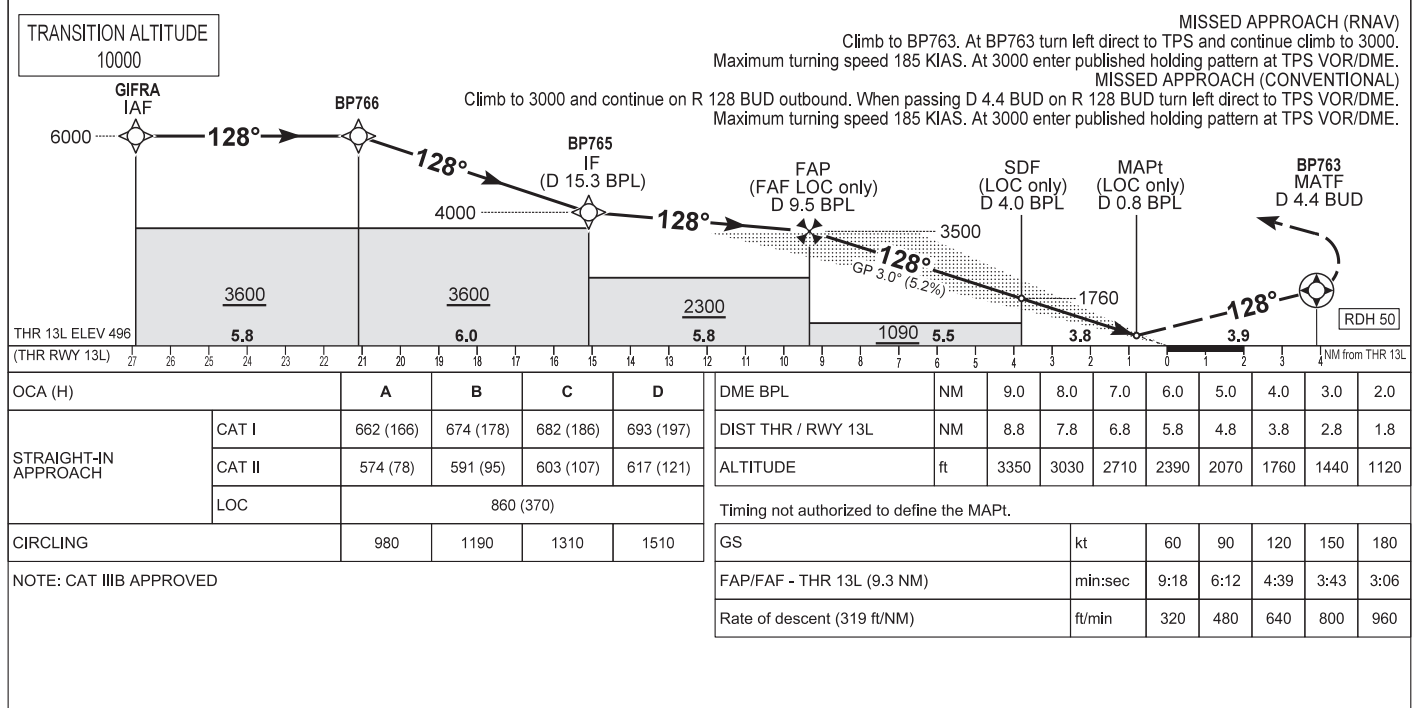
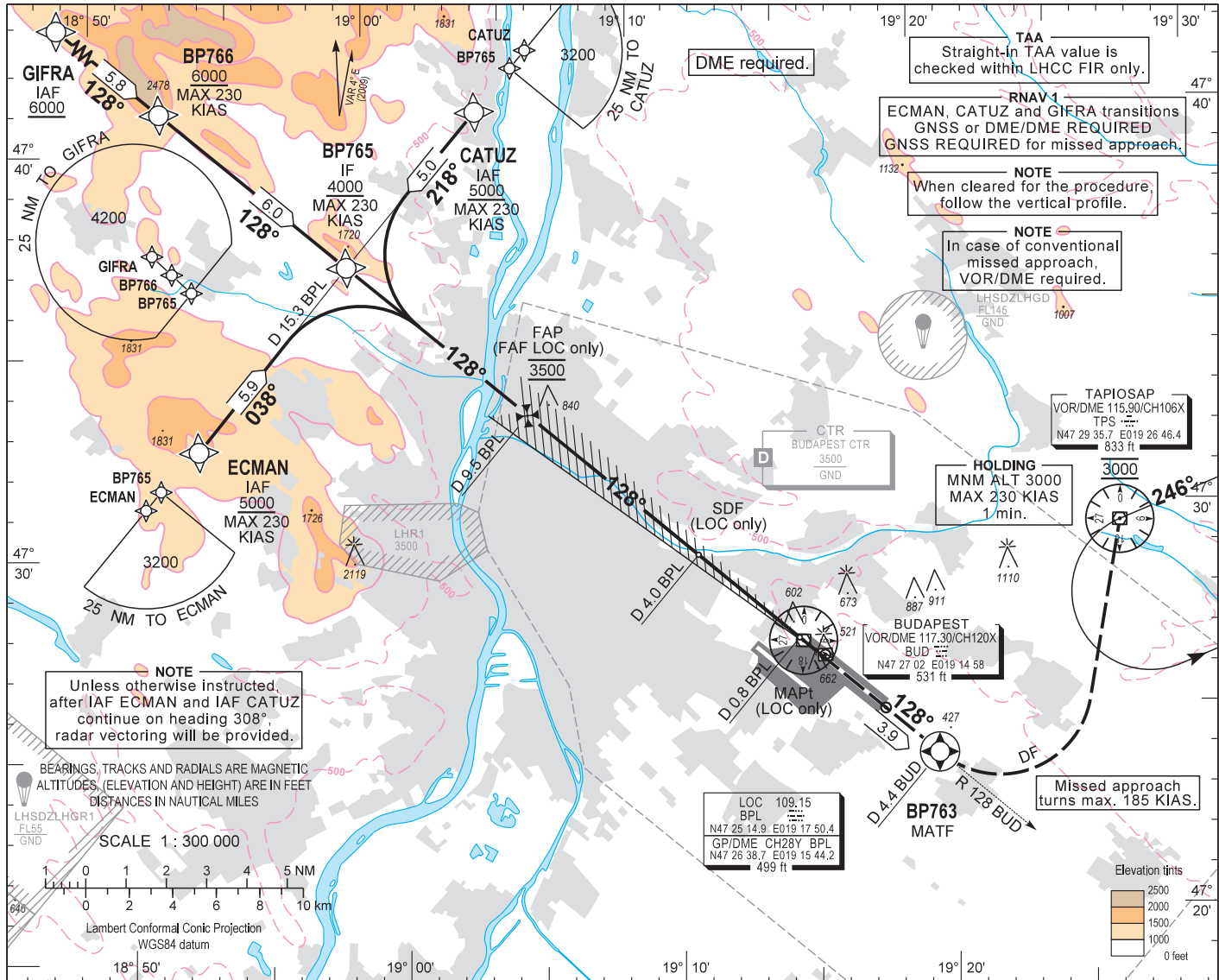


AIP HUNGARY

INSTRUMENT APPROACH CHART - ICAO  
AERODROME ELEV 496  
HEIGHTS RELATED TO THR RWY 13L - ELEV 496

BUDAPEST APP 122.975 123.860  
BUDAPEST GROUND 121.910  
BUDAPEST TOWER 118.100  
BUDAPEST DELIVERY 134.540  
BUDAPEST INFORMATION (NORTH) 119.350  
ATIS 132.380 (117,300)

BUDAPEST/LISZT FERENC  
ILS or LOC RWY 13L  
(ACFT CAT A, B, C, D)



### AD 2 LHBP INSTRUMENT APPROACH CHART ILS OR LOC 13L

via GIFRA

PT	WP ID	Role	OverFly	Bearing/ (Len Dur)	Turn Direction	Altitude (FT)	IAS (KT)	VRT ANG	NAV PERF
IF	GIFRA	IAF				+6000			RNAV1
TF	BP766			132.1 T/5.8 NM		+6000	-230		RNAV1
TF	BP765	IF		132.2 T/6.0 NM		+4000	-230		RNAV1
CF	BP764	FAF		132.2 T/5.8 NM		@3500			
CF	RW13L	LTP	Y	132.4 T/9.3 NM		+546		-3.0	
TF	BP763	MATF	Y	132.4 T/3.9 NM			-185		RNP APCH
DF	TPS				L	@3000	-185		RNP APCH
HM	TPS	MAHF		250.0 T/1 min	L	@3000	-230		RNP APCH

via ECMAN

PT	WP ID	Role	OverFly	Bearing/ (Len Dur)	Turn Direction	Altitude (FT)	IAS (KT)	VRT ANG	NAV PERF
IF	ECMAN	IAF				+5000	-230		RNAV1
TF	BP765	IF		041.5 T/5.9 NM		+4000	-230		RNAV1
CF	BP764	FAF		132.2 T/5.8 NM		@3500			
CF	RW13L	LTP	Y	132.4 T/9.3 NM		+546		-3.0	
TF	BP763	MATF	Y	132.4 T/3.9 NM			-185		RNP APCH
DF	TPS				L	@3000	-185		RNP APCH
HM	TPS	MAHF		250.0 T/1 min	L	@3000	-230		RNP APCH

via CATUZ

PT	WP ID	Role	OverFly	Bearing/ (Len Dur)	Turn Direction	Altitude (FT)	IAS (KT)	VRT ANG	NAV PERF
IF	CATUZ	IAF				+5000	-230		RNAV1
TF	BP765	IF		222.3T/5.0 NM		+4000	-230		RNAV1
CF	BP764	FAF		132.2 T/5.8 NM		@3500			
CF	RW13L	LTP	Y	132.4 T/9.3 NM		+546		-3.0	
TF	BP763	MATF	Y	132.4 T/3.9 NM			-185		RNP APCH
DF	TPS				L	@3000	-185		RNP APCH
HM	TPS	MAHF		250.0 T/1 min	L	@3000	-230		RNP APCH

WAYPOINT COORDINATES SEE: AD 2.22.