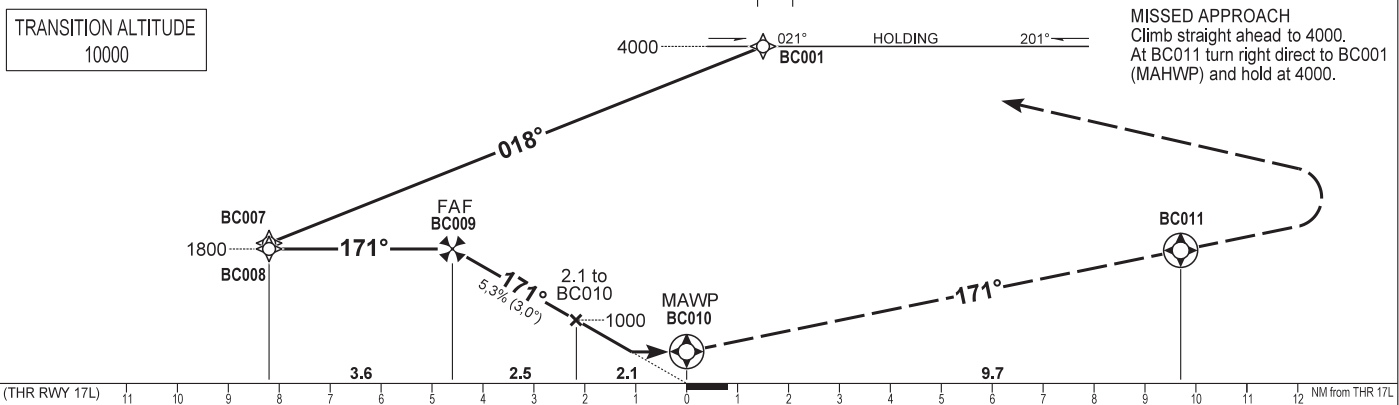
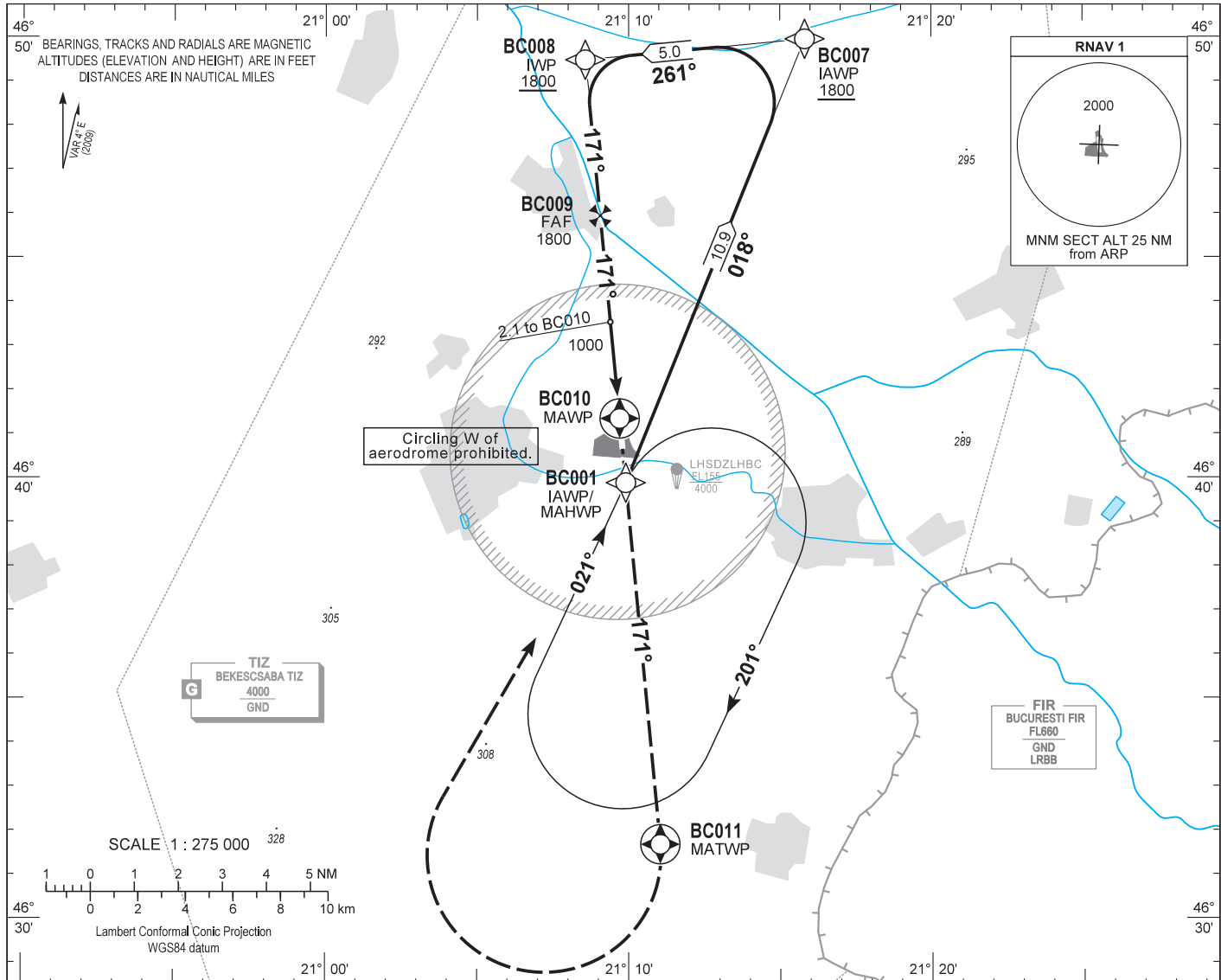


AIP HUNGARY

INSTRUMENT APPROACH CHART - ICAO
AERODROME ELEV 286
HEIGHTS RELATED TO THR RWY 17L - ELEV 283

BÉKÉSCSABA INFO 123.260
BUDAPEST INFORMATION (EAST) 133.000

BÉKÉSCSABA
RNAV^(GNSS) RWY 17L
(ACFT CAT A, B, C, D)



OCA (OCH)		A	B	C	D	GROUND SPEED						
STRAIGHT-IN APPROACH		640 (360)				kt	60	90	120	150	180	
CIRCLING APPROACH W of aerodrome		ft AMSL	690	790	890	990	FIR - MAPt 4.62 NM					
Not authorised.		VIS. m	1900	2800	3700	4600	MIN:sec	4:38	3:05	2:19	1:51	1:33

AD 2 LHBC INSTRUMENT APPROACH CHART RNAV_(GNSS) RWY 17L

Only aircraft, equipment and aircrew **approved by the State of the Operator** to carry out GNSS approaches, may use the procedure.

Arrivals:

Arrivals on 258° clockwise to 138° may enter the initial approach directly at 4000, according to the advice of BÉKÉSCSABA INFO.
Other arrivals must enter the holding.

Holding procedure:

Holding fix: BC001 (IAWP/MAHWP).
Right hand holding pattern.
Inbound track: 021°
Outbound track: 201°
Rate of turn: 3°/sec. or 25° bank angle
(whichever requires lesser bank)
Outbound distance: 4.0 km
Minimum holding altitude: 4000

Final approach descent: 3.00°

WAYPOINT COORDINATES AD 2-LHBC-RNAV_(GNSS) 17L

WAYPOINT	LATITUDE	LONGITUDE	REMARK
BC001	N46 39 53.6	E021 09 54.3	IAWP
BC007	N46 49 57.8	E021 15 49.1	IAWP
BC008	N46 49 29.4	E021 08 34.1	IWP
BC009	N46 45 57.1	E021 09 03.7	FAF
BC010	N46 41 21.1	E021 09 42.2	MAWP
BC011	N46 31 41.3	E021 11 02.5	MATWP
BC001	N46 39 53.6	E021 09 54.3	MAHWP