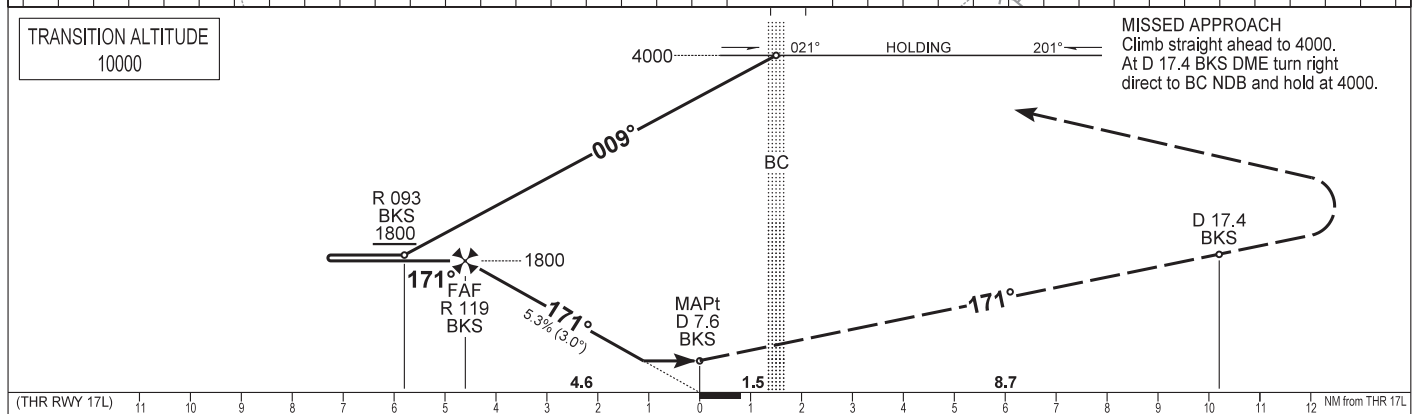
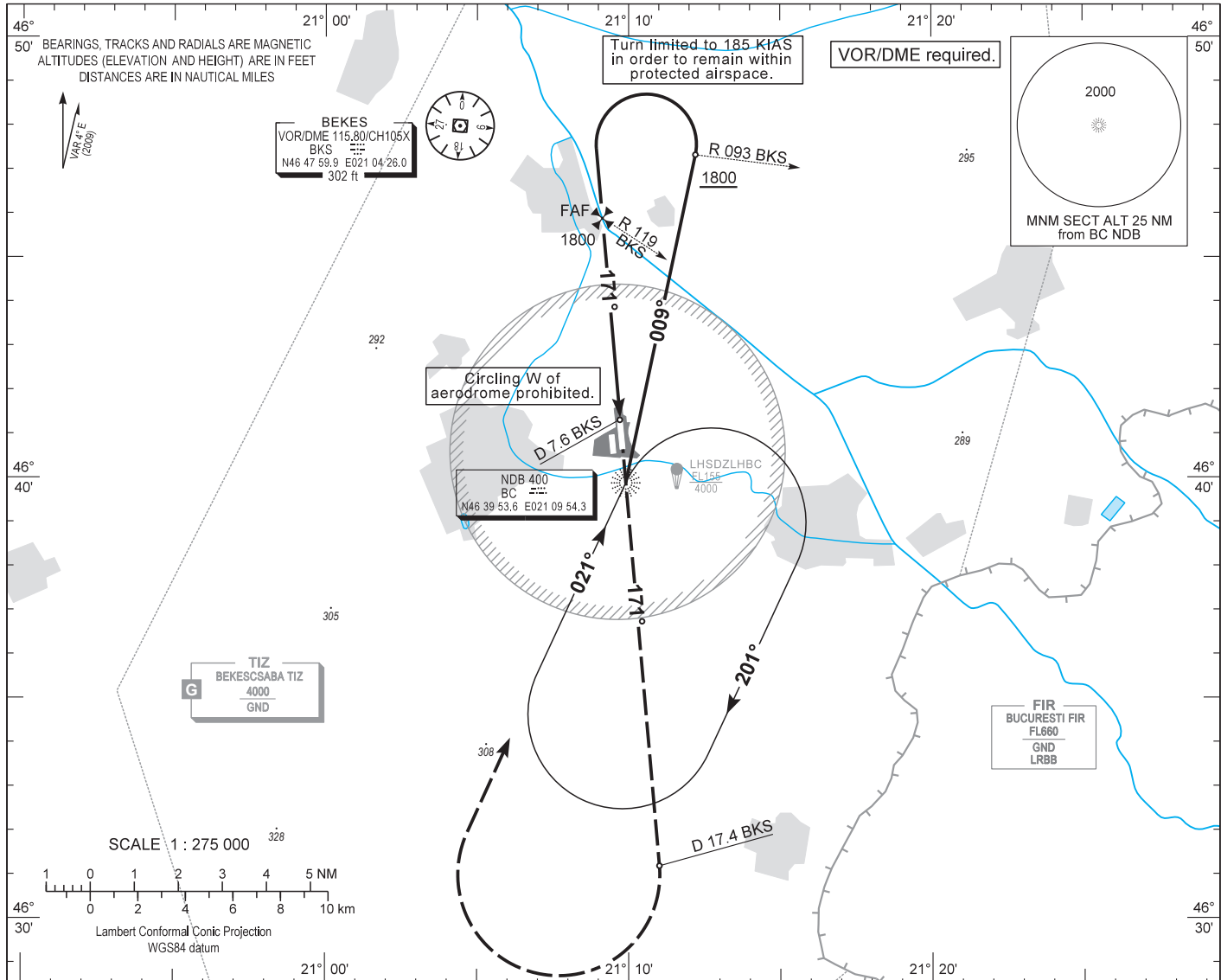


AIP HUNGARY

INSTRUMENT APPROACH CHART - ICAO  
AERODROME ELEV 286  
HEIGHTS RELATED TO THR RWY 17L - ELEV 283

BÉKÉSCSABA INFO 123.260  
BUDAPEST INFORMATION (EAST) 133.000

BÉKÉSCSABA  
NDB RWY 17L  
(ACFT CAT A, B, C, D)



(THR RWY 17L)	11	10	9	8	7	6	5	4	3	2	1	0	1	2	3	4	5	6	7	8	9	10	11	12	NM from THR 17L			
OCA (OCH)	A				B				C				D				GROUND SPEED					kt	60	90	120	150	180	
STRAIGHT-IN APPROACH	640 (360)												FAF - MAPt 4.62 NM					MIN:sec	4:38	3:05	2:19	1:51	1:33					
CIRCLING APPROACH W of aerodrome	ft AMSL	690	790	890	990																							
	Not authorised.	VIS. m	1900	2800	3700	4600																						

## AD 2 LHBC INSTRUMENT APPROACH CHART NDB RWY 17L

### Approach from BC NDB:

Initial altitude: 4000.

Fly outbound on 009° and descend to 1800 or above.

When crossing R 093 BKS VOR turn left (185 KIAS max.) to 171° inbound BC NDB.

After crossing R 119 BKS VOR leave 1800 and descend to 640.

### Holding procedure:

Holding fix: BC NDB.

Right hand holding pattern.

Inbound track: 021°

Outbound track: 201°

Rate of turn: 3°/sec. or 25° bank angle  
(whichever requires lesser bank)

Outbound timing: 1 min.

Minimum holding altitude: 4000

**Final approach descent: 3.00°**