

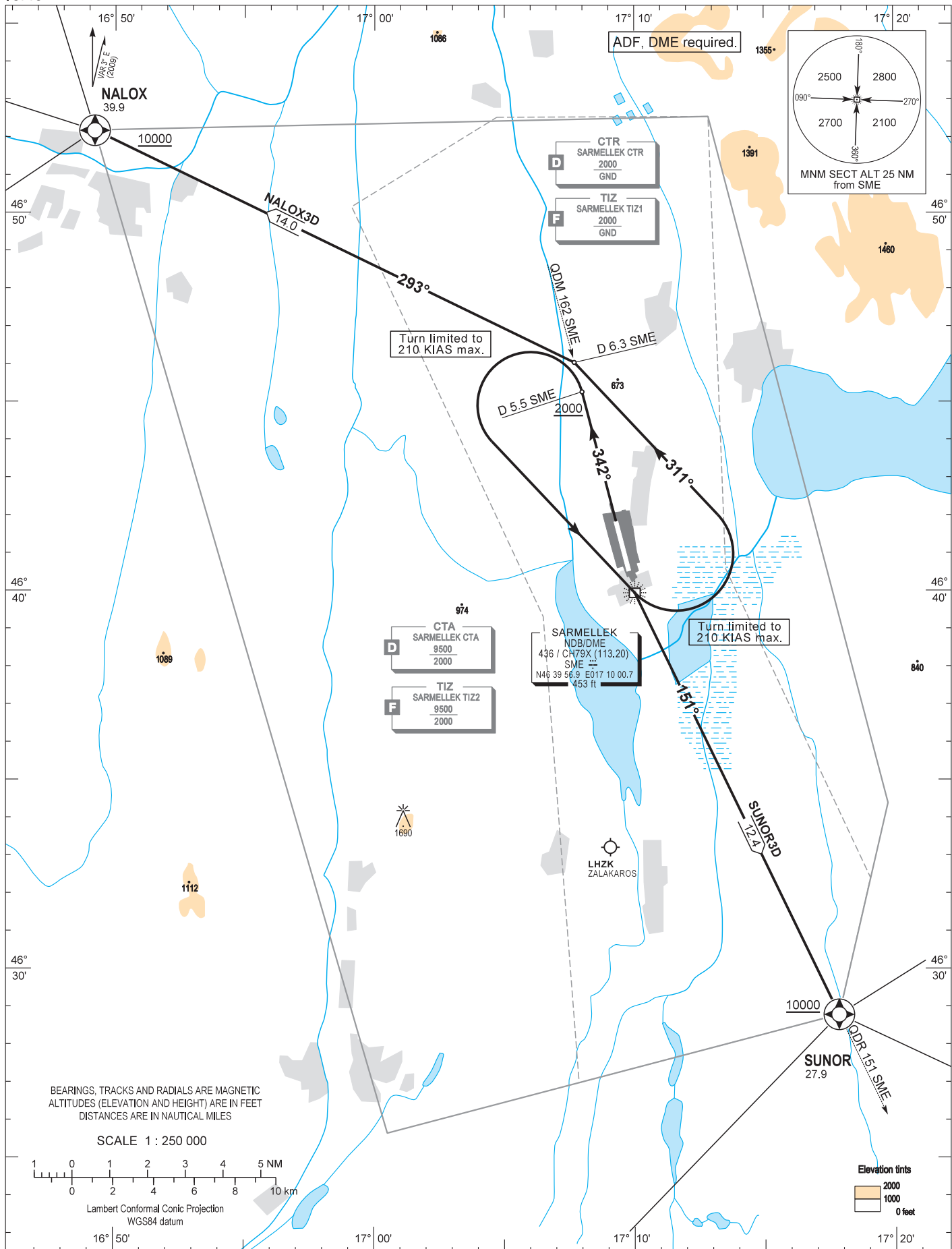
AIP HUNGARY

STANDARD DEPARTURE CHART -
INSTRUMENT (SID) -
ICAO

TRANSITION ALTITUDE
10000

BALATON TOWER 134.585
BALATON INFO 134.585
BUDAPEST INFORMATION (WEST) 125.500

HÉVÍZ/BALATON
RWY 34
NALOX3D SUNOR3D



AD 2 LHSM STANDARD DEPARTURE CHART INSTRUMENT RWY 34

NAME	PROCEDURE
NALOX3D (39.9)	After departure continue RWY HDG. Climb to FL100 or above by ATC. Cross D 5.5 SME DME at 2000 or above then turn left and proceed direct to SME NDB. (Turn limited to 210 KIAS max.) After crossing SME NDB turn left to track 311°. After crossing QDM 162 SME NDB turn left to track 293° proceeding to NALOX. When passing 9000 change QNH setting for Budapest QNH provided by BALATON INFO or BUDAPEST INFORMATION. Cross NALOX at 10000 or above (only by ATC clearance).
SUNOR3D (27.9)	After departure continue RWY HDG. Climb to FL100 or above by ATC. Cross D 5.5 SME DME at 2000 or above then turn left and proceed direct to SME NDB. (Turn limited to 210 KIAS max.) After crossing SME NDB fly on QDR 151 SME NDB proceeding to SUNOR. When passing 9000 change QNH setting for Budapest QNH provided by BALATON INFO or BUDAPEST INFORMATION. Cross SUNOR at 10000 or above (only by ATC clearance).