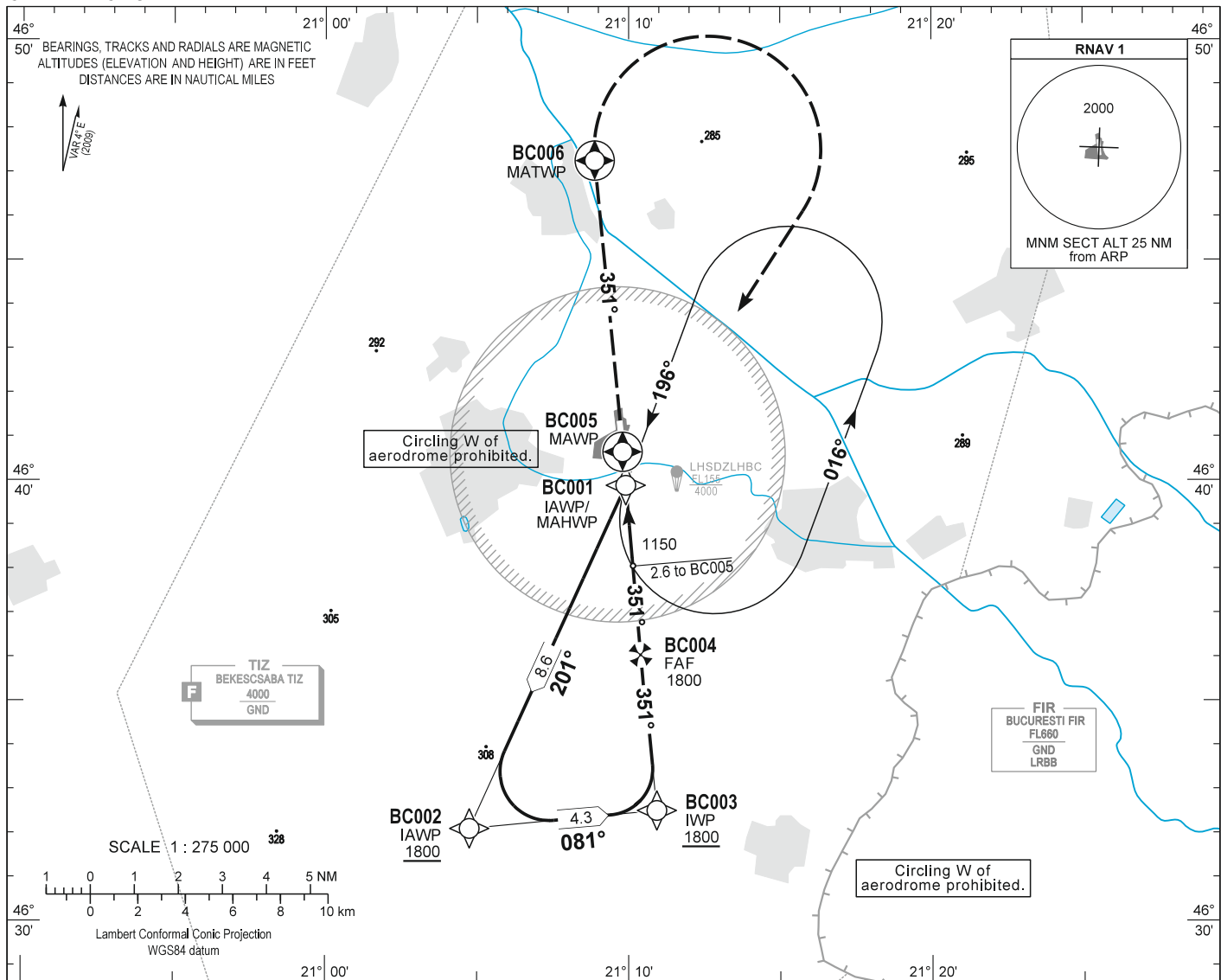


AIP HUNGARY

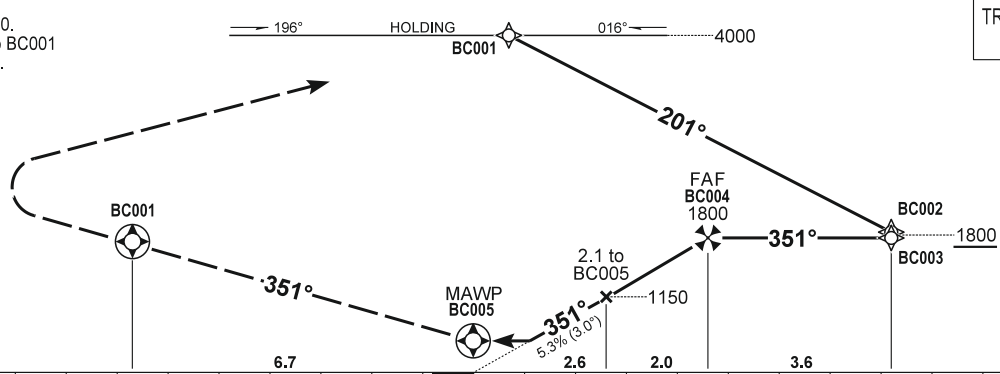
INSTRUMENT APPROACH CHART - ICAO  
AERODROME ELEV 286  
HEIGHTS RELATED TO THR RWY 35R - ELEV 286

BÉKÉSCSABA INFO 123.260  
BUDAPEST INFORMATION (EAST) 133.000

BÉKÉSCSABA  
RNAV<sup>(GNSS)</sup> RWY 35R  
(ACFT CAT A, B, C, D)



MISSED APPROACH  
Climb straight ahead to 4000.  
At BC006 turn right direct to BC001  
(MAHWP) and hold at 4000.



TRANSITION ALTITUDE  
10000

(THR RWY 35R)	11	10	9	8	7	6	5	4	3	2	1	0	1	2	3	4	5	6	7	8	9	10	11	12	NM from THR 35R		
OCA (OCH)	A				B				C				D				GROUND SPEED					kt	60	90	120	150	180
STRAIGHT-IN APPROACH	630 (350)				FAF - MAPt 4.62 NM					MIN:sec					4:37	3:04	2:19	1:51	1:32								
CIRCLING APPROACH W of aerodrome Not authorised.	ft AMSL	690	790	890	990																						
	VIS. m	1900	2800	3700	4600																						

## AD 2 LHBC INSTRUMENT APPROACH CHART RNAV<sub>(GNSS)</sub> RWY 35R

Only aircraft, equipment and aircrew **approved by the State of the Operator** to carry out GNSS approaches, may use the procedure.

**Arrivals:**

Arrivals on 081° clockwise to 321° may enter the initial approach directly at 4000, according to the advice of BÉKÉSCSABA INFO.  
Other arrivals must enter the holding.

**Holding procedure:**

Holding fix: BC001 (IAWP/MAHWP).  
Right hand holding pattern.  
Inbound track: 196°  
Outbound track: 016°  
Rate of turn: 3°/sec. or 25° bank angle  
(whichever requires lesser bank)  
Outbound distance: 4.0 km  
Minimum holding altitude: 4000

**Final approach descent: 3.00°**

### WAYPOINT COORDINATES AD 2-LHBC-RNAV<sub>(GNSS)</sub> 35R

WAYPOINT	LATITUDE	LONGITUDE	REMARK
BC001	N46 39 53.6	E021 09 54.3	IAWP
BC002	N46 32 06.3	E021 04 45.2	IAWP
BC003	N46 32 30.8	E021 10 55.7	IWP
BC004	N46 36 03.6	E021 10 26.2	FAF
BC005	N46 40 39.2	E021 09 48.0	MAWP
BC006	N46 47 15.8	E021 08 52.8	MATWP
BC001	N46 39 53.6	E021 09 54.3	MAHWP