

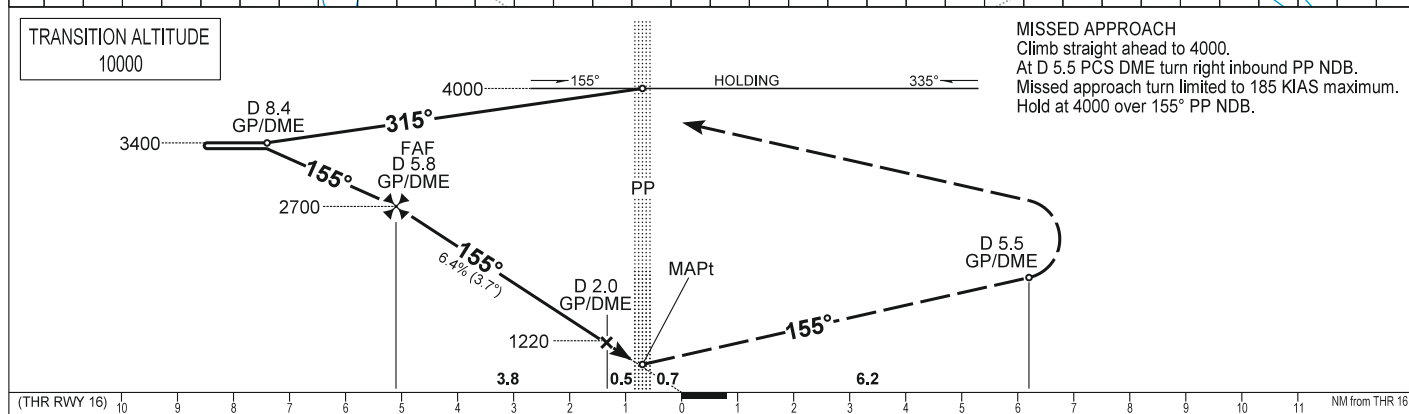
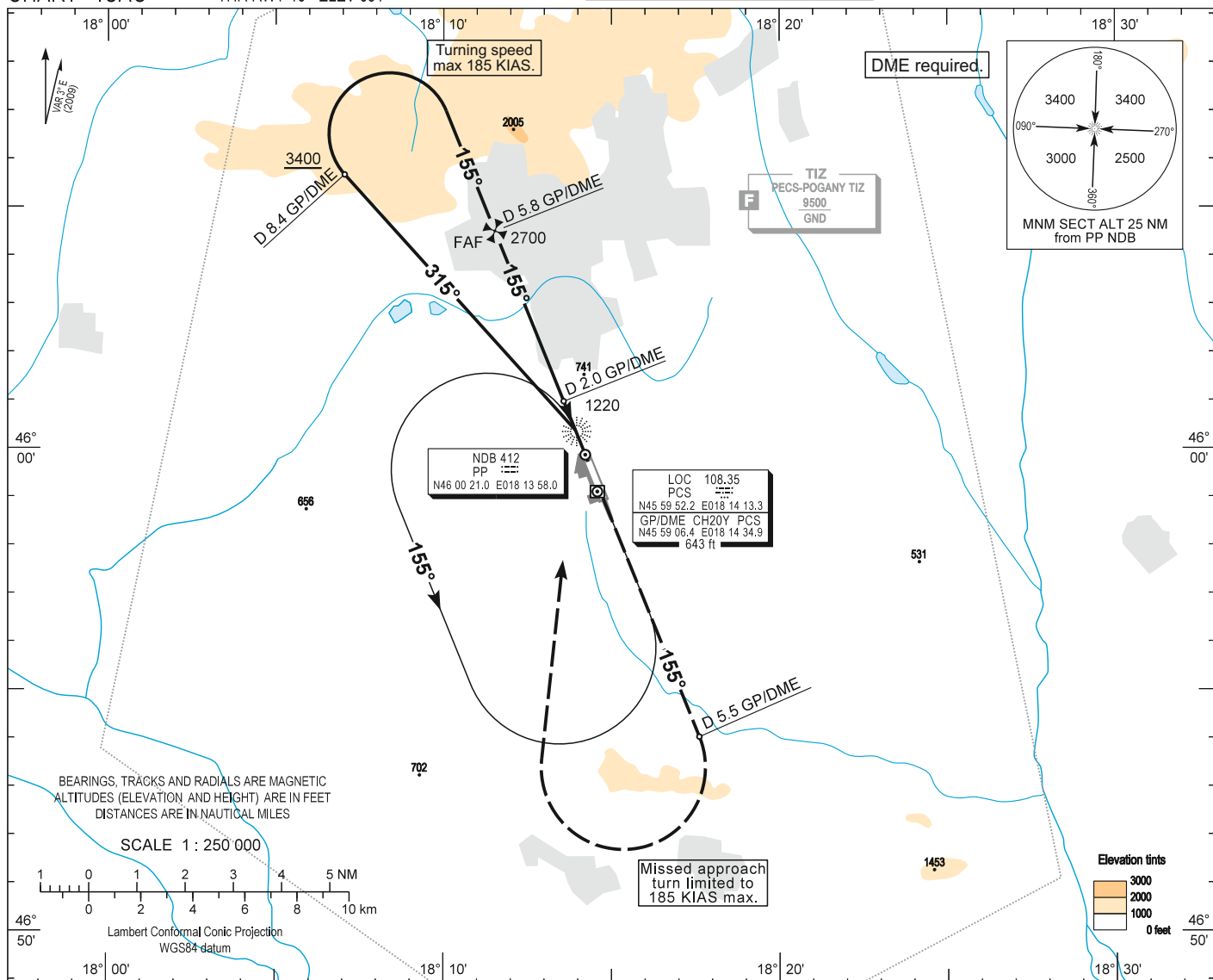
AIP HUNGARY

INSTRUMENT
APPROACH
CHART - ICAO

AERODROME ELEV 651
HEIGHTS RELATED TO
THR RWY 16 - ELEV 651

POGÁNY INFO 126.915
BUDAPEST INFORMATION (WEST) 125.500

PÉCS/POGÁNY
NDB RWY 16
(ACFT CAT A, B, C, D)



OCA (OCH)	A	B	C	D	GROUND SPEED	kt	60	90	120	150	180
STRAIGHT-IN APPROACH	1040 (390)				FAF - MAPt 4.47 NM	MIN:sec	4:28	2:58	2:14	1:47	1:29
CIRCLING APPROACH	ft AMSL	1220	1220	1440							
	VIS. m	1900	2800	3700							

AD 2 LHPP INSTRUMENT APPROACH CHART NDB RWY 16

Arrivals on 285° - 345° may enter the base turn procedure directly at 4000
above PP NDB according to the advice of POGÁNY INFO.
Other arrivals shall enter the holding procedure.

NDB approach from PP NDB:

Initial altitude: 4000. 185 KIAS max.

Leave PP NDB on QDR 315 and descend to 3400.

At D 8.4 PCS DME turn right to 155° inbound PP NDB and descend to 2700.

Proceed to FAF at D 5.8 PCS DME and descend to 1220.

At step-down fix D 2.0 PCS DME proceed to PP NDB and descend to 1040.

Holding procedure:

Holding fix: PP NDB.

Left hand holding pattern.

Inbound track: 335°

Outbound track: 155°

Rate of turn: 3°/sec. or 25° bank angle
(whichever requires lesser bank)

Outbound timing: 1 min.

Minimum holding altitude: 4000

Final approach descent: 3.66°