

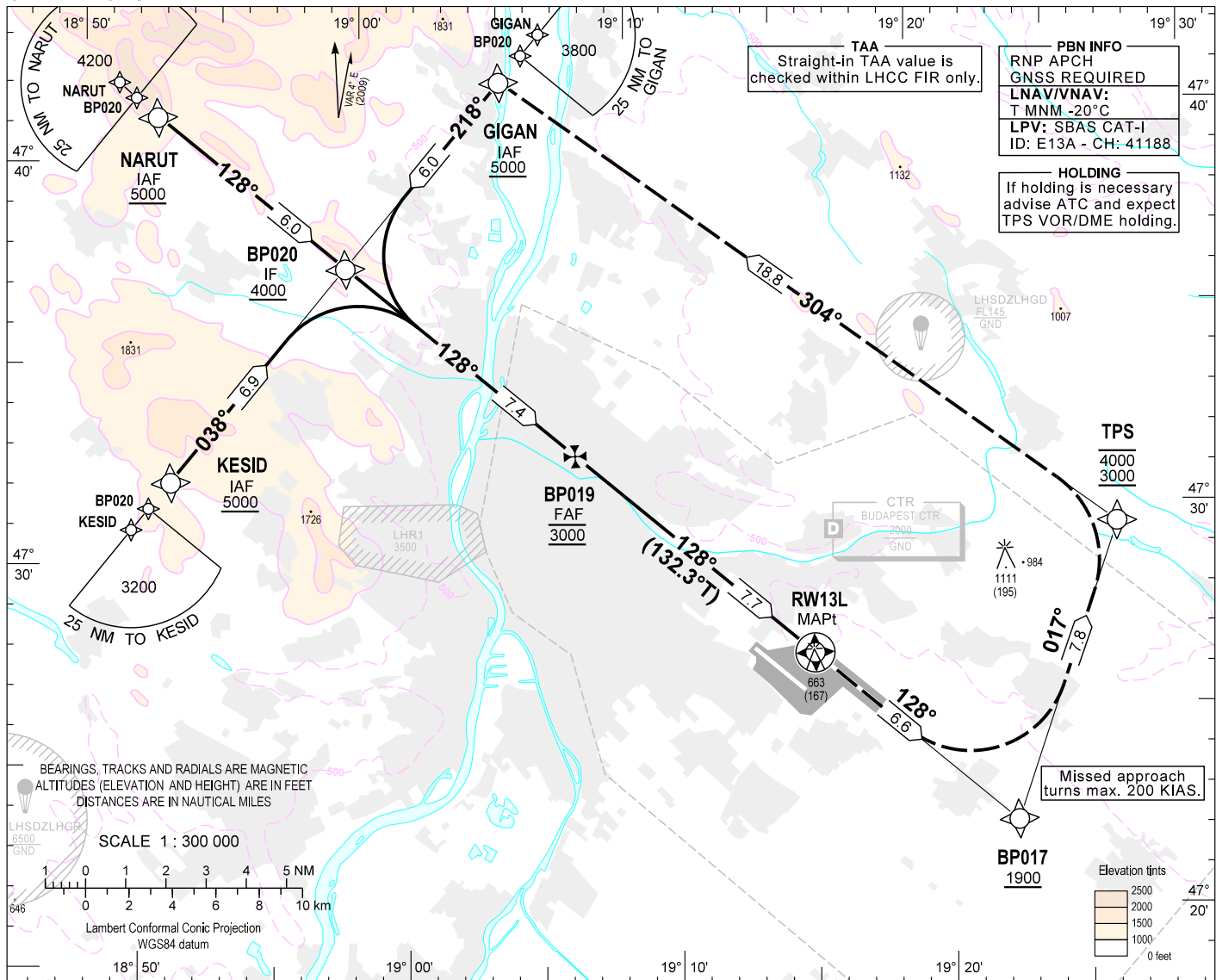
AIP HUNGARY

INSTRUMENT APPROACH CHART - ICAO

AERODROME ELEV 496
HEIGHTS RELATED TO THR RWY 13L - ELEV 496

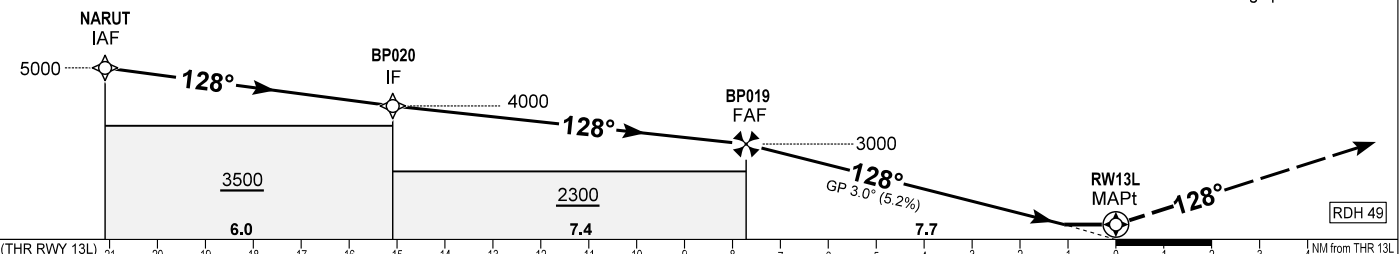
BUDAPEST APP 122.975 123.860
BUDAPEST GROUND 121.910
BUDAPEST DELIVERY 134.540
BUDAPEST TOWER 118.100 ATIS 132.380 (117.300)
BUDAPEST INFORMATION (NORTH) 119.350

BUDAPEST/LISZT FERENC
RNAV^(GNSS) RWY 13L
(ACFT CAT A, B, C, D)



TRANSITION ALTITUDE
10000

MISSED APPROACH
Climb to BP017 at or above 1900.
Turn left to TPS at or above 3000.
Then turn left to GIGAN at 4000.
Maximum turning speed 200 KIAS.



CAT OF ACFT		A	B	C	D	DIST THR / RW13L	NM	7.0	6.0	5.0	4.0	3.0	2.0	1.0	0.0	
OCA (H) STRAIGHT-IN	LNAV	2.5% macg	860 (356)	870 (372)	900 (396)	910 (413)	ALTITUDE	ft	2770	2460	2140	1820	1500	1180	860	546
	LNAV/VNAV	2.5% macg	767 (271)	777 (281)	798 (302)	824 (328)	GS	kt	80	100	120	140	160	180		
	LPV	2.5% macg	767 (271)	777 (281)	786 (290)	796 (300)		BP019 - RW13L (7.7 NM) Timing not authorised for defining the MAPt.	min:sec	5:47	4:37	3:51	3:18	2:53	2:34	
		LPV	4.0% macg	656 (160)	666 (170)	676 (180)	686 (190)	Rate of descent (318 ft/NM)	ft/min	420	530	640	740	850	960	
CIRCLING			970	1190	1310	1510										

AD 2 LHBP INSTRUMENT APPROACH CHART RNAV_(GNSS) RWY 13L

via NARUT

PT	WP ID	OverFly	Fix role	TD	VAR	CRS Val (°)	CRS Type	TIME (s)	DIST (NM)	MNM ALT (ft)	MAX ALT (ft)	IAS MAX (kt)	VRT ANG	NAV PERF
IF	NARUT		IAF		4.5					5000				RNP APCH
TF	BP020		IF		4.5	132.1	TT		6.0	4000				RNP APCH
TF	BP019		FAF		4.5	132.2	TT		7.4	3000	3000			RNP APCH
TF	RW13L	Y	MAPt		4.5	132.3	TT		7.7	546			-3.0	RNP APCH
TF	BP017		MATF		4.5	132.4	TT		6.6	1900		200		RNP APCH
TF	TPS		MATF		4.5	021.3	TT		7.8	3000	4000	200		RNP APCH
TF	GIGAN				4.5	308.5	TT		18.8	4000	4000	200		RNP APCH

via GIGAN

PT	WP ID	OverFly	Fix role	TD	VAR	CRS Val (°)	CRS Type	TIME (s)	DIST (NM)	MNM ALT (ft)	MAX ALT (ft)	IAS MAX (kt)	VRT ANG	NAV PERF
IF	GIGAN		IAF		4.5					5000				RNP APCH
TF	BP020		IF		4.5	222.4	TT		6.0	4000				RNP APCH
TF	BP019		FAF		4.5	132.2	TT		7.4	3000	3000			RNP APCH
TF	RW13L	Y	MAPt		4.5	132.3	TT		7.7	546			-3.0	RNP APCH
TF	BP017		MATF		4.5	132.4	TT		6.6	1900		200		RNP APCH
TF	TPS		MATF		4.5	021.3	TT		7.8	3000	4000	200		RNP APCH
TF	GIGAN				4.5	308.5	TT		18.8	4000	4000	200		RNP APCH

via KESID

PT	WP ID	OverFly	Fix role	TD	VAR	CRS Val (°)	CRS Type	TIME (s)	DIST (NM)	MNM ALT (ft)	MAX ALT (ft)	IAS MAX (kt)	VRT ANG	NAV PERF
IF	KESID		IAF		4.5					5000				RNP APCH
TF	BP020		IF		4.5	042.3	TT		6.9	4000				RNP APCH
TF	BP019		FAF		4.5	132.2	TT		7.4	3000	3000			RNP APCH
TF	RW13L	Y	MAPt		4.5	132.3	TT		7.7	546			-3.0	RNP APCH
TF	BP017		MATF		4.5	132.4	TT		6.6	1900		200		RNP APCH
TF	TPS		MATF		4.5	021.3	TT		7.8	3000	4000	200		RNP APCH
TF	GIGAN				4.5	308.5	TT		18.8	4000	4000	200		RNP APCH

SBAS FAS Data Block Coding Data

FAS-DB (CRC wrapped data)

Operation type	0
SBAS provider ID	1
Airport identifier	LHBP
RWY	13L
Approach performance designator	0
Route indicator	
Reference path data selector	0
Reference path identifier	E13A
LTP/FTP latitude	472643.5200N
LTP/FTP longitude	0191527.1800E
LTP/FTP ellipsoidal height (m)	194.8
FPAP latitude	472521.7545N
FPAP longitude	0191739.2775E
Threshold crossing height (TCH)	15
TCH units	1
Glide path angle (degrees)	3.00
Course width at threshold (m)	105.00
Length offset (m)	40
Horizontal alert limit (m)	40.0
Vertical alert limit (m)	35.0
Computed Data Block	10 10 02 08 0C CD 00 00 01 33 31 05 80 82 5C 14 98 B2 43 08 9C 1B 35 81 FD 03 08 04 2C 81 2C 01 64 05 C8 AF 36 F8 33 69
Computed CRC	36F83369

FAS-DB (not CRC wrapped)

ICAO code	LH
LTP/FTP Orthometric height (m)	151.3
FPAP Orthometric height (m)	151.3

WAYPOINT COORDINATES

WP ID	Latitude	Longitude
NARUT	N47 40 52.8	E018 52 24.1
GIGAN	N47 41 17.3	E019 04 58.0
KESID	N47 31 47.2	E018 52 10.0
BP020	N47 36 51.5	E018 58 59.1
BP019	N47 31 54.7	E019 07 02.8
RW13L	N47 26 43.52	E019 15 27.18
BP017	N47 22 18.6	E019 22 34.5
TPS	N47 29 35.7	E019 26 46.4