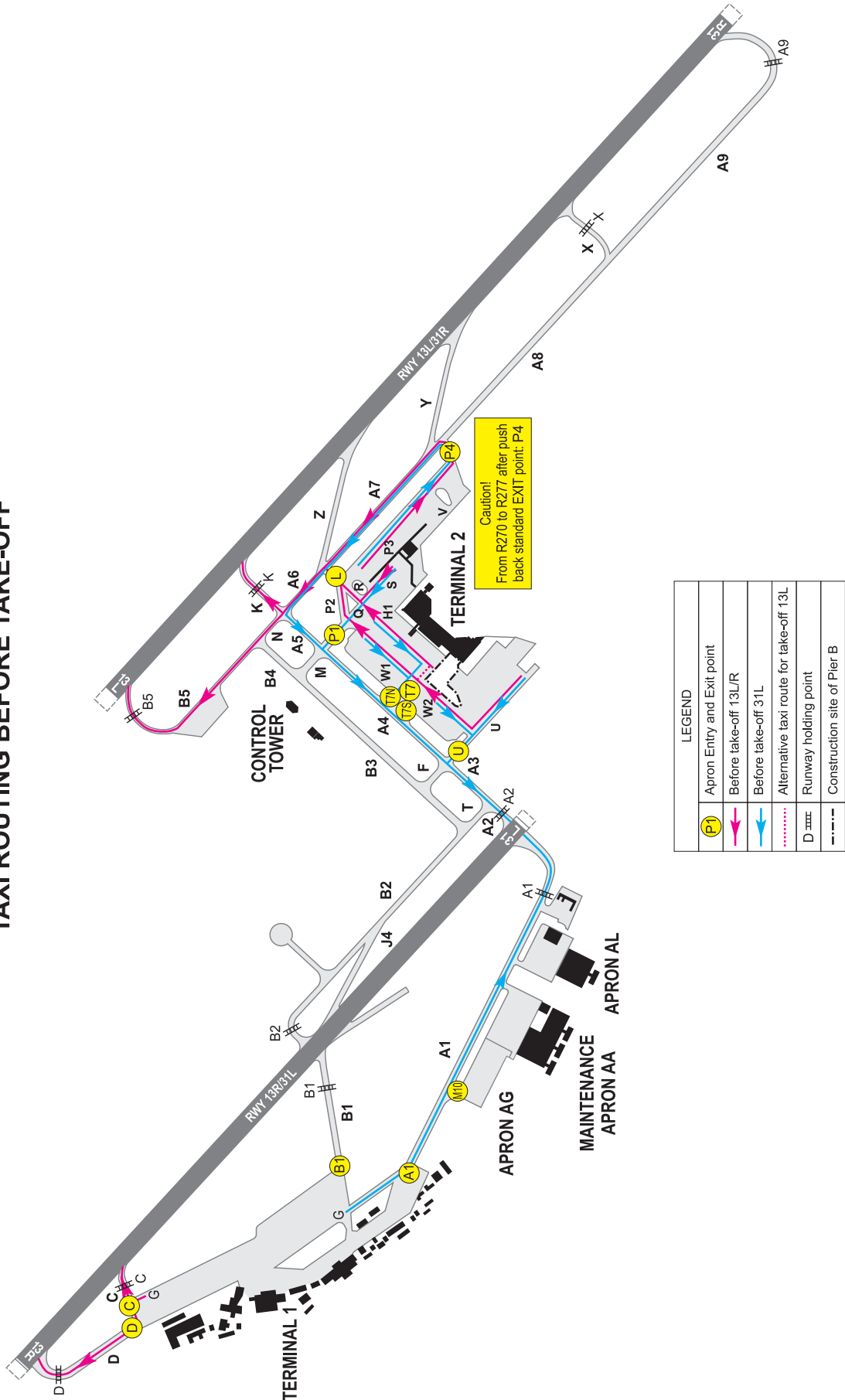


APPENDIX 2 TO AERODROME CHART - ICAO  
TAXI PROCEDURES FOR DEPARTING AIRCRAFT  
(PARALLEL RWY OPERATION)

BUDAPEST/LISZT FERENC

TAXI ROUTING BEFORE TAKE-OFF



**AD 2 LIST OF AVAILABLE TAXI CLEARANCES FOR DEPARTING AIRCRAFT  
ISSUED BY ATC**

Departures on RWY	From stands/gates	EXIT POINTS	Taxi route on Apron(taxilane or TWY segments) to be followed	HOLDING POINTS	Taxi route on the maneuvering area (TWY segments) to be followed	Terminal	Remarks
13L	31 - 34*	L	U-W2-W1-P2-L	K or B5 on request	L-A6-K or L-A6-N-B5	2	U after coordination; * Code D, E exit via U
	38 - 40*		H1-R-L				T7N after coordination; * Code E exit via T7 only
	42 - 43		W1-P2-L				P1 after coordination
	R210 - R212 R224 - R227						T7N or P1 after coordination
	R220 - R223						P1 after coordination
	44 - 45	S-R-L	L after coordination; * Code D, E exit P4 only				
	R270 - R277	P4	P3-P4		P4-A7-A6-K or P4-A7-A6-N-B5		
	R278 - R279*		V-P4				
13R	R101-R108 G150-172 R110-R117A*	C	G	C	C	1	* Code E, F exit via B1 only
		D	G	D	D		
	G130 - G141	M10/C M10/D	Apron taxilane/G	C D	C D		Follow the instructions
31L	31 - 34	U	U	A2	U-A3-A2	2	
	R220 - R223		W2-U				
	38 - 40*	T7N	T7N		T7N-A4-A3-A2		* Code E exit via T7 only ** Code D exit via P1, or L only
	42 - 43**		H1-T7N				
	R210 - R212 R224 - R227		W1-T7N				
	44 - 45	P1	S-Q-P1		P1-A4-A3-A2		
	R270 - R277	P4	P3-P4		P4-A7-A6-A5-A4-A3-A2		Code C only P1 after coordination; * Code D, E exit P4 only
	R278 - R279*		V-P4				
R101-R108 G150-G172 R110-R117A*	A1	G-A1	A1	A1	1	* Code D, E via B1 only	
G130 - G141	M10	Apron taxilane	A1 or B1 on request	A1 or B1	APRON AG		