

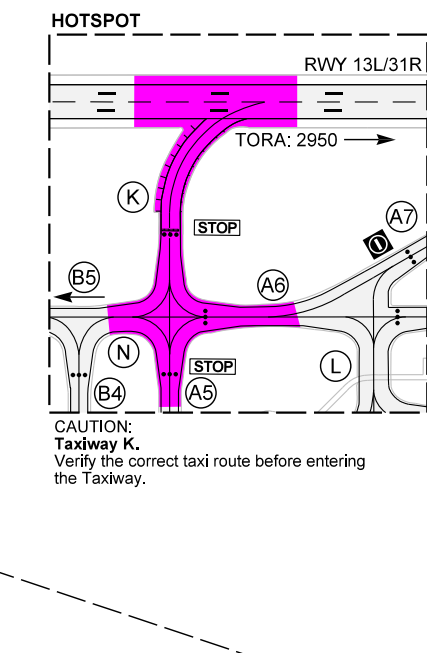
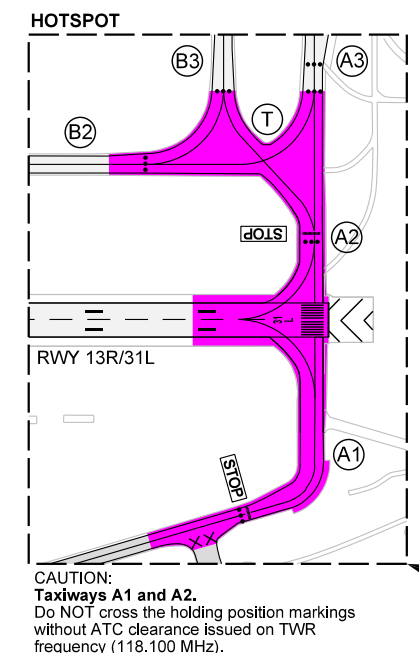
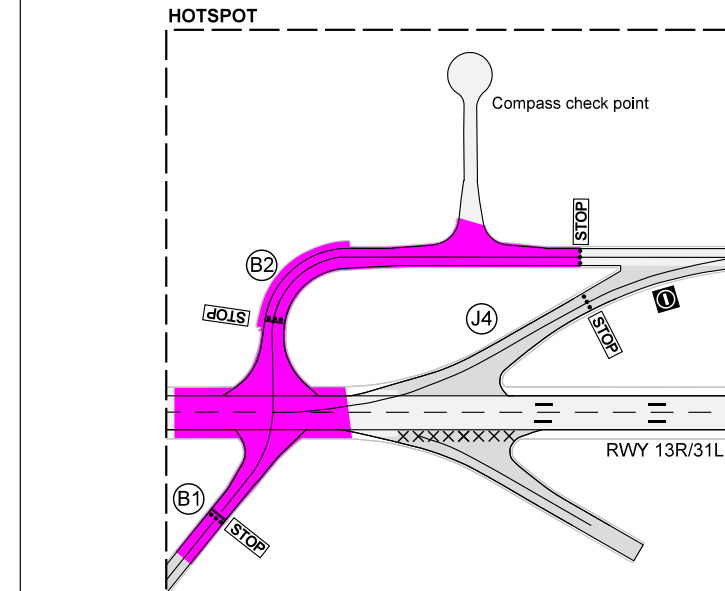
AERODROME CHART - ICAO

ARP
N47 26 22
E019 15 43 AERODROME ELEV 496

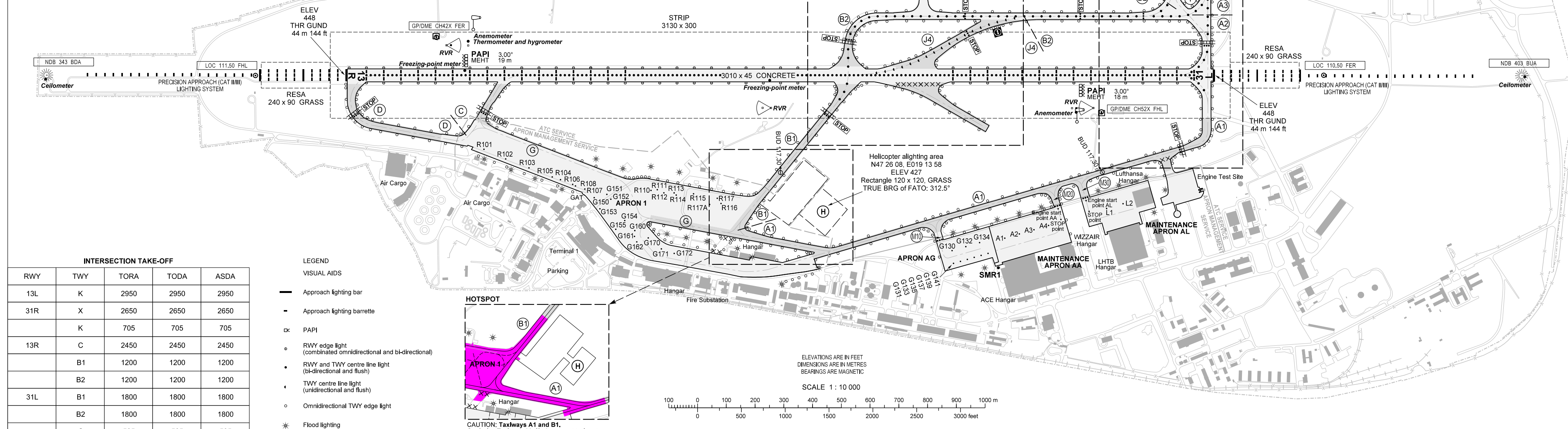
BUDAPEST APP 122 975	BUDAPEST TOWER 123 860	118 100	BUDAPEST APRON 1 131 555
119 510	BUDAPEST GROUND 121 910	BUDAPEST APRON 2 122 440	
BUDAPEST DELIVERY 134 540	ATIS 132 380		
BUDAPEST INFORMATION (NORTH) 119 350	ATIS (BUD VOR) 117 300		

RWY	DIRECTION	THR	BEARING STRENGTH	TORA	TODA	ASDA	LDA
13R	128°	N47 26 55, E019 13 15	PCN 65/R/B/X/T	3010	3010	3010	3010
31L	308°	N47 25 50, E019 15 01	PCN 65/R/B/X/T	3010	3010	3010	3010
13L	128°	N47 26 44, E019 15 27	PCN 75/R/B/X/T	3707	3707	3707	3707
31R	308°	N47 25 23, E019 17 38	PCN 75/R/B/X/T	3707	3707	3707	3707

Apron 1	PCN 50/R/B/X/T
Apron 2, APRON AG, APRON AA, APRON AL	PCN 75/R/B/X/T
Taxiways: A1, B1, C, D	PCN 60/F/B/X/T
Taxiways: A2-A9, B2-B5, F, K, L, M, N, T, U, X, Y, Z	PCN 75/R/B/X/T
Taxiway: J4	PCN 75/F/B/X/T
Taxiway width: 23 m, exception A1: 19 m.	
Remark: TWY A1 downgraded to code C ACFT (max. wingspan 36.00 m).	



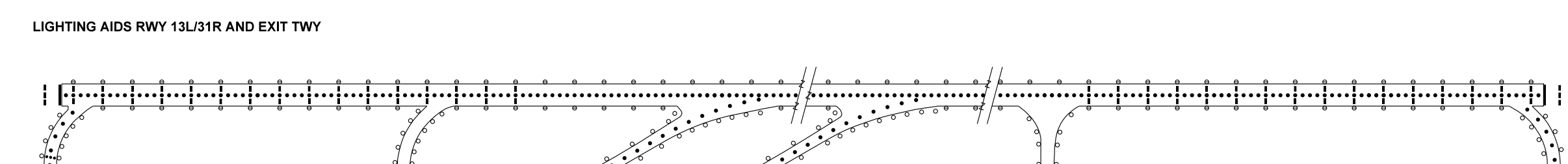
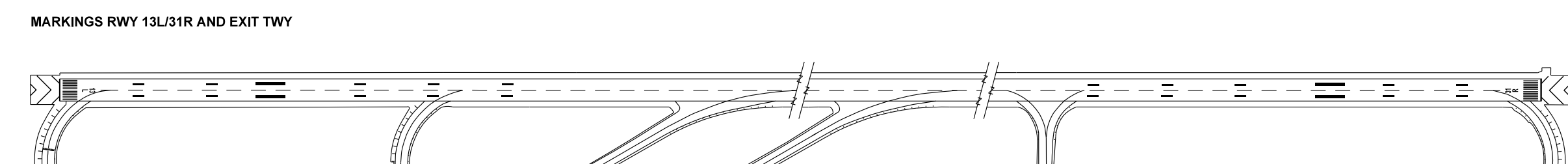
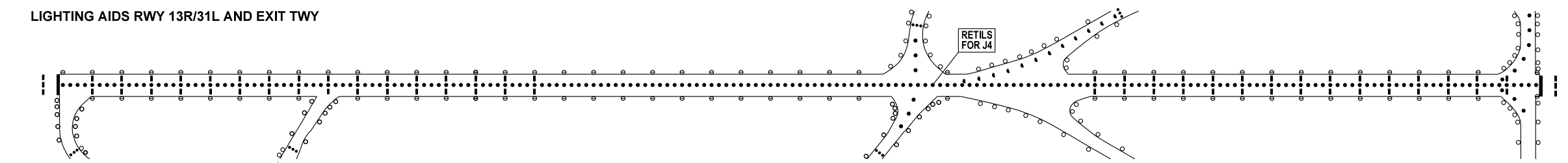
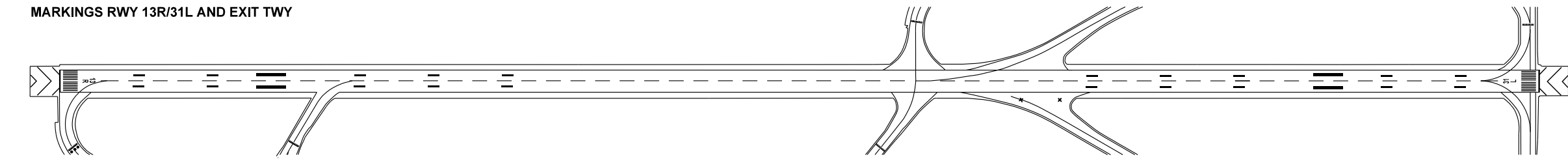
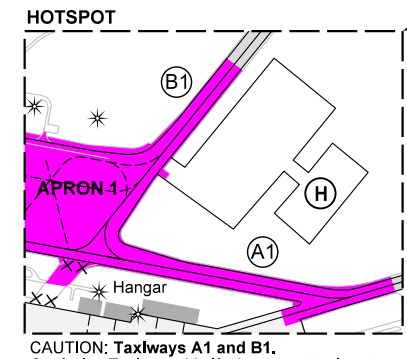
FOR BASIC CHART SYMBOLS SEE: GEN 2.3.
INS COORDINATES FOR AIRCRAFT STANDS SEE: PDC CHARTS.
TAXI PROCEDURES SEE: AD 2-LHBP-MISC CHARTS.
VISUAL DOCKING GUIDANCE SYSTEM: SAFEDOCK T2-18 AT PARKING POSITIONS 31-34, 42-45.
APRON ELEVATIONS: NOT AVAILABLE.
GEOGRAPHICAL COORDINATES FOR TWY CENTRE LINES: NOT AVAILABLE.
OBSTACLES TO TAXIING: NOT AVAILABLE.



INTERSECTION TAKE-OFF

RWY	TWY	TORA	TODA	ASDA
13L	K	2950	2950	2950
31R	X	2650	2650	2650
	K	705	705	705
13R	C	2450	2450	2450
	B1	1200	1200	1200
	B2	1200	1200	1200
31L	B1	1800	1800	1800
	B2	1800	1800	1800
	C	505	505	505

- LEGEND**
- Approach lighting bar
 - Approach lighting barrette
 - ⊙ PAPI
 - RWY edge light (combined omnidirectional and bi-directional)
 - RWY and TWY centre line light (bi-directional and flush)
 - TWY centre line light (unidirectional and flush)
 - Omnidirectional TWY edge light
 - * Flood lighting



- LIGHTING**
- RWY 13L/31R and RWY 13R/31L**
- Approach: Cat. II/III, High intensity white unidirectional (900 m), variable in 5 stages. From 900 m to 300 m flashing centre line.
 - Thresholds: Low intensity green unidirectional, variable in 5 stages, with 2x10 m wing bar lights.
 - Touchdown zone: High intensity white unidirectional, variable in 5 stages.
 - PAPI: 3.00° (METH: see in chart).
 - Runway edge: High intensity white unidirectional, variable in 5 stages. Last 600 m yellow. Low intensity white omnidirectional, variable in 5 stages. First and last 600 m yellow. Edge light spacing: 60 m.
 - Runway centre line: High intensity unidirectional, variable in 5 stages. White to 900 m before runway end. Red/white from 900 m to 300 m before runway end. Red on the last 300 m of runway. Center line light spacing: 15 m.
 - Runway ends: Low intensity red unidirectional.
- TWY**
- Taxiway edge: Low intensity omnidirectional blue.
 - Taxiway centre line: Low intensity unidirectional green on taxiways 2, Y and J4. Low intensity bi-directional green on taxiways A2-A9, F, B2-B5, N, T, and U.
 - STOP bars: Unidirectional red.
 - Apron: Low intensity red edge lights and floodlights.
 - Obstacle light: Low intensity red.

THIS PAGE IS INTENTIONALLY LEFT BLANK