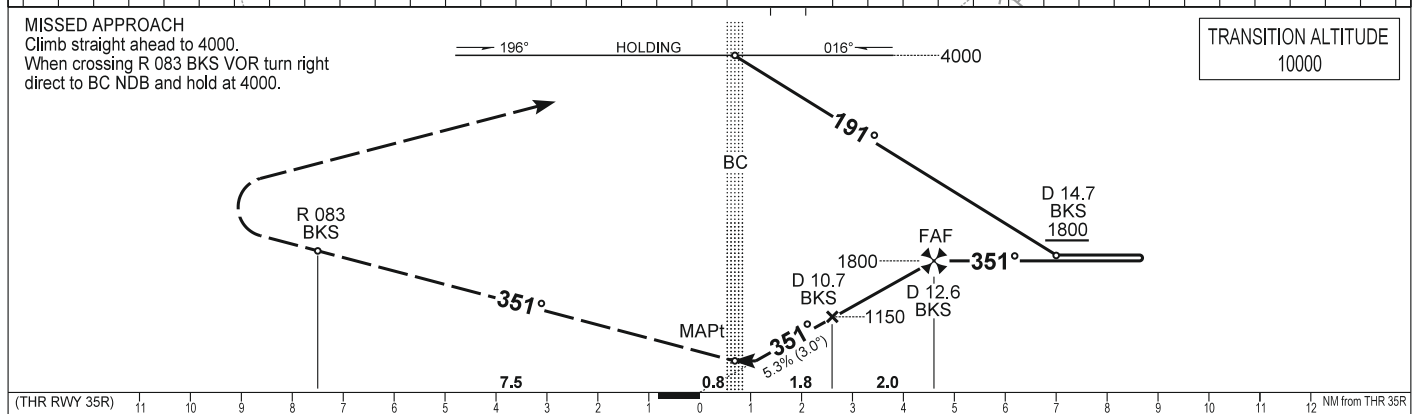
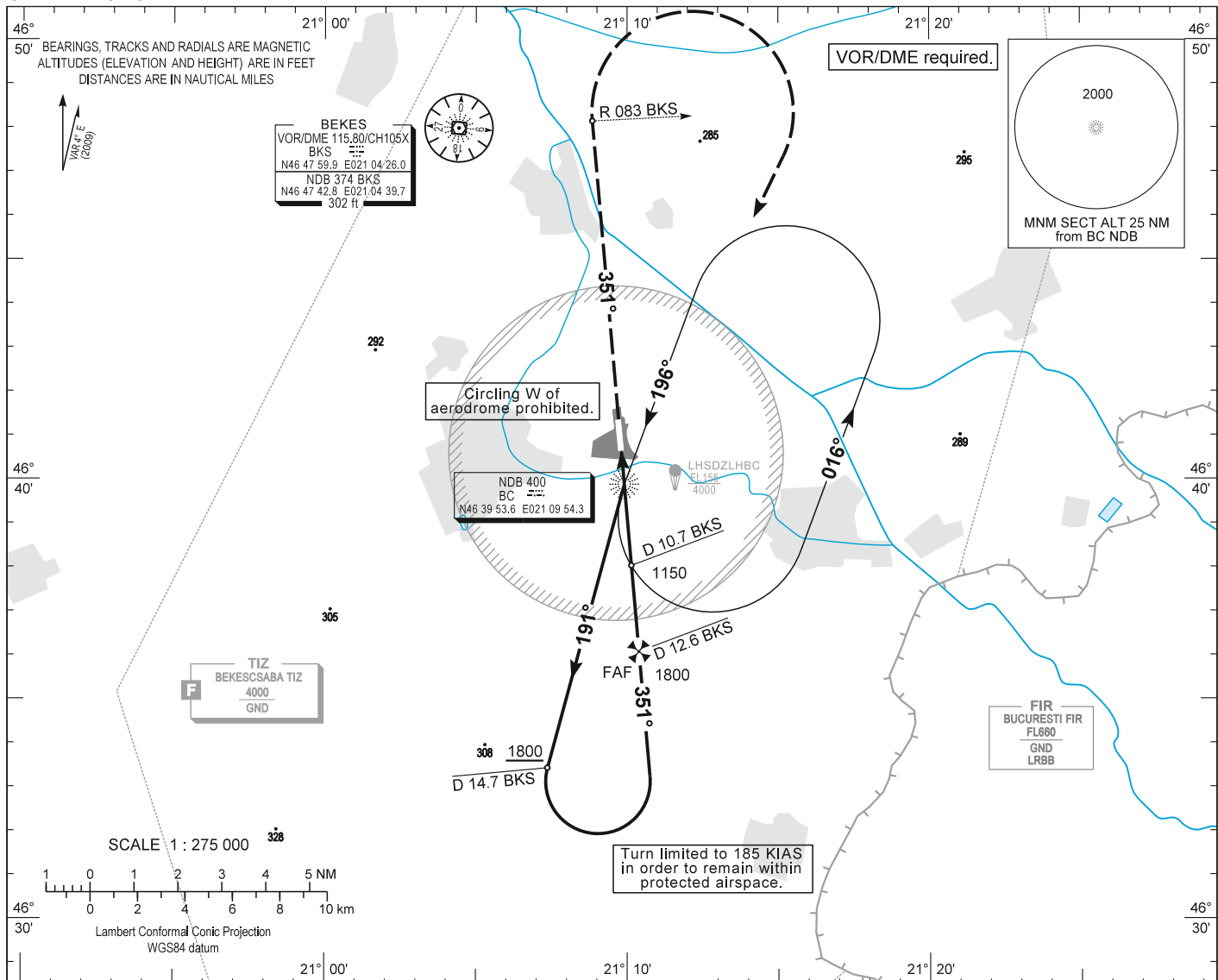


AIP HUNGARY

INSTRUMENT APPROACH CHART - ICAO  
AERODROME ELEV 286  
HEIGHTS RELATED TO THR RWY 35R - ELEV 286

BÉKÉSCSABA  
NDB RWY 35R  
(ACFT CAT A, B, C, D)

BÉKÉSCSABA INFO 123.260  
BUDAPEST INFORMATION (EAST) 133.000



(THR RWY 35R)		11	10	9	8	7	6	5	4	3	2	1	0	1	2	3	4	5	6	7	8	9	10	11	12	NM from THR 35R										
OCA (OCH)		A				B				C				D				GROUND SPEED					kt	60	90	120	150	180								
STRAIGHT-IN APPROACH		640 (360)																								FAF - MAPt 3.85 NM					MIN:sec	3:51	2:34	1:56	1:32	1:17
CIRCLING APPROACH W of aerodrome		ft AMSL	690	790	890	990																														
Not authorised.		VIS. m	1900	2800	3700	4600																														

## AD 2 LHBC INSTRUMENT APPROACH CHART NDB RWY 35R

### Approach from BC NDB:

Initial altitude: 4000.

Fly outbound on 191° and descend to 1800 or above.

At D 14.7 BKS DME turn left (185 KIAS max.) to 351° inbound BC NDB.

At D 12.6 BKS DME leave 1800 and descend to 1150. D 10.7 BKS VOR descend to 630.

### Holding procedure:

Holding fix: BC NDB.

Left hand holding pattern.

Inbound track: 196°

Outbound track: 016°

Rate of turn: 3°/sec. or 25° bank angle  
(whichever requires lesser bank)

Outbound timing: 1 min.

Minimum holding altitude: 4000

**Final approach descent: 3.00°**