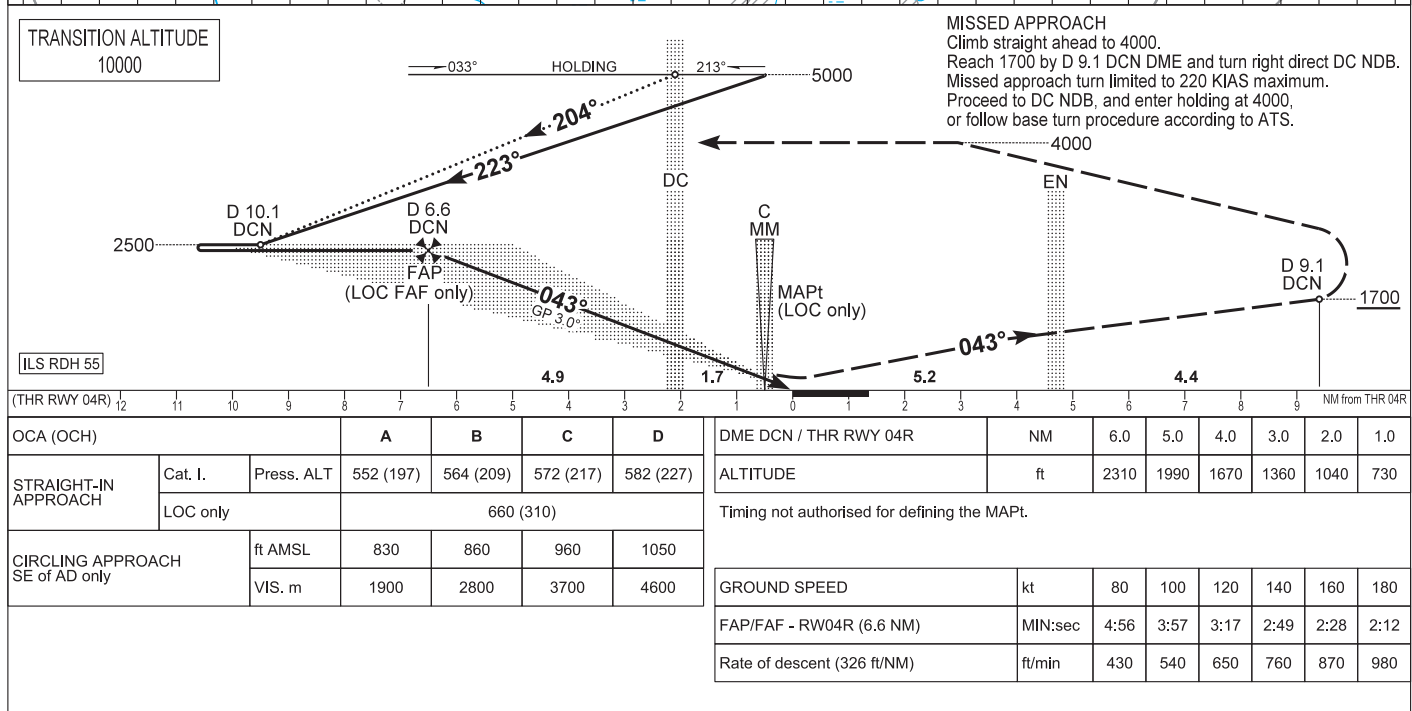
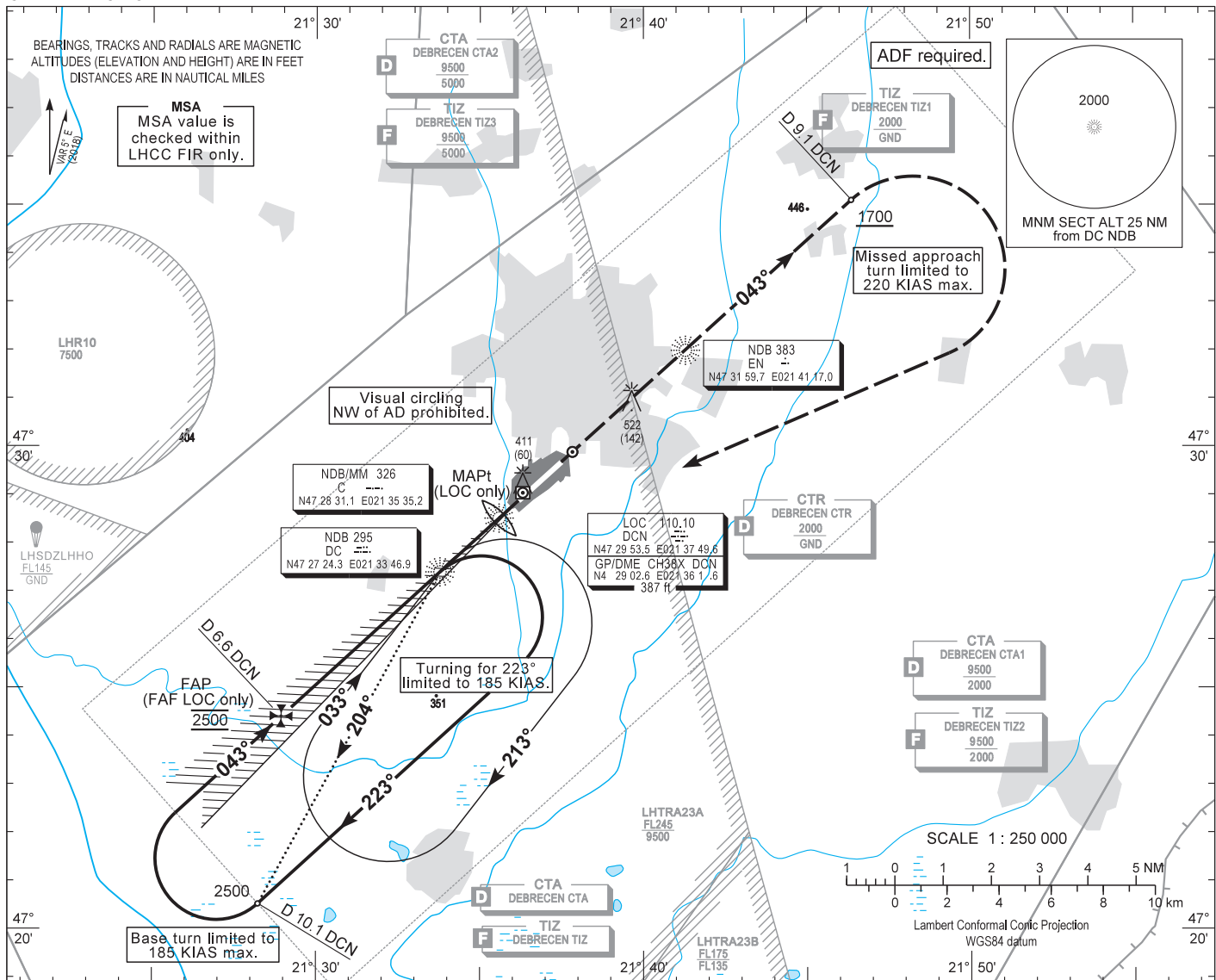


AIP HUNGARY

INSTRUMENT APPROACH CHART - ICAO
AERODROME ELEV 361
HEIGHTS RELATED TO THR RWY 04R - ELEV 355

DEBRECEN TOWER 125.910
DEBRECEN INFO 125.910
BUDAPEST INFORMATION (EAST) 133.000

DEBRECEN ILS or LOC RWY 04R
(ACFT CAT A, B, C, D)



AD 2 LHDC INSTRUMENT APPROACH CHART ILS OR LOC RWY 04R

ILS approach from DC NDB (Holding):

Initial altitude: 5000.

When crossing DC NDB holding fix turn right to heading 223° (185 KIAS max.) and descend to 2500.

Fly outbound and after 2.5 min, or at D 10.1 DCN DME, whichever is earlier turn right (185 KIAS max.) to intercept DCN LOC 043°.

Glide path interception at D 6.6 DCN DME(descent fix), then follow ILS.

Base turn ILS approach from DC NDB:

Available at ATC discretion only.

When crossing DC NDB fly outbound on track 204° (QDR 204°) and descend to 2500.

At D 10.1 DCN DME turn right (185 KIAS max.) to intercept DCN LOC 043°, then follow ILS.

Holding procedure:

Holding fix: DC NDB.

Right hand holding pattern.

Maximum speed: 220 KIAS

Inbound track: 033°

Outbound track: 213°

Rate of turn: 3°/sec. or 25° bank angle
(whichever requires lesser bank)

Outbound timing: 1 min.

Minimum holding altitude: 5000

4000 for Missed Approach