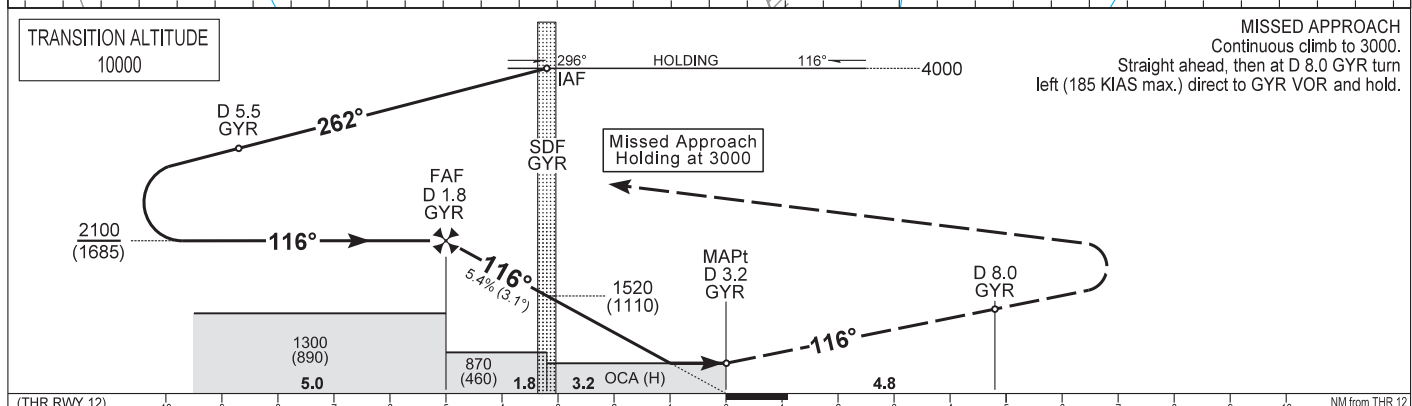
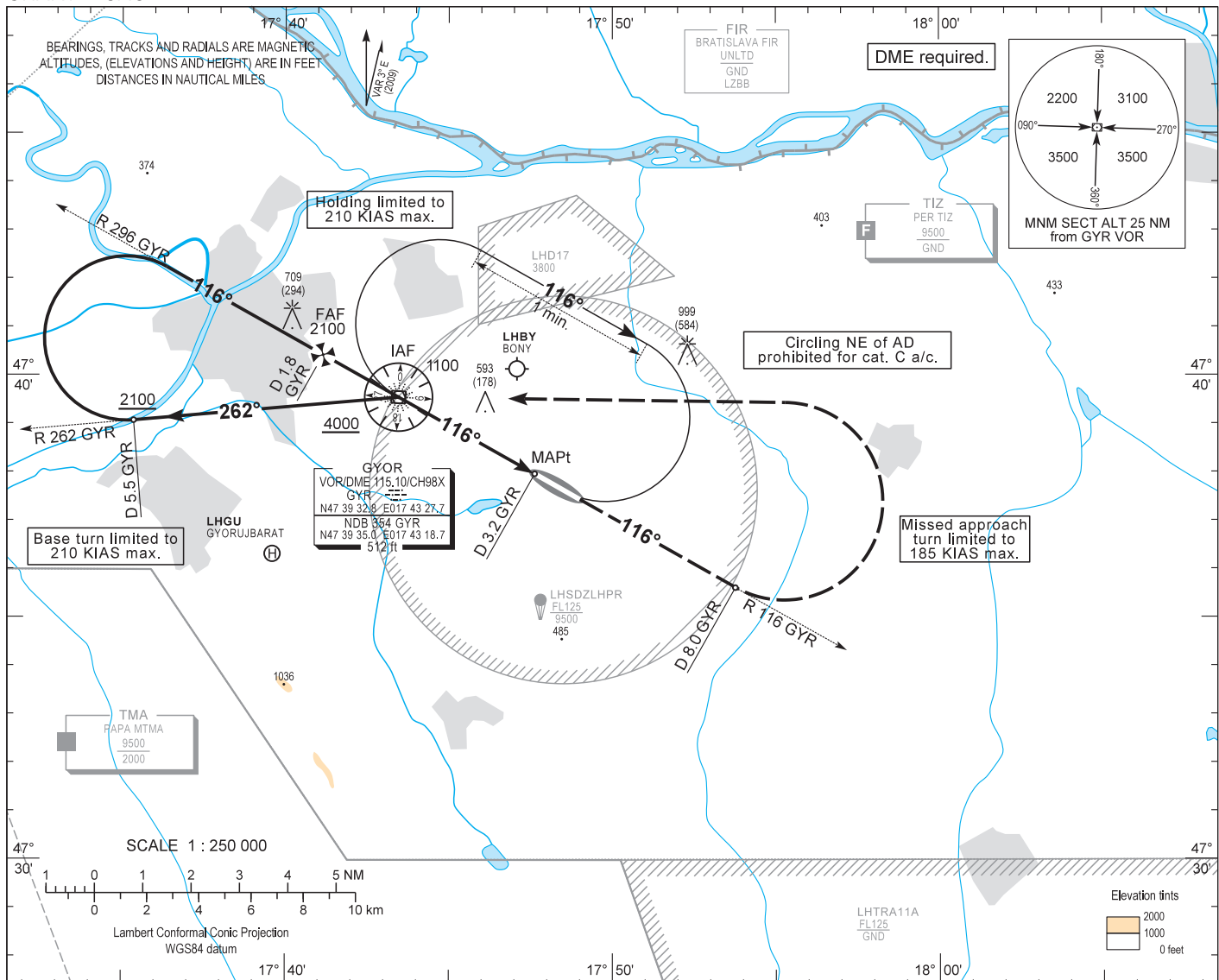


AIP HUNGARY

INSTRUMENT APPROACH CHART - ICAO
AERODROME ELEV 426
HEIGHTS RELATED TO THR RWY 12 - ELEV 415

PÉR INFO 129.900
BUDAPEST INFORMATION (WEST) 125.500

GYŐR/PÉR
VOR RWY 12
(ACFT CAT A, B, C)



OCA (H)		A	B	C				
STRAIGHT-IN APPROACH	VOR	840 (430)						
	ft AMSL	890 (480)	930 (520)	1140 (730) SW of AD only				
CIRCLING APPROACH								
		VIS. m	1900	2800	3700			

CDFA with GYR DME	NM	1.0 inbound	0.0	1.0 outbound	2.0	
	ALT	ft	1840	1520	1190	860
	(HGT)	ft	(1430)	(1110)	(780)	(450)

Timing not authorized to define the MAPt.

GROUND SPEED	kt	70	100	130	160
FAF - MAPt 5.0 NM	MIN:sec	4:17	3:00	2:18	1:53
VSP	ft/min	380	540	710	870

AD 2 LHPR INSTRUMENT APPROACH CHART VOR RWY 12

FIX	LATITUDE	LONGITUDE	FIX FORMATION
IAF	N47 39 32.8	E017 43 27.7	GYR VOR
FAF	N47 40 25.3	E017 41 09.0	R 296 GYR VOR / D 1.8 GYR DME
SDF	N47 39 32.8	E017 43 27.7	GYR VOR
MAPt	N47 37 58.3	E017 47 35.0	R 296 GYR VOR / D 3.2 GYR DME
MA TP	N47 35 36.7	E017 53 45.6	R 296 GYR VOR / D 8.0 GYR DME

Approach from GYR VOR:

Initial alt: 4000.
Leave GYR VOR on R 262 and descend to altitude 2100.
At D 5.5 GYR VOR turn right and intercept R 296 GYR VOR inbound for final RWY 12.
Maximum turning speed 210 KIAS.
At D 1.8 GYR VOR descend 870.
After passing step down fix at GYR VOR descend 840.

Approach holding procedure:

Holding fix: GYR VOR.
Maximum speed: 210 KIAS
Inbound track: 296°
Outbound track: 116°
Turns: Right
Outbound timing: 1 min.
Minimum holding altitude: 4000 (3000 for Missed Approach)
MOCA: 2000
Entry: Omnidirectional

Final approach descent: 3.08°