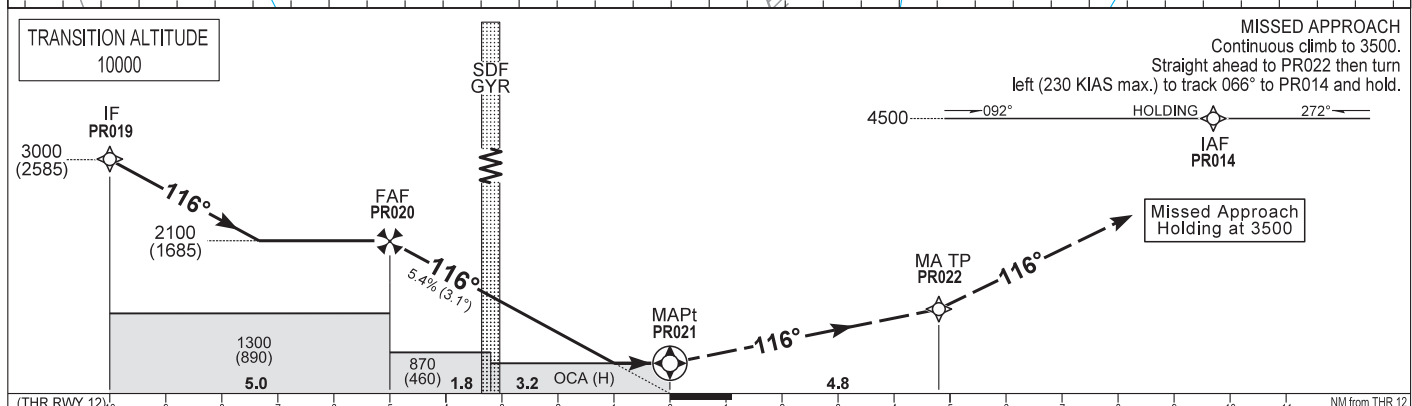
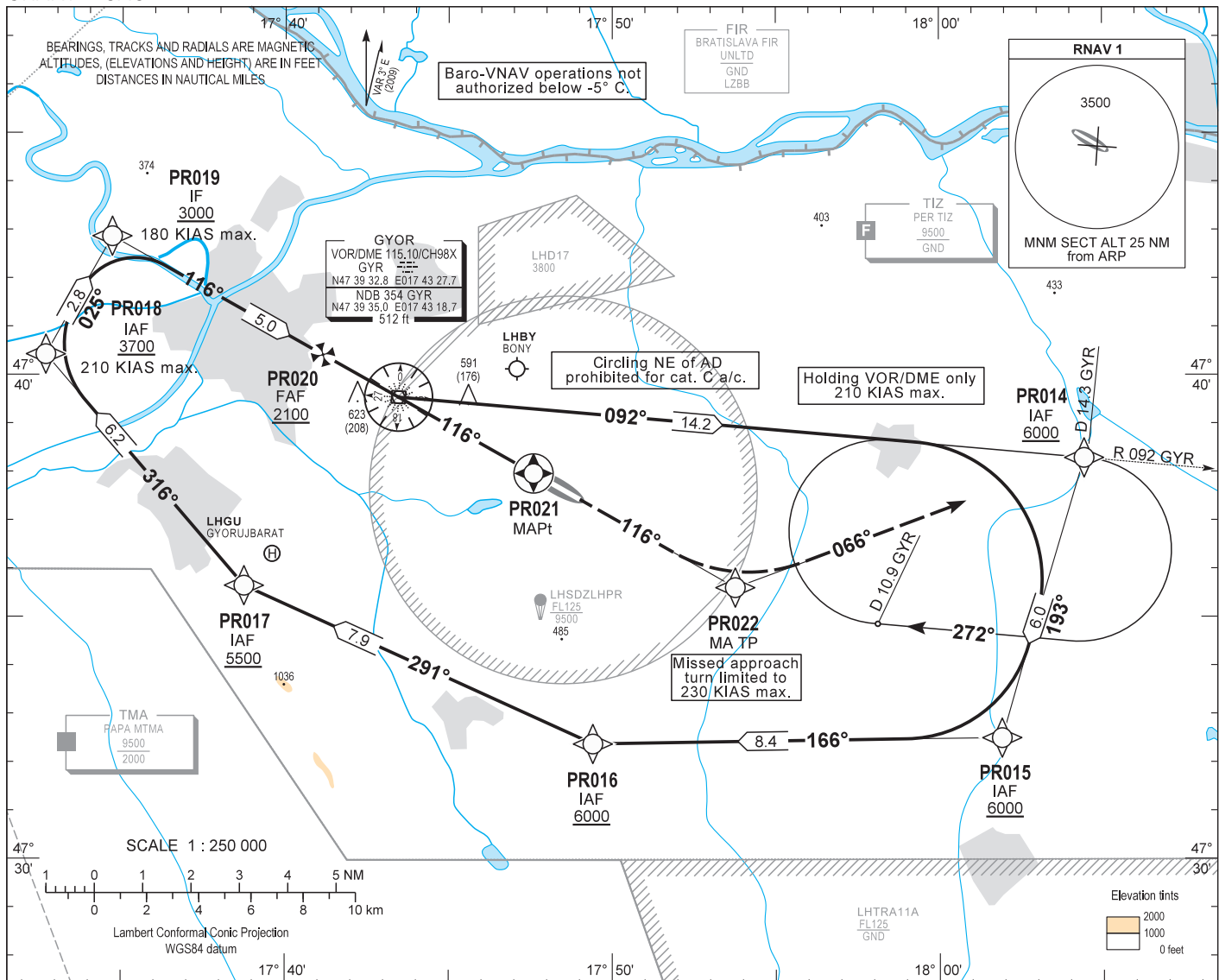


AIP HUNGARY

INSTRUMENT APPROACH CHART - ICAO  
AERODROME ELEV 426  
HEIGHTS RELATED TO THR RWY 12 - ELEV 415

PÉR INFO 129.900  
BUDAPEST INFORMATION (WEST) 125.500

GYŐR/PÉR  
RNAV<sup>(GNSS)</sup> RWY 12  
(ACFT CAT A, B, C)



|                      |             |           |           |                             |
|----------------------|-------------|-----------|-----------|-----------------------------|
| OCA (H)              |             | A         | B         | C                           |
| STRAIGHT-IN APPROACH | LNAV        | 770 (360) |           |                             |
|                      | LNAV / VNAV | 730 (320) |           |                             |
| CIRCLING APPROACH    | ft AMSL     | 890 (480) | 930 (520) | 1140 (730)<br>SW of AD only |
|                      | VIS. m      | 1900      | 2800      | 3700                        |

|                             |    |        |        |        |       |       |
|-----------------------------|----|--------|--------|--------|-------|-------|
| CDFA with distance to PR021 | NM | 5.0    | 4.0    | 3.0    | 2.0   | 1.0   |
| ALT                         | ft | 2100   | 1780   | 1460   | 1130  | 810   |
| (HGT)                       | ft | (1690) | (1370) | (1050) | (720) | (400) |

Timing not authorized to define the MAPt.

|                   |         |      |      |      |      |
|-------------------|---------|------|------|------|------|
| GROUND SPEED      | kt      | 70   | 100  | 130  | 160  |
| FAF - MAPt 5.0 NM | MIN:sec | 4:17 | 3:00 | 2:18 | 1:53 |
| VSP               | ft/min  | 380  | 540  | 710  | 870  |

**AD 2 LHPR INSTRUMENT APPROACH CHART RNAV<sub>(GNSS)</sub> RWY 12**

| Serial Number | Path Descriptor | Waypoint Identifier | Fly-over | Course °M (°T) | Magnetic Variation (2009) | Distance (NM) | Turn Direction | Altitude (ft) | Speed (KIAS) | VPA/TCH  | Navigation Specification |
|---------------|-----------------|---------------------|----------|----------------|---------------------------|---------------|----------------|---------------|--------------|----------|--------------------------|
| 001           | IF              | GYR                 |          |                | +3.4                      |               |                | +6000         |              |          | RNP APCH                 |
| 002           | TF              | PR014               | -        | 092 (095.0)    | +3.4                      | 14.2          | -              | +6000         |              |          | RNP APCH                 |
| 003           | TF              | PR015               | -        | 193 (196.6)    | +3.4                      | 6.0           | -              | +6000         |              |          | RNP APCH                 |
| 004           | TF              | PR016               | -        | 266 (269.1)    | +3.4                      | 8.4           | -              | +6000         |              |          | RNP APCH                 |
| 005           | TF              | PR017               | -        | 291 (294.5)    | +3.4                      | 7.9           | -              | +5500         |              |          | RNP APCH                 |
| 006           | TF              | PR018               | -        | 316 (319.5)    | +3.4                      | 6.2           | -              | +3700         | -210         |          | RNP APCH                 |
| 007           | TF              | PR019               | -        | 026 (029.5)    | +3.4                      | 2.8           | -              | +3000         | -180         |          | RNP APCH                 |
| 008           | TF              | PR020               | -        | 116 (119.5)    | +3.4                      | 5.0           | -              | +2100         |              |          | RNP APCH                 |
| 009           | TF              | PR021               | Y        | 116 (119.5)    | +3.4                      | 5.0           | -              | @770          |              | -3.08/49 | RNP APCH                 |
| 010           | TF              | PR022               | -        | 116 (119.5)    | +3.4                      | 4.8           | -              | -             | -230         |          | RNP APCH                 |
| 011           | HM              | PR014               | -        | 066 (069.5)    | +3.4                      | 7.7           | -              | +3500         |              |          | RNP APCH                 |

**WAYPOINT COORDINATES  
AD 2-LHPR-RNAV<sub>(GNSS)</sub> 12**

| WAYPOINT | LATITUDE    | LONGITUDE    | REMARK |
|----------|-------------|--------------|--------|
| PR014    | N47 38 17.4 | E018 04 25.7 | IAF    |
| PR015    | N47 32 30.2 | E018 01 54.4 | IAF    |
| PR016    | N47 32 22.9 | E017 49 24.5 | IAF    |
| PR017    | N47 35 39.3 | E017 38 44.7 | IAF    |
| PR018    | N47 40 25.6 | E017 32 40.2 | IAF    |
| PR019    | N47 42 52.1 | E017 34 41.8 | IF     |
| PR020    | N47 40 25.3 | E017 41 09.0 | FAF    |
| PR021    | N47 37 58.3 | E017 47 35.6 | MAPt   |
| PR022    | N47 35 36.7 | E017 53 45.6 | MA TP  |

**Approach holding procedure:**

Holding fix: PR014.  
 Maximum speed: 210 KIAS  
 Inbound track: 092°  
 Outbound track: 272°  
 Turns: Right  
 Outbound timing: 1 min.  
 Minimum holding altitude: 4500 (3500 for Missed Approach)  
 MOCA: 2000  
 Entry: Sector 1 (parallel) and Sector 2 (offset) entries prohibited

Final approach descent: 3.10°