

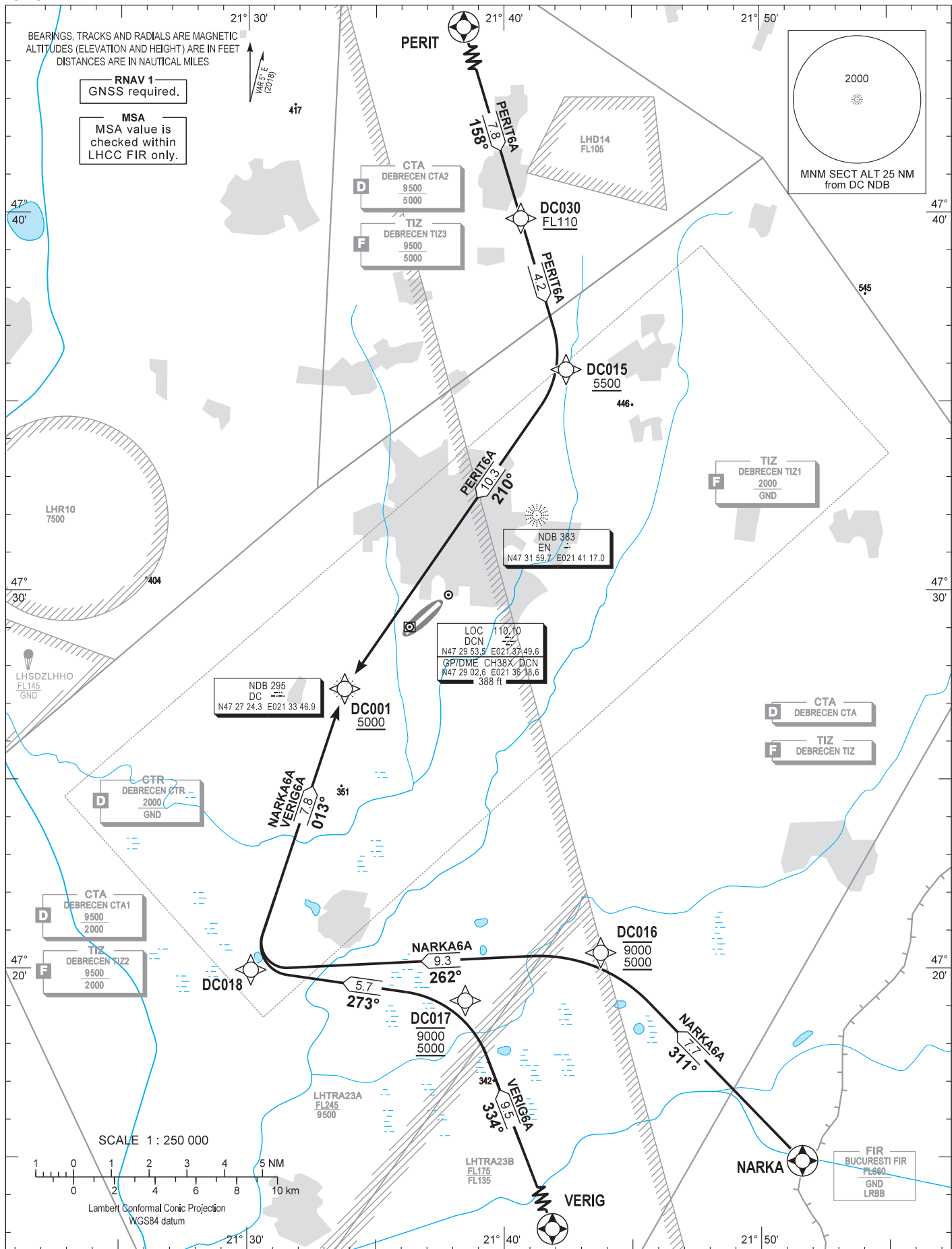
AIP HUNGARY

STANDARD ARRIVAL CHART -
INSTRUMENT (STAR) -
ICAO

TRANSITION ALTITUDE
10000

| | |
|-----------------------------|---------|
| DEBRECEN TOWER | 125.900 |
| DEBRECEN INFO | 125.900 |
| BUDAPEST INFORMATION (EAST) | 133.000 |

DEBRECEN
RNAV RWY 04R / 22L
NARKA6A PERIT6A VERIG6A



AD 2 LHDC STANDARD ARRIVAL CHART INSTRUMENT RWY 04R / 22L

| NAME | PROCEDURE | RESRICTIONS | DESCENT | R/T FAILURE |
|----------------|---|-----------------|---|---|
| PERIT6A | To DC030 at or above FL110. To DC015 at or above 5500. To DC001 at or above 5000. | Max 250 KT KIAS | When passing a fix, facility or waypoint, descent have to be initiated without delay to the lowest authorized level (depicted on the chart or by ATC) of the following segment. | If an arriving controlled aircraft experiencing R/T failure, it shall follow the STAR to 5000, fly a standard entry into the DC holding and 1 more holding pattern, after which a basic instrument approach procedure shall be initiated according to the known wind direction. |
| NARKA6A | To DC016 between 5000 and 9000. To DC018, to DC001 at or above 5000. | | | |
| VERIG6A | To DC017 between 5000 and 9000. To DC018, to DC001 at or above 5000. | | | |

**WAYPOINT COORDINATES
AD 2-LHDC-RNAV_(GNSS) STAR**

| WAYPOINT | LATITUDE | LONGITUDE | WAYPOINT TYPE |
|--------------|-------------|--------------|---------------|
| NARKA | N47 14 54.5 | E021 51 35.8 | FLYOVER |
| PERIT | N47 47 18.0 | E021 37 22.0 | FLYOVER |
| VERIG | N47 10 20.0 | E021 43 29.0 | FLYOVER |
| DC001 | N47 27 24.2 | E021 33 46.9 | FLY-BY |
| DC015 | N47 35 51.1 | E021 42 25.6 | FLY-BY |
| DC016 | N47 20 25.3 | E021 43 45.6 | FLY-BY |
| DC017 | N47 19 09.5 | E021 38 29.2 | FLY-BY |
| DC018 | N47 19 58.2 | E021 30 08.1 | FLY-BY |
| DC030 | N47 39 51.1 | E021 40 39.8 | FLY-BY |