

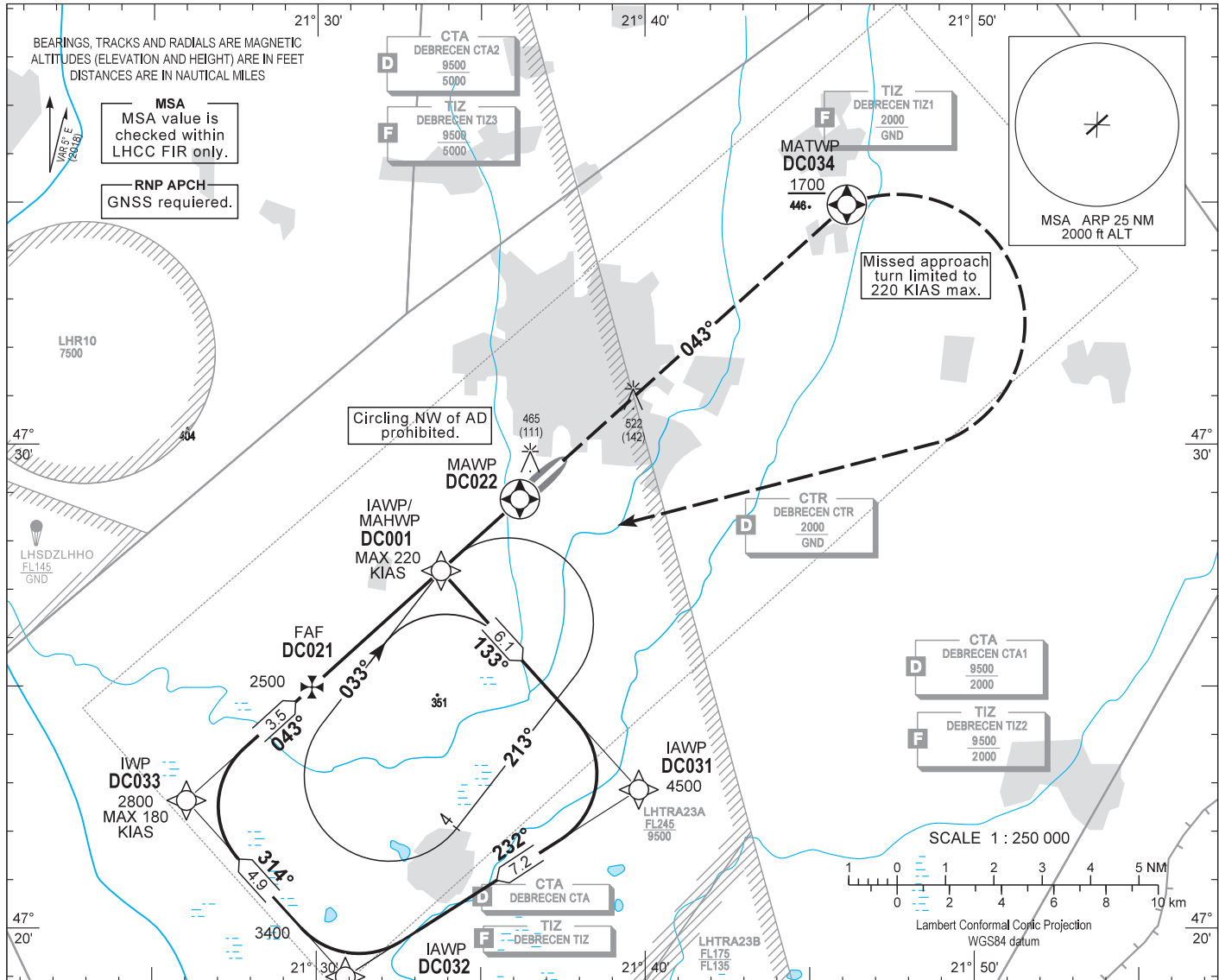
AIP HUNGARY

INSTRUMENT APPROACH CHART - ICAO

AERODROME ELEV 361
HEIGHTS RELATED TO THR RWY 04R - ELEV 355

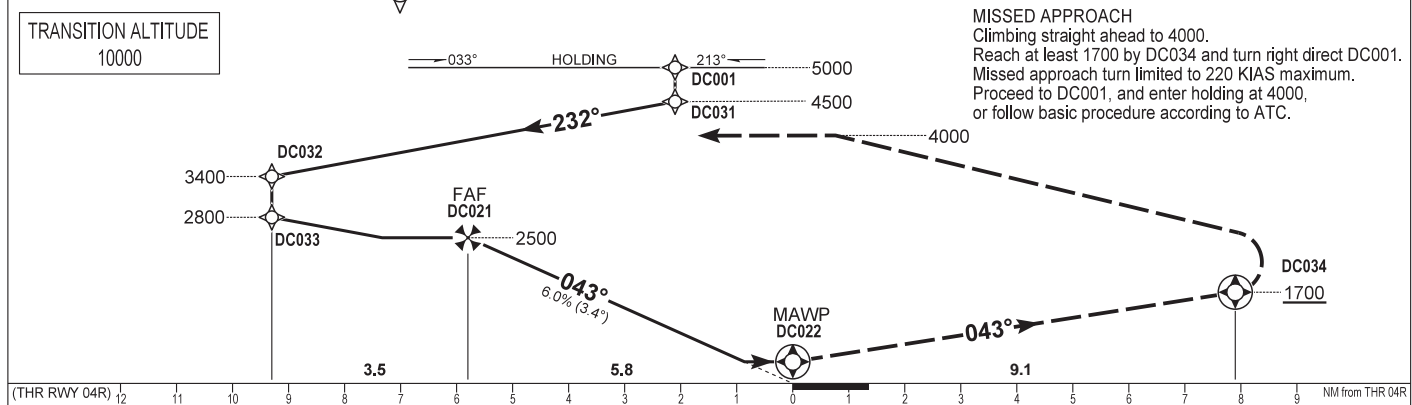
DEBRECEN TOWER 125.900
DEBRECEN INFO 125.900
BUDAPEST INFORMATION (EAST) 133.000

DEBRECEN
RNAV^(GNSS) RWY 04R
(ACFT CAT A, B, C, D)



TRANSITION ALTITUDE
10000

MISSED APPROACH
Climbing straight ahead to 4000.
Reach at least 1700 by DC034 and turn right direct DC001.
Missed approach turn limited to 220 KIAS maximum.
Proceed to DC001, and enter holding at 4000, or follow basic procedure according to ATC.



(THR RWY 04R)	12	11	10	9	8	7	6	5	4	3	2	1	0	1	2	3	4	5	6	7	8	9	NM from THR 04R										
OCA (OCH)	A				B				C				D				DIST THR / RWY 04R					NM	5.0	4.0	3.0	2.0	1.0						
STRAIGHT-IN APPROACH	700 (340)																						ALTITUDE					ft	2230	1870	1500	1140	770
CIRCLING APPROACH SE of AD only	ft AMSL	830	860	960	1050	Timing not authorised for defining the MAPt.																											
	VIS. m	1900	2800	3700	4600	GROUND SPEED					kt	60	90	120	150	180																	
FAWP - MAWP 5.79 NM													MIN:sec					5:48	3:51	2:54	2:19	1:56											

AD 2 LHDC INSTRUMENT APPROACH CHART RNAV_(GNSS) RWY 04R

Only aircraft, equipment and aircrew **approved by the State of the Operator** to carry out GNSS approaches, may use the procedure.

PT	WP ID	OverFly	Bearing/ (Len Dur)	Turn Direction	Altitude (FT)	IAS (KT)	VRT ANG	NAV PERF
IF	DC001	@5000	-220	...	RNP APCH
TF	DC031	...	137.9 T/6.1 NM	...	4500	RNP APCH
TF	DC032	...	237.4 T/7.2 NM	...	3400	RNP APCH
TF	DC033	...	317.9 T/4.9 NM	...	2800	-180	...	RNP APCH
TF	DC021	...	047.8 T/3.5 NM	...	2500	RNP APCH
TF	DC022	Y	047.8 T/5.8 NM	...	+700	...	-3.4°	RNP APCH
TF	DC034	Y	047.9 T/9.1 NM	...	+1700	-220	...	RNP APCH
DF	DC001	R	@4000	-220	...	RNP APCH
HM	DC001	...	038.0 T/1 min	R	@4000	-220	...	RNP APCH

Holding procedure:

Holding fix: DC001.

Right hand holding pattern.

Maximum speed: 220 KIAS

Inbound track: 033°

Outbound track: 213°

Rate of turn: 3°/sec. or 25° bank angle

(whichever requires lesser bank)

Outbound time: 1 min

Minimum holding altitude: 5000

4000 for Missed Approach

WAYPOINT COORDINATES AD 2-LHDC-RNAV_(GNSS) 04R

WAYPOINT	LATITUDE	LONGITUDE	REMARK
DC001	N47 27 24.2	E021 33 46.9	IAWP
DC031	N47 22 52.9	E021 39 48.3	IAWP
DC032	N47 19 00.5	E021 30 53.1	IAWP
DC033	N47 22 38.8	E021 26 02.3	IWP
DC021	N47 24 59.7	E021 29 51.3	FAF
DC022	N47 28 53.0	E021 36 10.9	MAWP
DC034	N47 34 58.0	E021 46 09.8	MATWP
DC001	N47 27 24.2	E021 33 46.9	MAHWP