

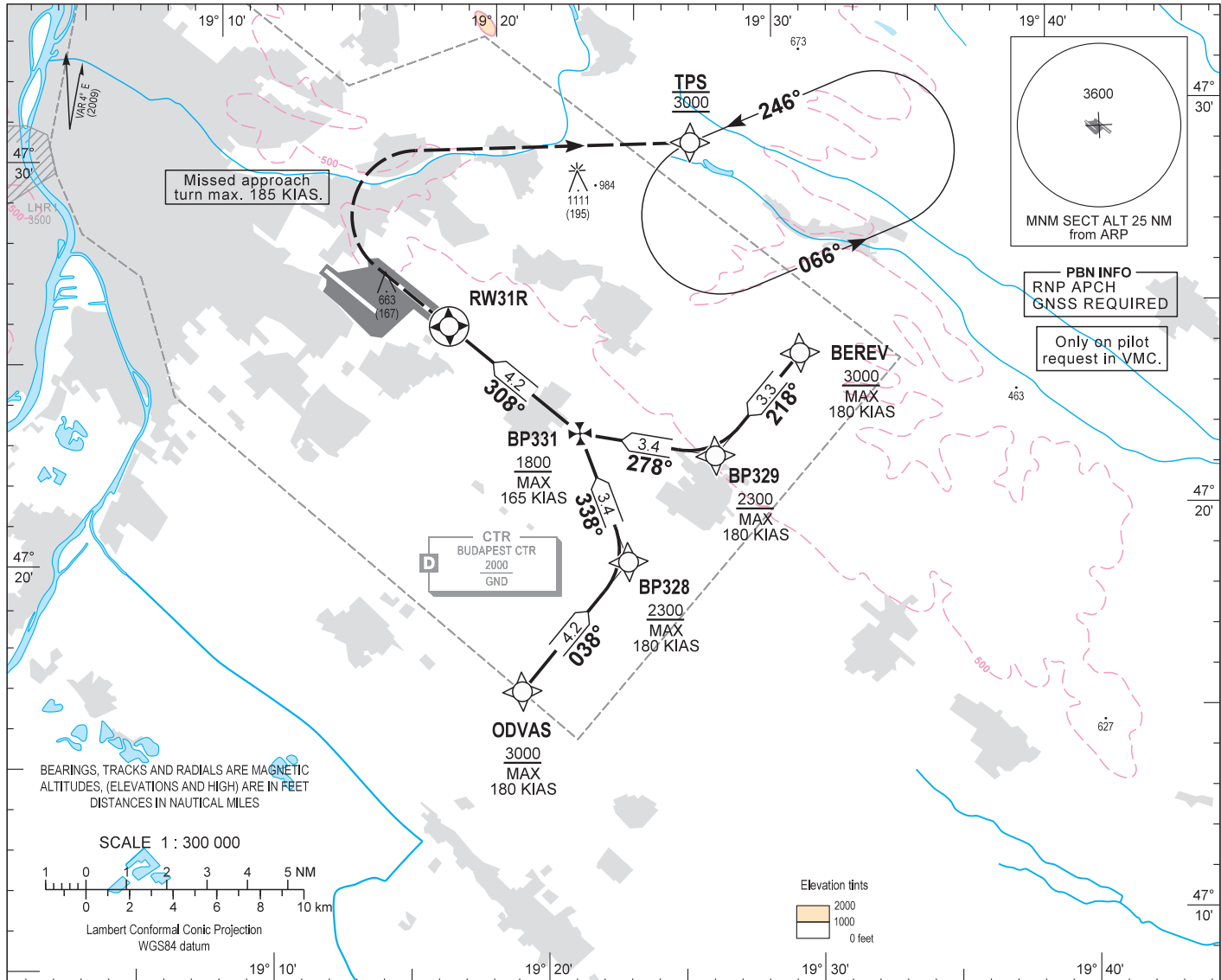
AIP HUNGARY

INSTRUMENT  
APPROACH  
CHART - ICAO

AERODROME ELEV 496  
HEIGHTS RELATED TO  
THR RWY 31R - ELEV 416

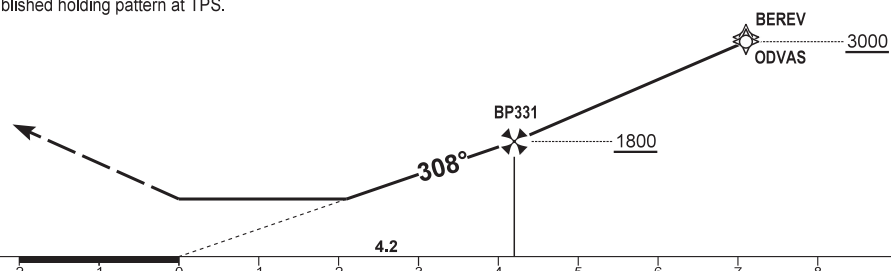
|                   |         |                 |                   |
|-------------------|---------|-----------------|-------------------|
| BUDAPEST APPROACH | 129.700 | ATIS            | 132.380 (117.300) |
|                   | 122.975 | BUDAPEST TOWER  | 118.100           |
|                   | 119.500 | BUDAPEST GROUND | 121.900           |

BUDAPEST/LISZT FERENC  
RNAV<sub>(GNSS)</sub> Y RWY 31R  
(ACFT CAT A, B, C)



**MISSED APPROACH**  
Climb to 3000 on runway heading.  
When passing 900 turn right to TPS.  
Maximum turning speed 185 KIAS.  
At 3000 enter published holding pattern at TPS.

TRANSITION ALTITUDE  
10000



(THR RWY 31R) 2 1 0 1 2 3 4 5 6 7 8 9 10 11 12 NM from THR 31R

|             |      |           |            |   |
|-------------|------|-----------|------------|---|
| CAT OF ACFT |      | A         | B          | C |
| OCA (H)     | LNAV | 2.5% macg | 1300 (884) |   |

|                   |    |      |      |      |      |
|-------------------|----|------|------|------|------|
| DIST THR / RWY31R | NM | 6.0  | 5.0  | 4.0  | 3.0  |
| ALTITUDE          | ft | 2380 | 2060 | 1740 | 1420 |

**VISUAL APPROACH RWY 31R**  
VMC  
CEILING - VISIBILITY  
1500' AGL - 5 KM

|                               |         |      |      |      |      |      |      |
|-------------------------------|---------|------|------|------|------|------|------|
| GS                            | kt      | 80   | 100  | 120  | 140  | 160  | 180  |
| BP331 - RWY31R (4.2 NM)       | min:sec | 4:47 | 3:50 | 3:12 | 2:44 | 2:24 | 2:08 |
| Rate of descent (326.1 ft/NM) | ft/min  | 430  | 540  | 650  | 760  | 860  | 970  |

## AD 2 LHBP INSTRUMENT APPROACH CHART RNAV<sub>(GNSS)</sub> Y RWY 31R

via BEREV

| PT | WP ID | Flx role | OverFly | Bearing | Len/Dur  | Turn Direction | Len/Dur | IAS (kt) | NAV PERF |
|----|-------|----------|---------|---------|----------|----------------|---------|----------|----------|
| IF | BEREV | IAF      |         |         |          |                | +3000   | -180     | RNP APCH |
| TF | BP329 | IF       |         | 222.5T  | 3.3NM    | R              | +2300   | -180     | RNP APCH |
| TF | BP331 | FAF      | Y       | 282.5T  | 3.4NM    | R              | +1800   | -165     | RNP APCH |
| TF | RW31R | LTP/FTP  | Y       | 312.4T  | 4.2NM    |                | +466    |          | RNP APCH |
| VA |       |          |         | 312.4T  |          |                | +900    |          | RNP APCH |
| DF | TPS   | TP       |         |         |          | R              | @3000   | -185     | RNP APCH |
| HM | TPS   | MAHF     |         | 250.2T  | 1.00 min | L              | @3000   | -230     | RNP APCH |

via ODVAS

| PT | WP ID | Flx role | OverFly | Bearing | Len/Dur  | Turn Direction | Len/Dur | IAS (kt) | NAV PERF |
|----|-------|----------|---------|---------|----------|----------------|---------|----------|----------|
| IF | ODVAS | IAF      |         |         |          |                | +3000   | -180     | RNP APCH |
| TF | BP328 | IF       |         | 042.5T  | 4.2NM    | L              | +2300   | -180     | RNP APCH |
| TF | BP331 | FAF      | Y       | 342.5T  | 3.4NM    | L              | +1800   | -165     | RNP APCH |
| TF | RW31R | LTP/FTP  | Y       | 312.4T  | 4.2NM    |                | +466    |          | RNP APCH |
| VA |       |          |         | 312.4T  |          |                | +900    |          | RNP APCH |
| DF | TPS   | TP       |         |         |          | R              | @3000   | -185     | RNP APCH |
| HM | TPS   | MAHF     |         | 250.2T  | 1.00 min | L              | @3000   | -230     | RNP APCH |

### WAYPOINT COORDINATES

| WP ID | Latitude     | Longitude     |
|-------|--------------|---------------|
| BEREV | N47 24 14.9  | E019 30 21.2  |
| ODVAS | N47 16 15.0  | E019 19 34.7  |
| BP328 | N47 19 18.7  | E019 23 41.6  |
| BP329 | N47 21 49.1  | E019 27 04.2  |
| BP331 | N47 22 33.1  | E019 22 11.2  |
| RW31R | N47 25 22.62 | E019 17 37.88 |
| TPS   | N47 29 35.7  | E019 26 46.4  |